

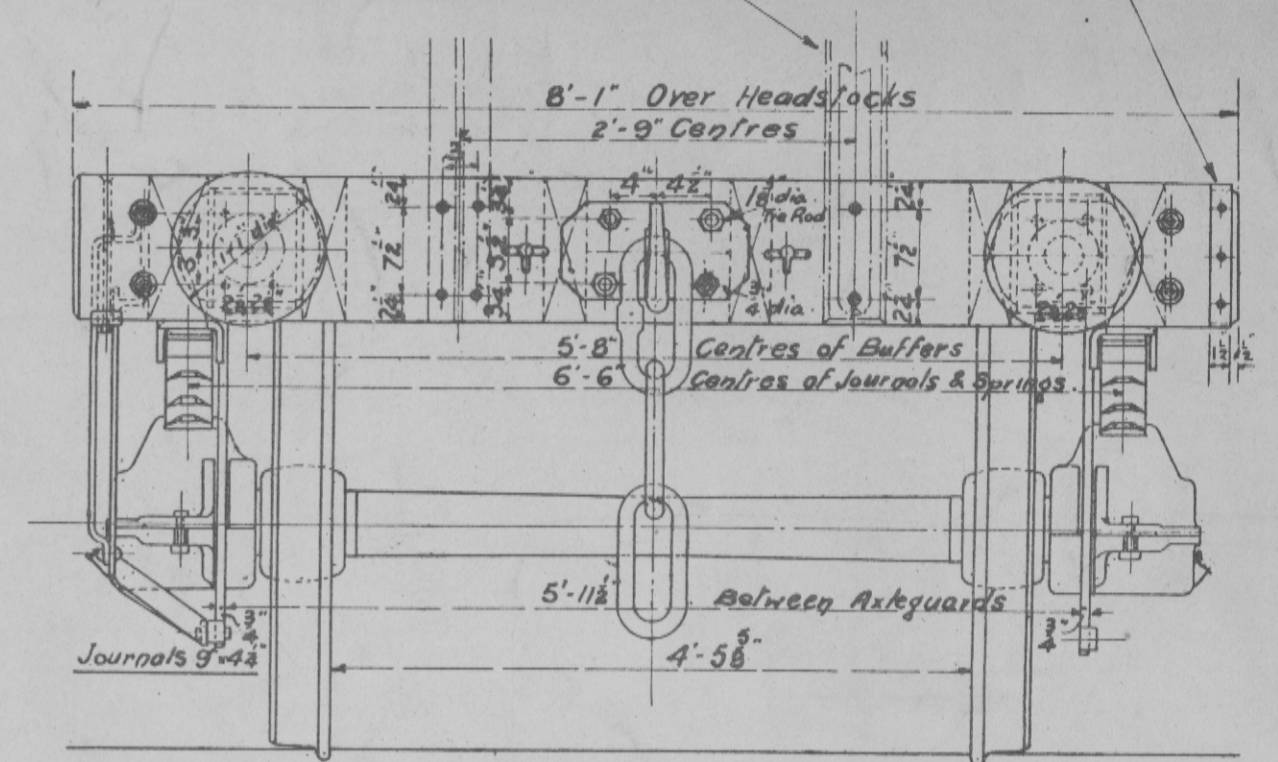
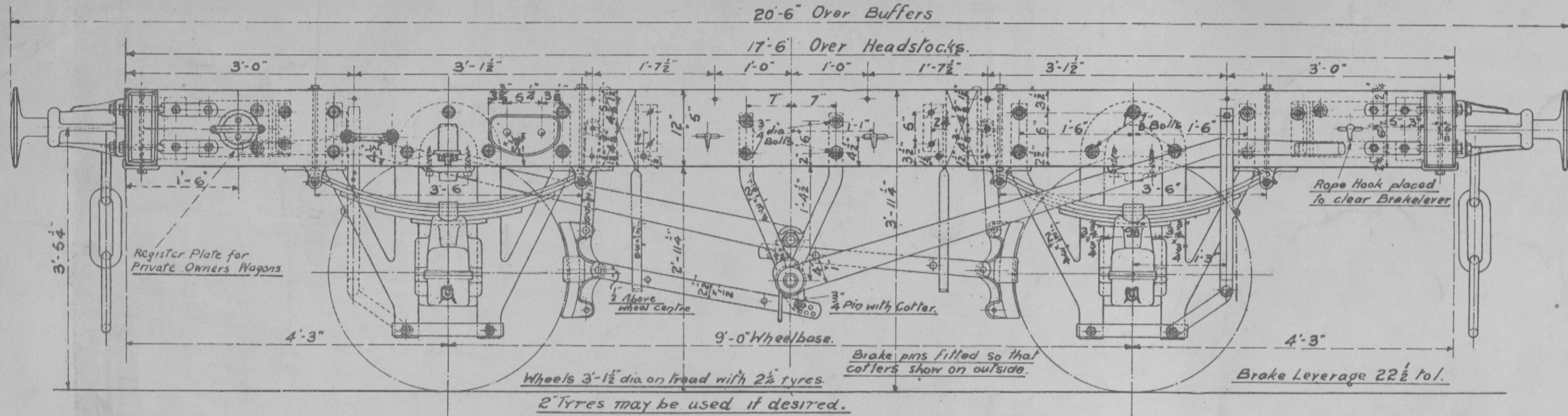
Name & Number Plate, & Label Clip  
To be placed on the left hand side  
of opposite corners.

Holes marked thus  $\phi$  are to take Side Door  
Stop Spring on High Sided Wagons.

The Underframe shows holes for Side & End Stanchions  
& Side Rails & Brackets for High Sided Goods &  
Covered Goods Wagons.

Wood stanchion alternative.

Hoop  $1\frac{1}{2} \times \frac{3}{8}$  alternative  
to bolt & clip.

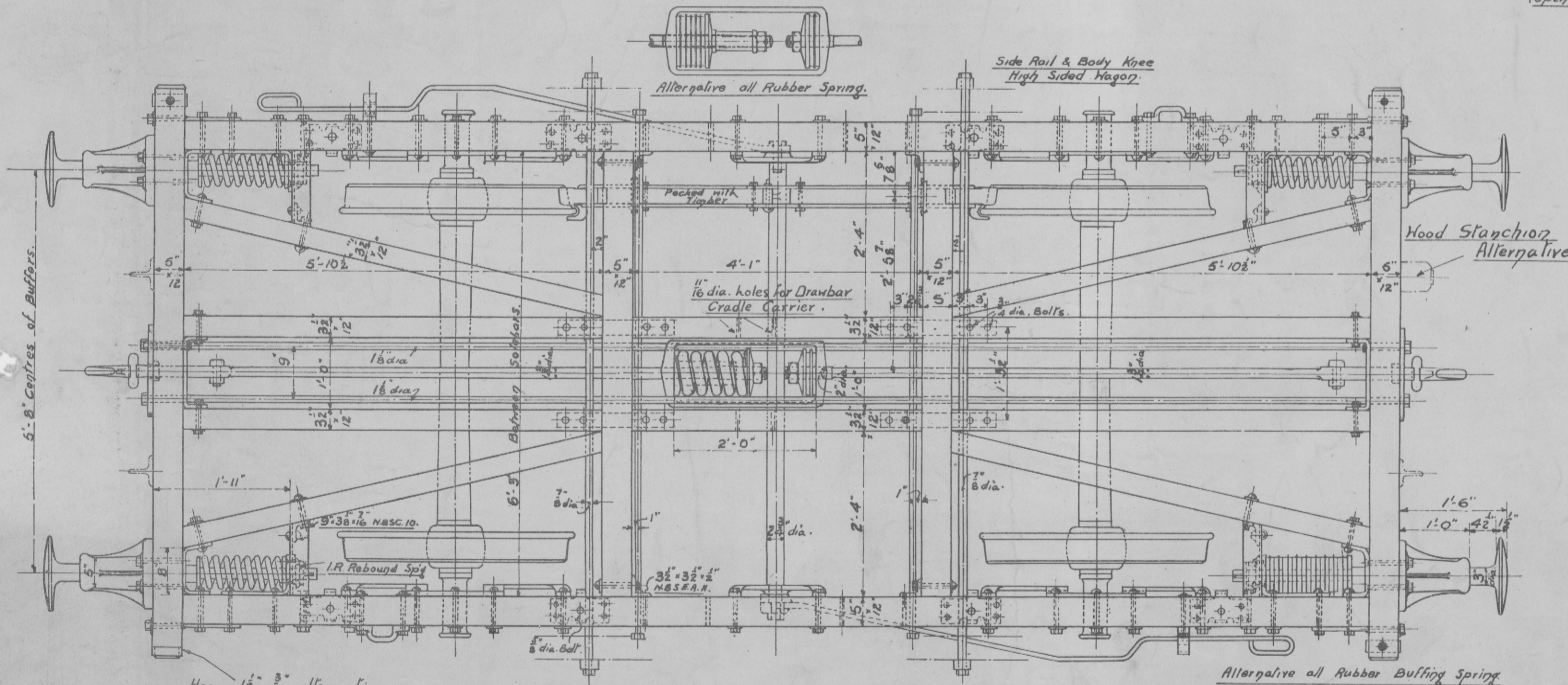


SIDE ELEVATION

END ELEVATION

If preferred Coke Wagons may be fitted with  
Double Brakes instead of the Morlon  
Brake shown hereon.

Buffer Trimmer 9' x 3 1/2" x 1/8" N.B.S.C. 10  
Buffer Trimmer & Solebar Knee 7' x 3 1/2" x 1/2" N.B.S.U.A. 16  
Buffer Trimmer & Diagonal Knee 3 1/2' x 3 1/2" x 1/2" N.B.S.E.A. 11  
(Opened out to suit)



PLAN

ARRANGEMENT OF TIMBER UNDERFRAME FOR  
STANDARD 12 TON RAILWAY WAGON  
ALSO FOR COKE WAGON  
SCALE: - 3/4 IN = 1 FOOT  
APRIL 1923 D.C. No 1000