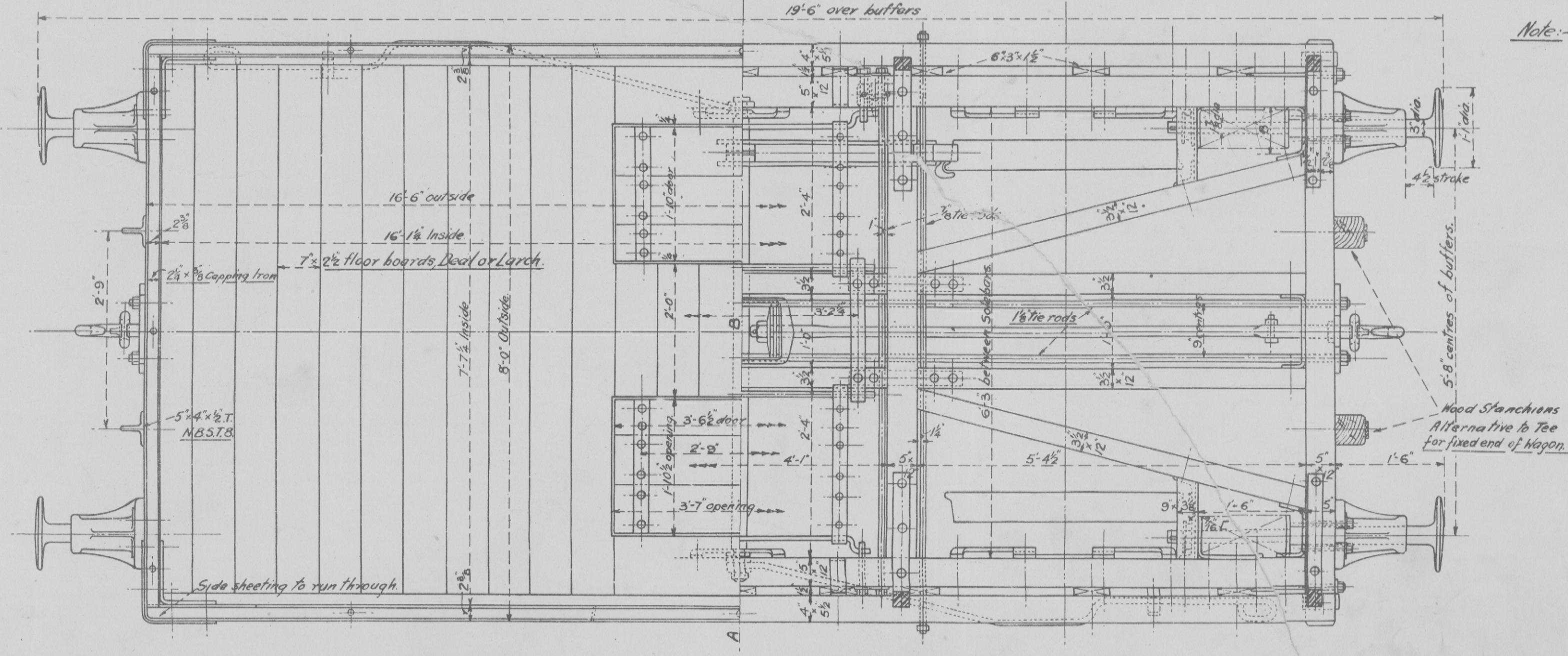


— Side Elevation —

— Longitudinal Section —

Note:— A separate brake on both sides of wagon may be fitted instead of that shown hereon if desired. See drg. N<sup>o</sup> 1003.

— Section on Line A.B. — End Elevation —



— Plan of Body —

— Plan of Underframe —

Note:— Side and End sheeting may be 2 1/8" thick if desired.

Mineral Wagons working to Barry, Cardiff, and Penarth Docks must be fitted with Commode Rods, Buffer Steps and combined pin & tooth Brake Racks.

Types of doors fitted to be at Owners' Option.

STANDARD 12 TON WAGON.  
ARRANGEMENT OF MINERAL WAGON.  
TIMBER UNDERFRAME.  
SCALE: 3/4 IN = 1 FOOT.  
APRIL 1923. D<sup>o</sup> N<sup>o</sup> 1002.