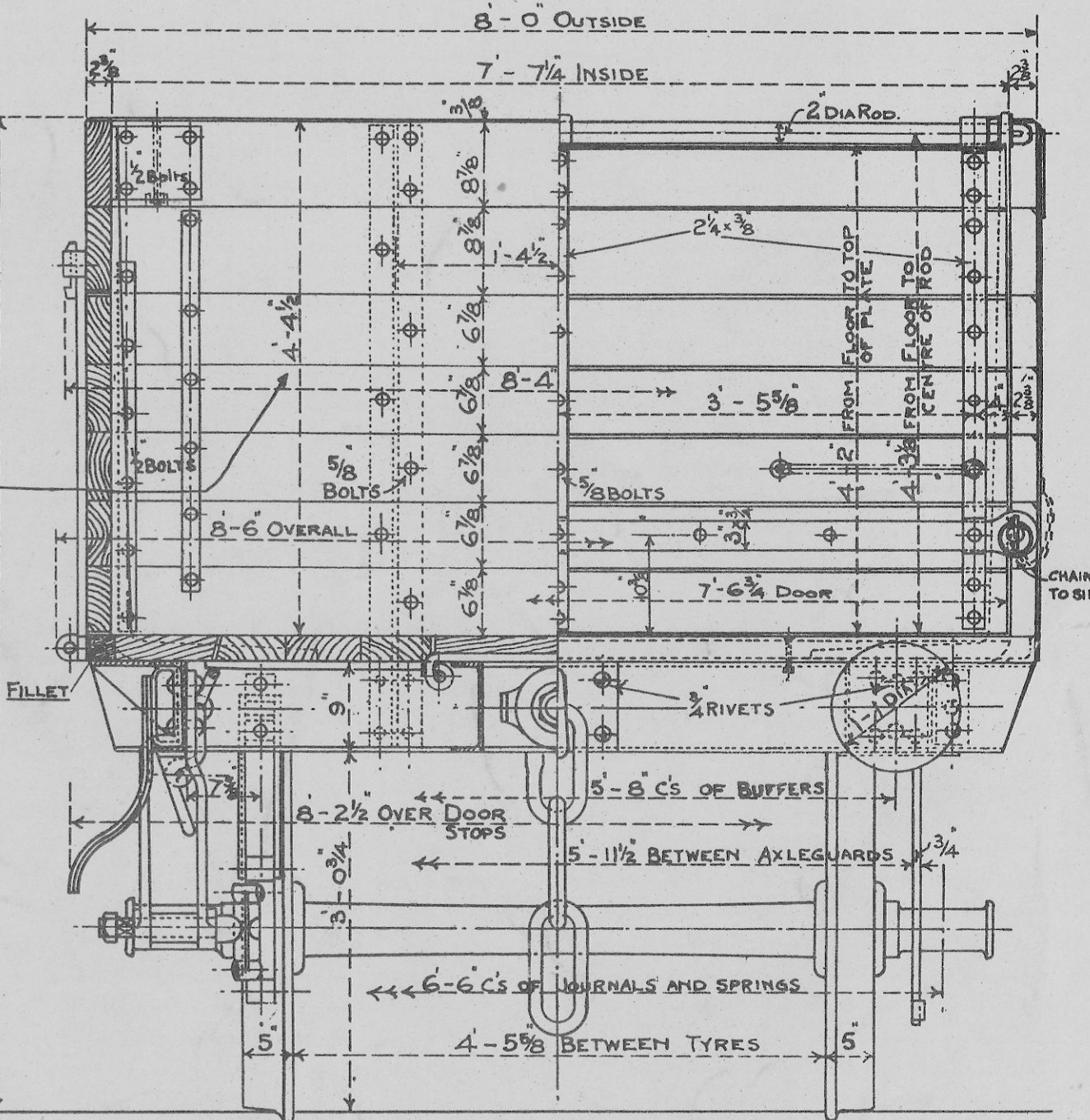


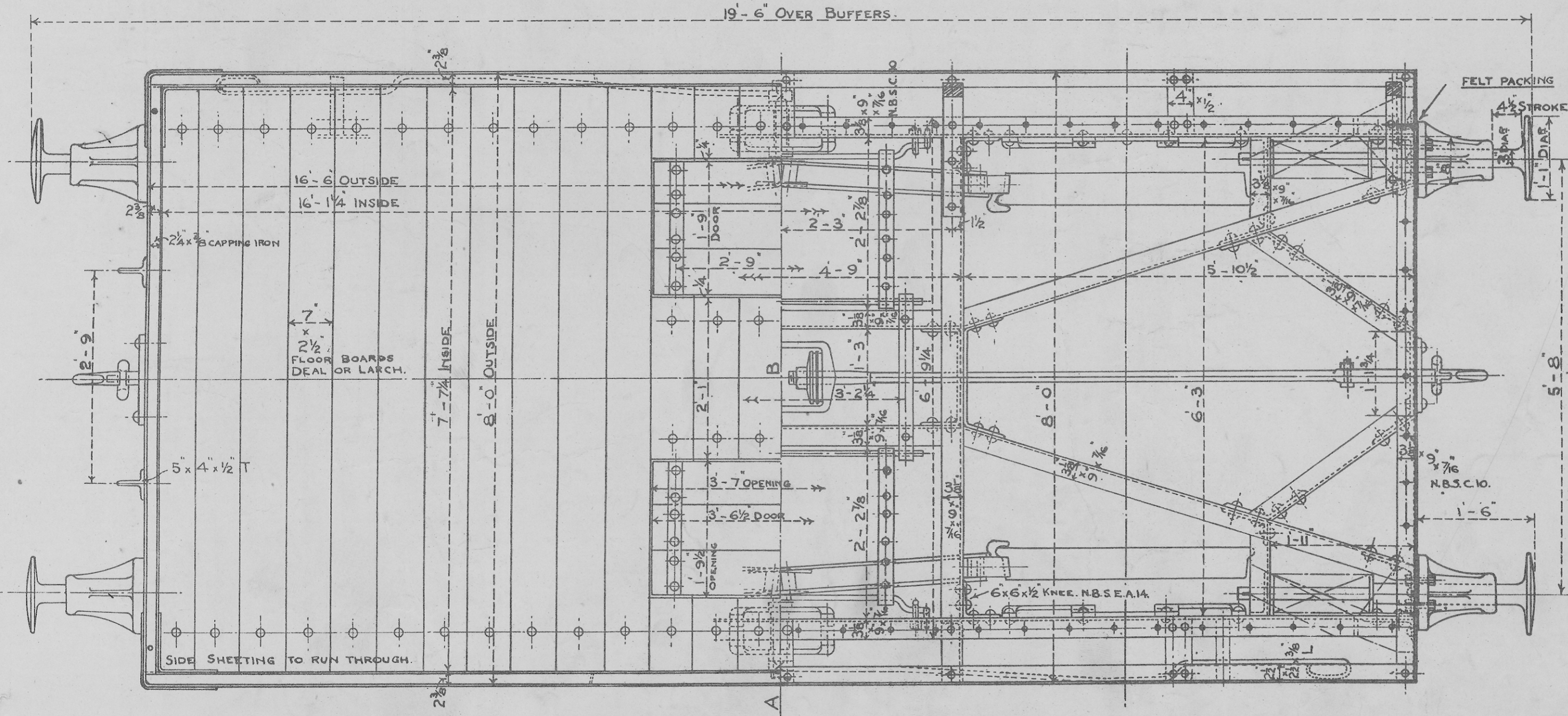
SIDE ELEVATION

LONGITUDINAL SECTION

NOTE: - A SEPARATE BRAKE IS SHOWN ON EACH SIDE HEREOF BUT THE MORTON BRAKE MAY BE FITTED IF PREFERRED. SEE DR 91002.



SECTION ON LINE A.B. END ELEVATION



PLAN OF BODY

PLAN OF UNDERFRAME

NOTE: - SIDE AND END SHEETING MAY BE  $2\frac{3}{8}$ " THICK IF DESIRED.

MINERAL WAGONS WORKING TO BARRY, CARDIFF, AND PENARTH DOCKS, MUST BE FITTED WITH COMMODE RODS, BUFFER STEPS AND COMBINED PIN & TOOTH BRAKE RACKS.

TYPES OF DOORS TO BE FITTED AT OWNERS OPTION.

STANDARD 12 TON WAGON.  
ARRANGEMENT OF MINERAL WAGON.  
METAL UNDERFRAME.  
SCALE: -  $\frac{3}{4}$  IN = 1 FOOT.  
APRIL 1923. D<sub>5</sub> N<sub>0</sub> 1003.