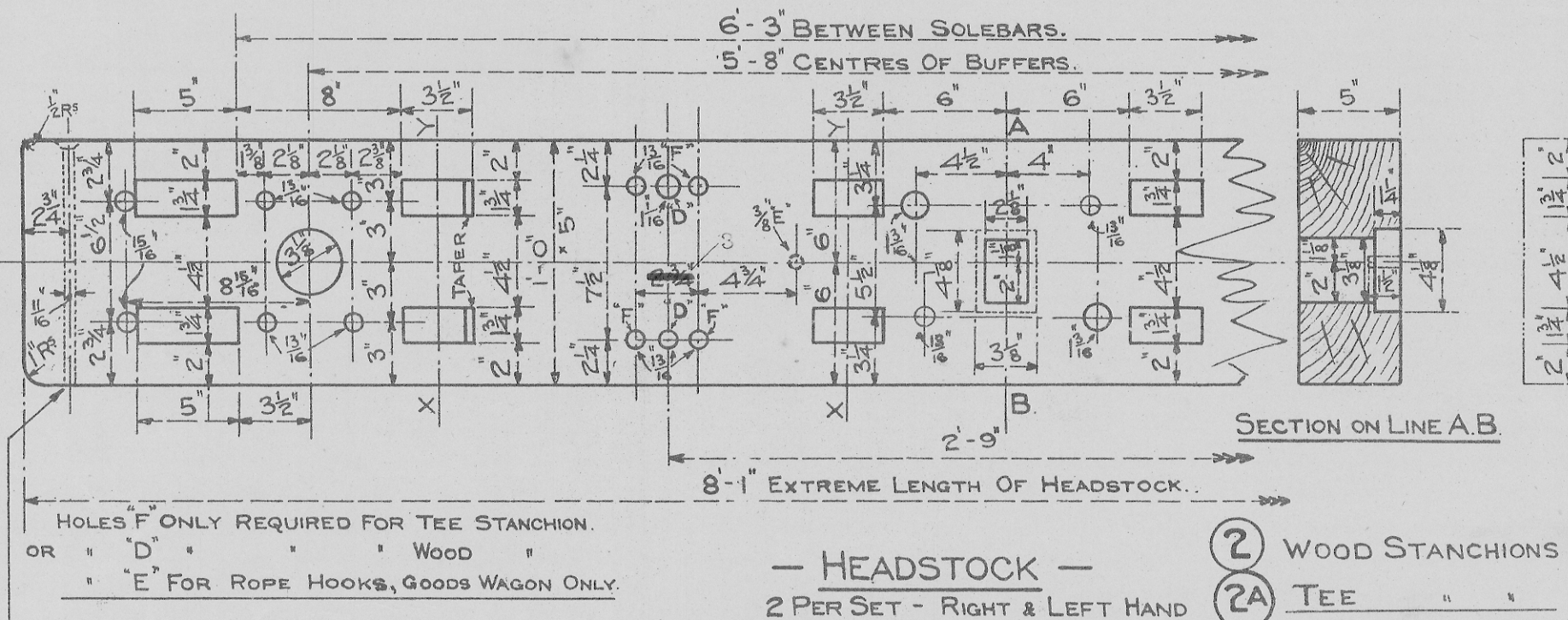
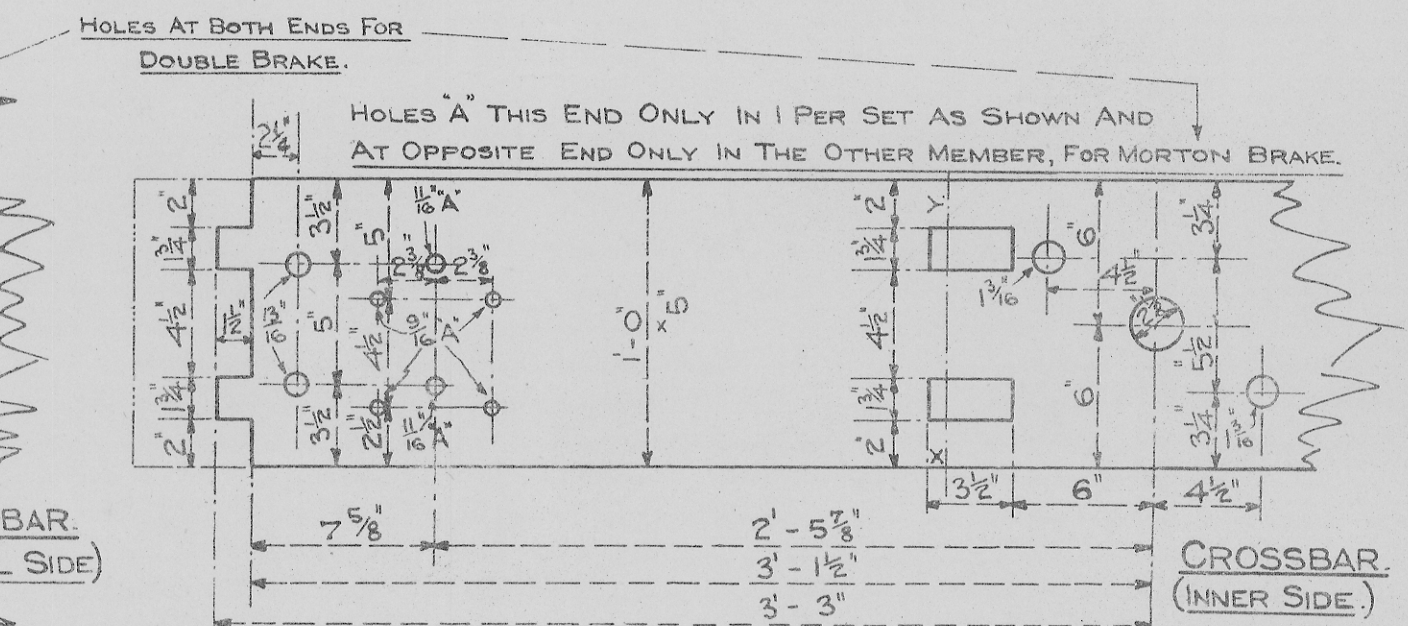
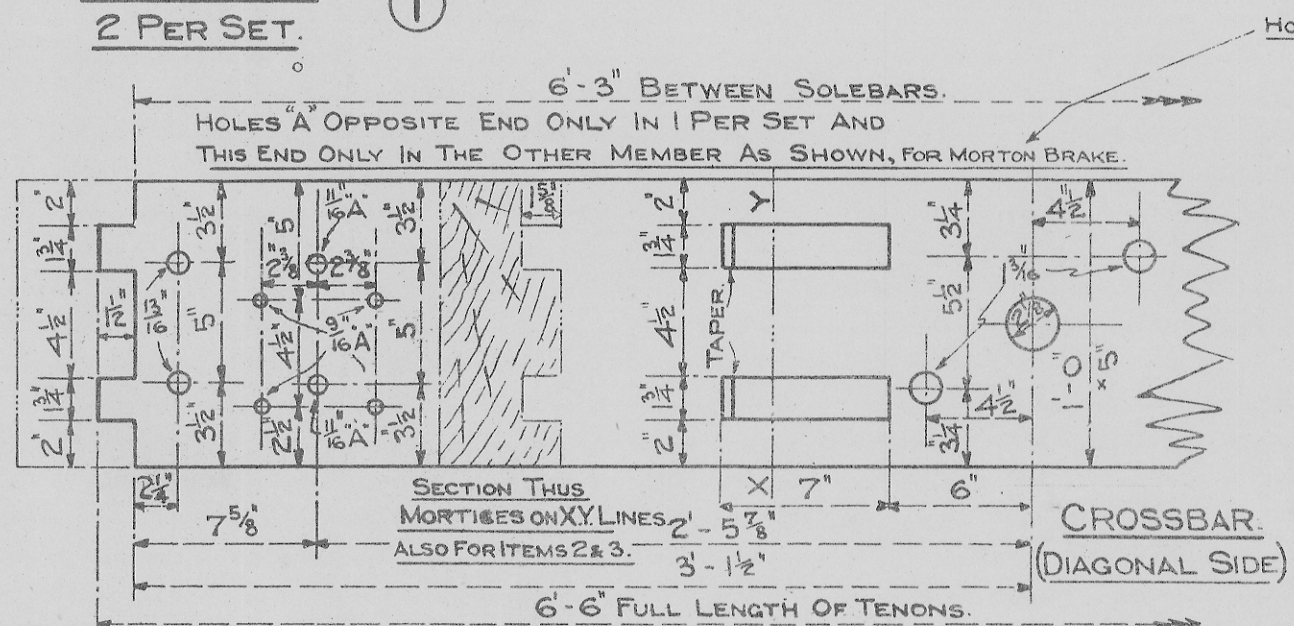


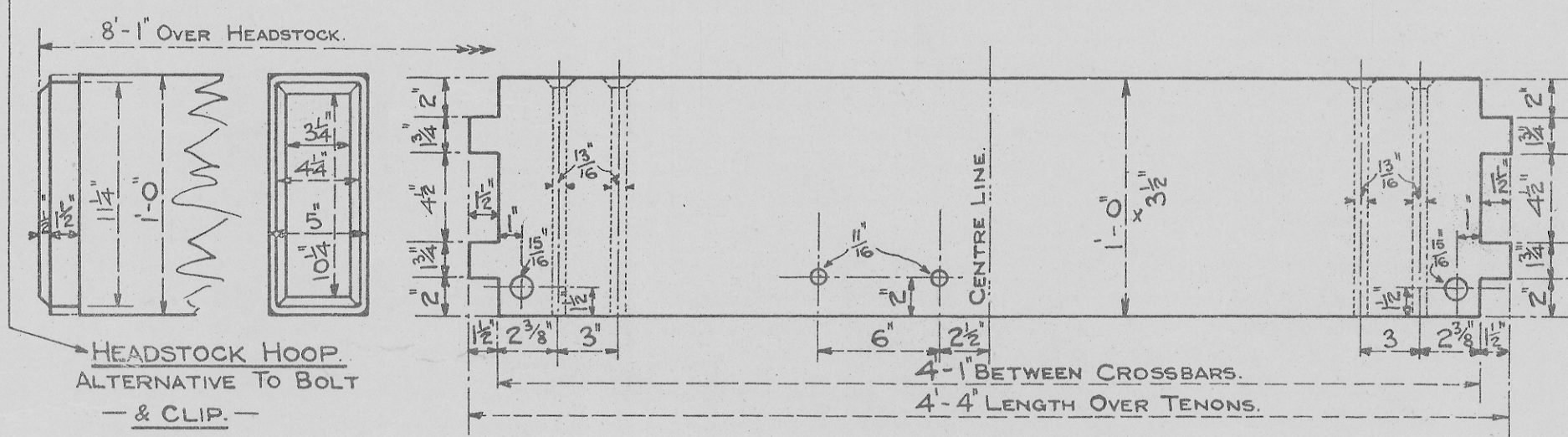
- SOLEBAR -
2 PER SET. (1)



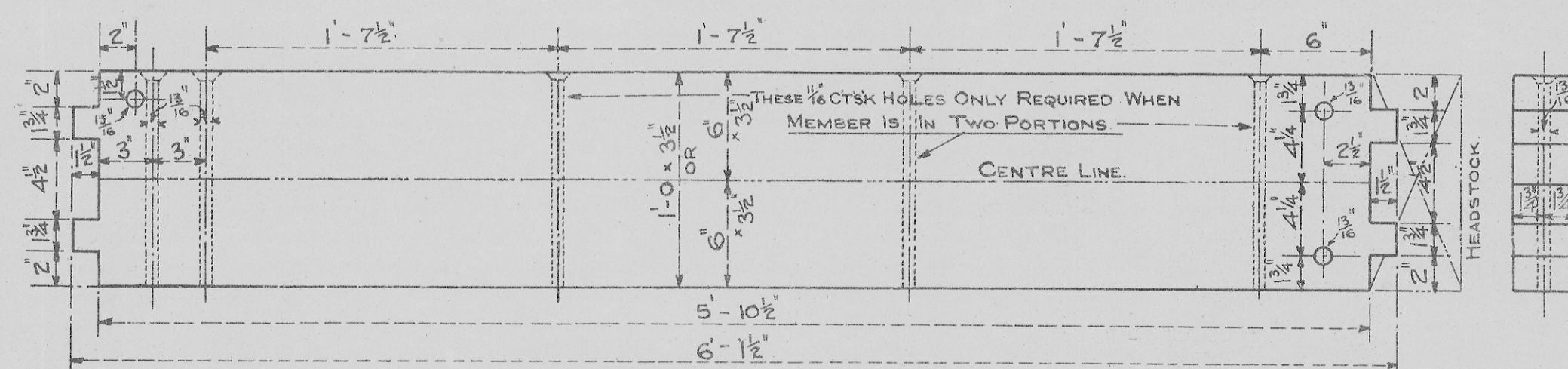
- HEADSTOCK -
2 PER SET - RIGHT & LEFT HAND (2)



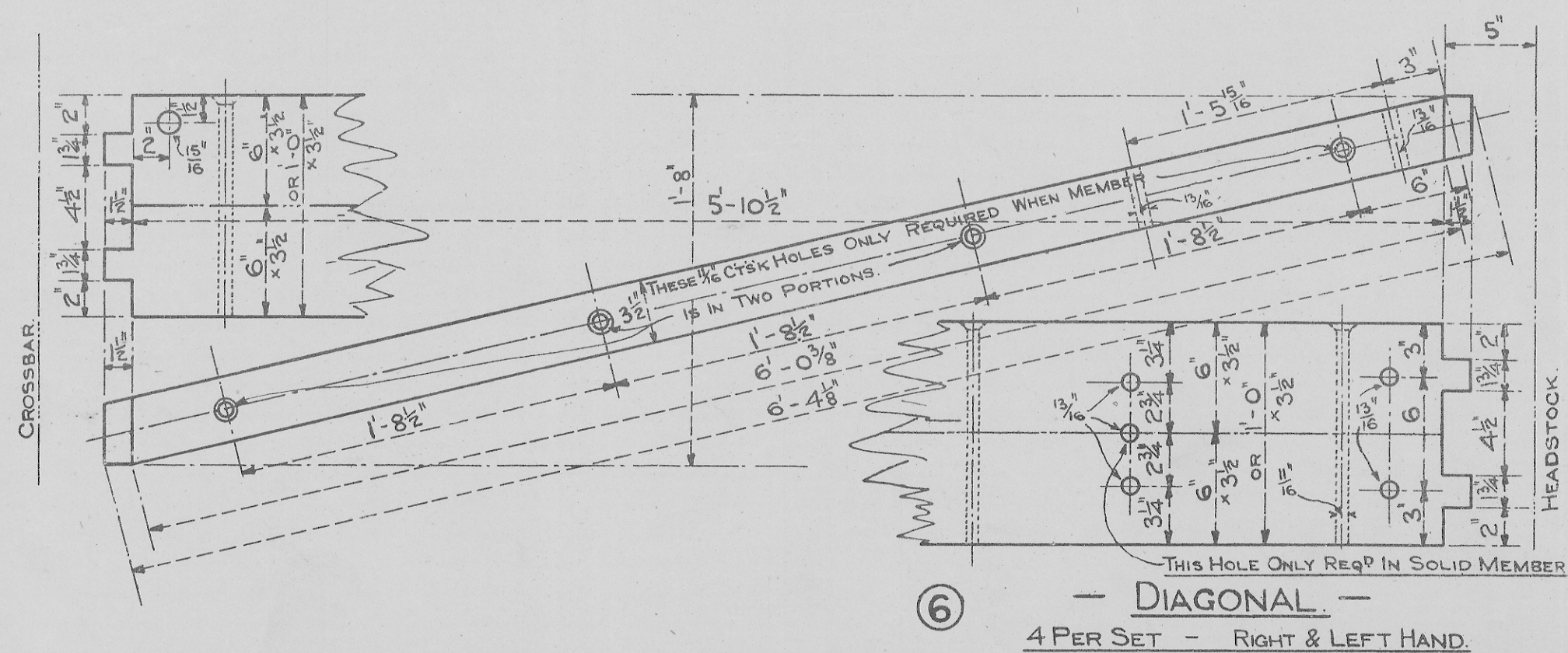
- CROSSBAR -
2 PER SET - RIGHT & LEFT HAND (3)



(4) - CENTRE LONGITUDINAL -
2 PER SET.



(5) - END LONGITUDINAL -
4 PER SET.



(6) - DIAGONAL -
4 PER SET - RIGHT & LEFT HAND.

STANDARD 12 TON WAGON.
TIMBER UNDERFRAME MEMBERS.
GOODS AND COKE WAGONS.
SCALE: - 1/2 IN = 1 FOOT.
APRIL 1923. DC NO 1004.