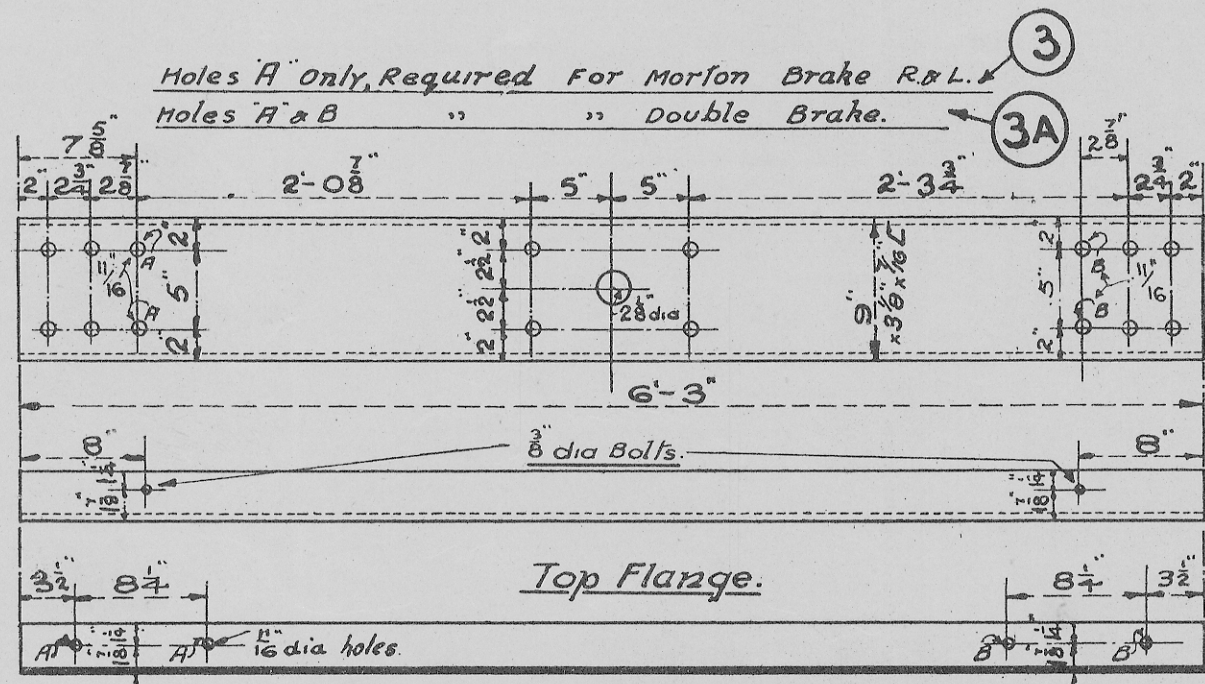
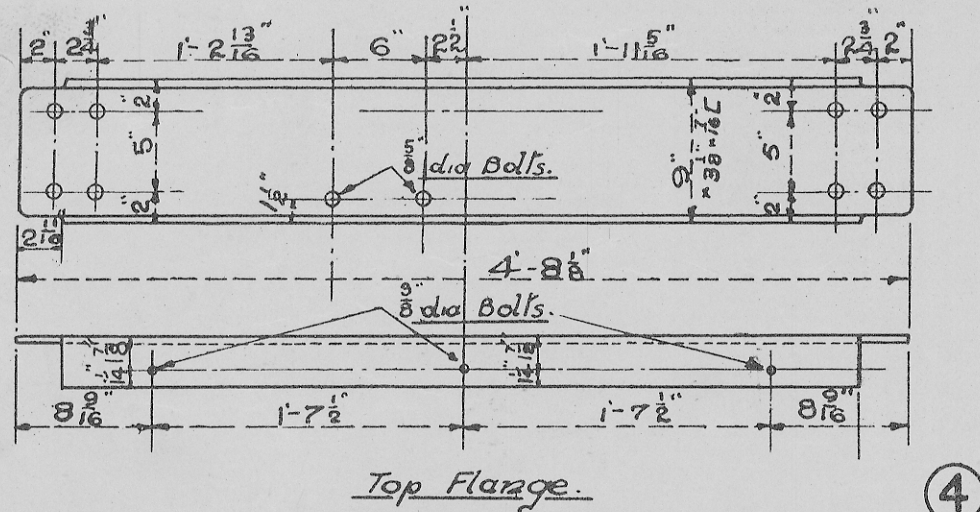


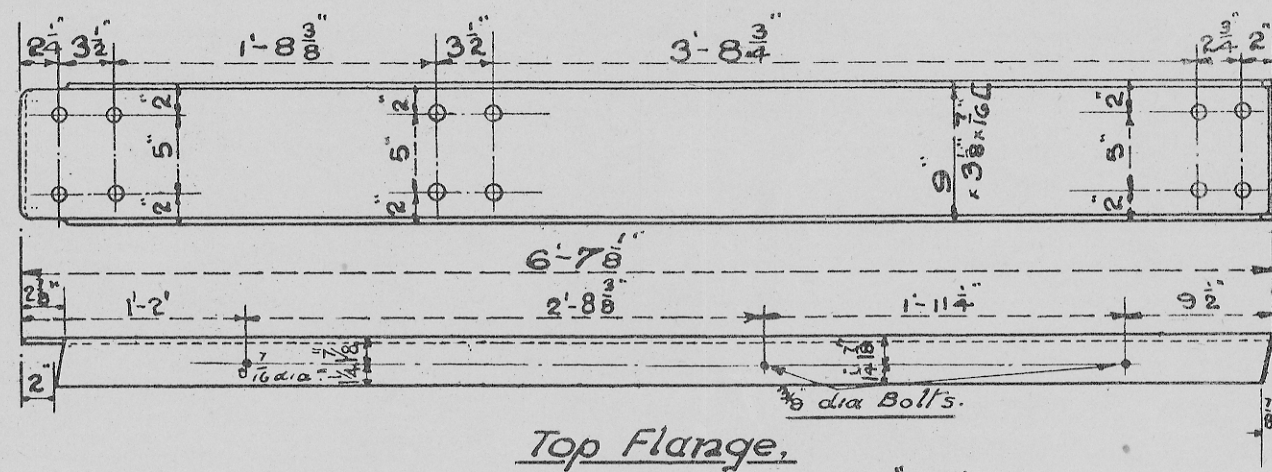
**SOLEBAR** 9 x 3 3/8 x 1/16 C.  
2 Per Set. N.B.S.C.10.



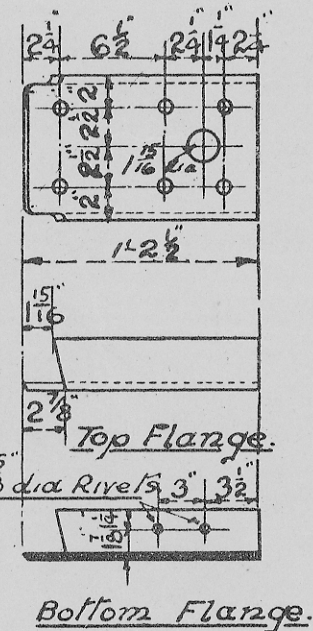
**CROSSBAR.** 9 x 3 3/8 x 1/16 C.  
2 Per Set. N.B.S.C.10.



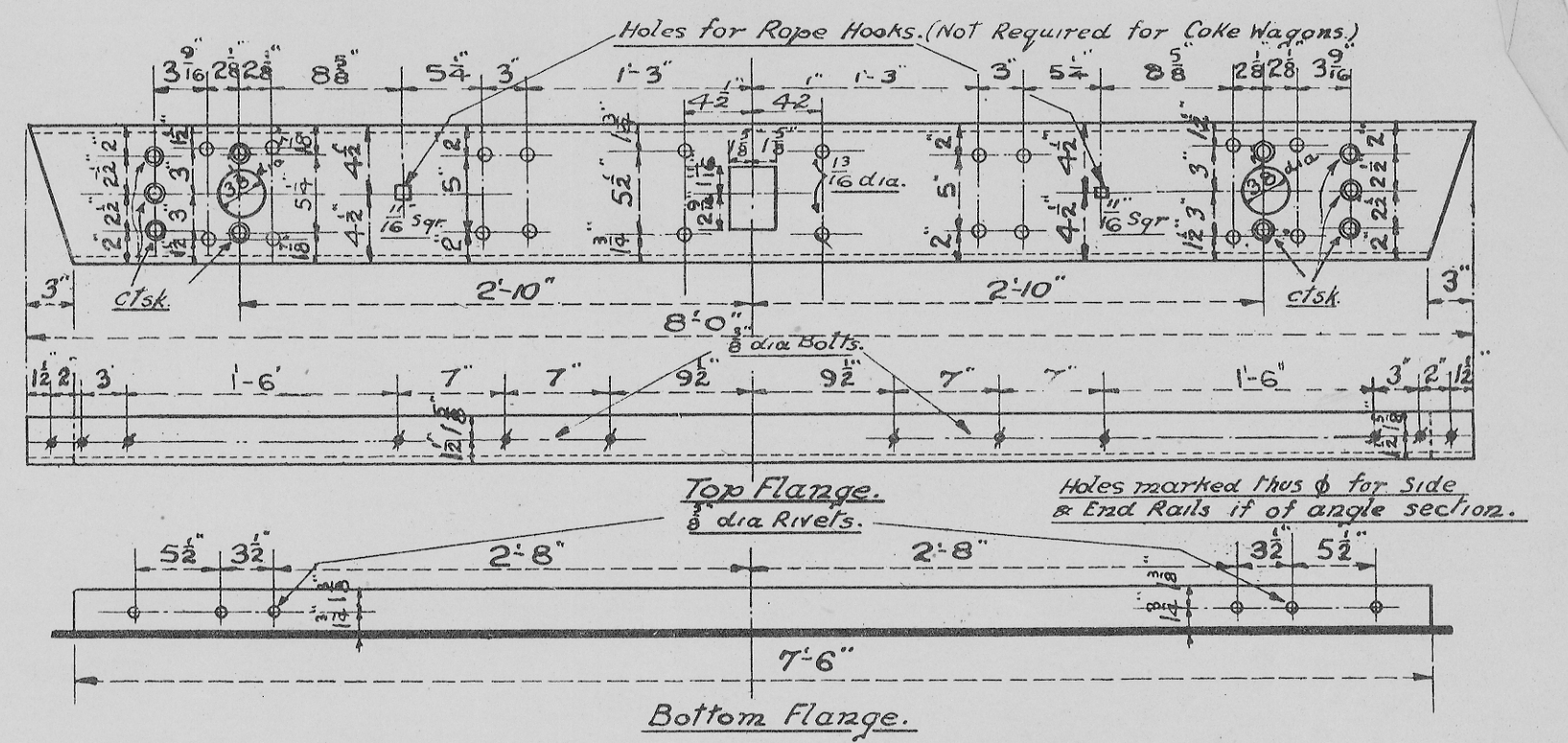
**LONGITUDINAL.** 9 x 3 3/8 x 1/16 C.  
2 Per Set R&L. N.B.S.C.10.



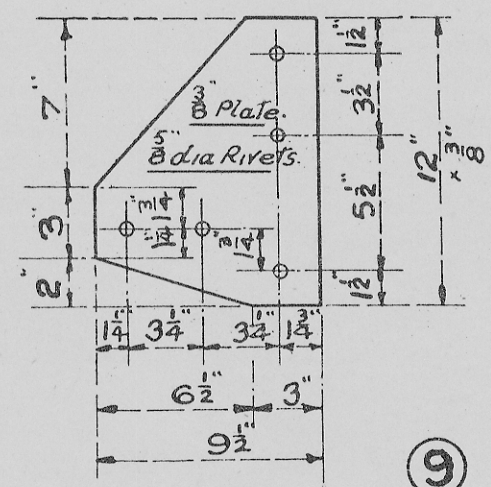
**DIAGONAL.** 9 x 3 3/8 x 1/16 C.  
4 Per Set. R&L. N.B.S.C.10.



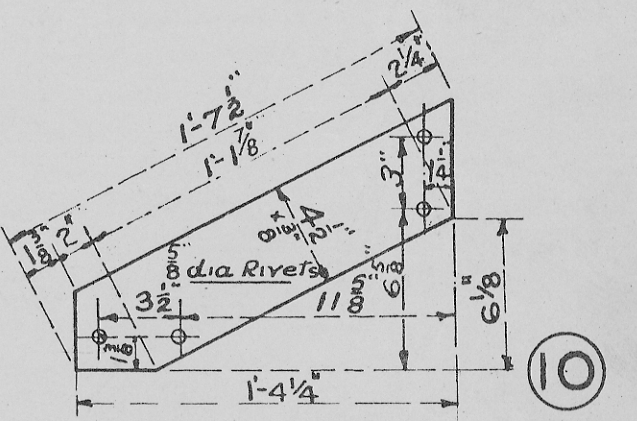
**BUFFER TRIMMER.** 9 x 3 3/8 x 1/16 C.  
4 Per Set. R&L. N.B.S.C.10.



**HEADSTOCK.** 9 x 3 3/8 x 1/16 C.  
2 Per Set. N.B.S.C.10.



4 Per Set.



4 Per Set.

STANDARD 12 TON WAGON  
METAL UNDERFRAME MEMBERS  
COODS & COKE WAGONS  
SCALE: - 1 & 1/2 IN = 1 FOOT  
APRIL 1923 DC N° 1005.

The Channels, Angles, Plates & Bars are to be made of Wt. Grade B.E.S. Spec<sup>2</sup> N° 51 or Steel B.E.S. Report 24 Spec<sup>2</sup> N° 18 A.

All holes in the flanges of Members must be marked off from the back of the bar & not from the edge of the flange.

All holes for 3/4 dia Rivets except where otherwise stated.