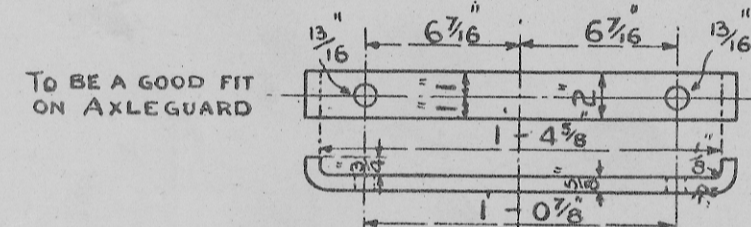
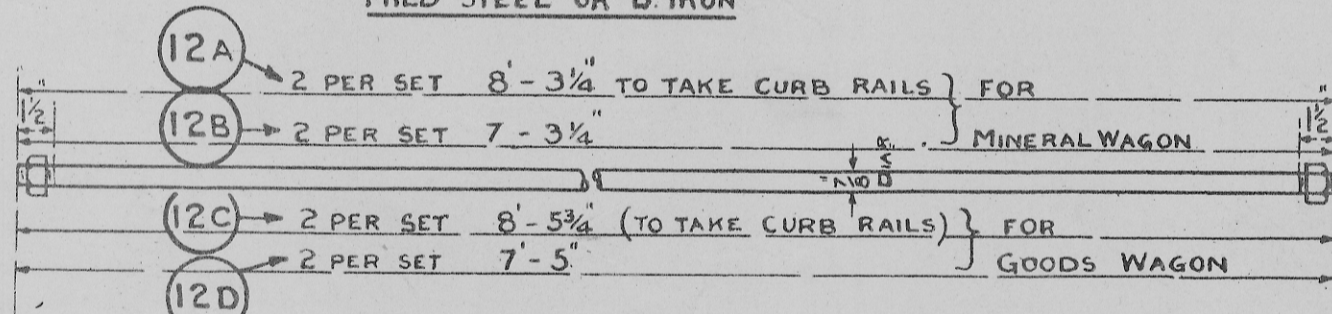


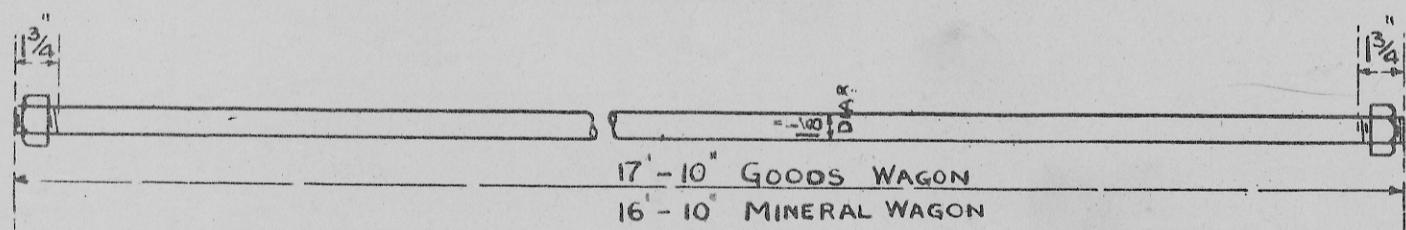
AXLEGUARD (1)
4 PER SET
B IRON



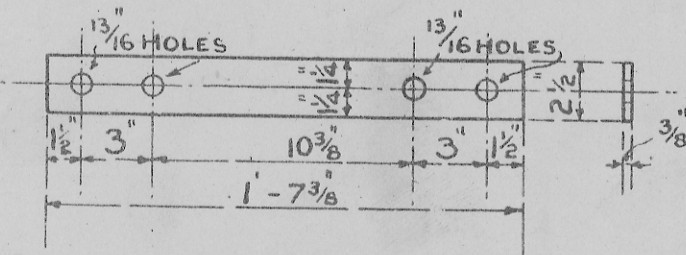
AXLEGUARD STAY (2)
4 PER SET
MILD STEEL OR B IRON



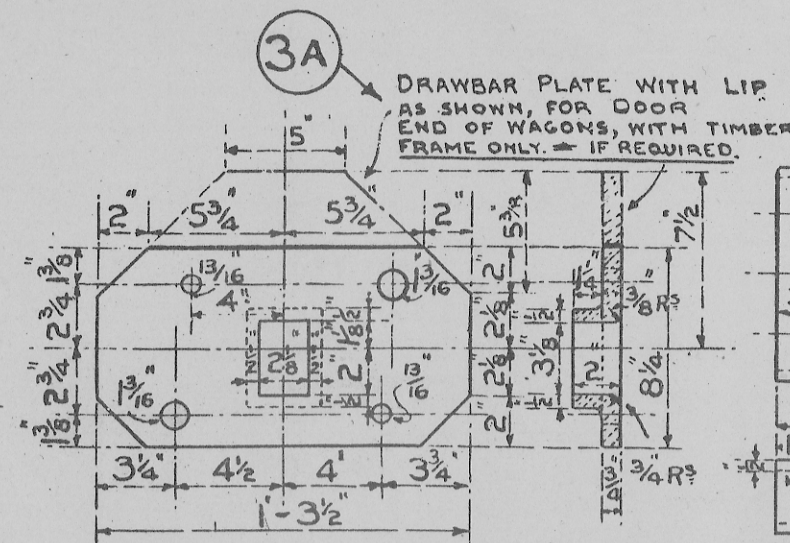
CROSS TIE ROD
MILD STEEL OR B IRON



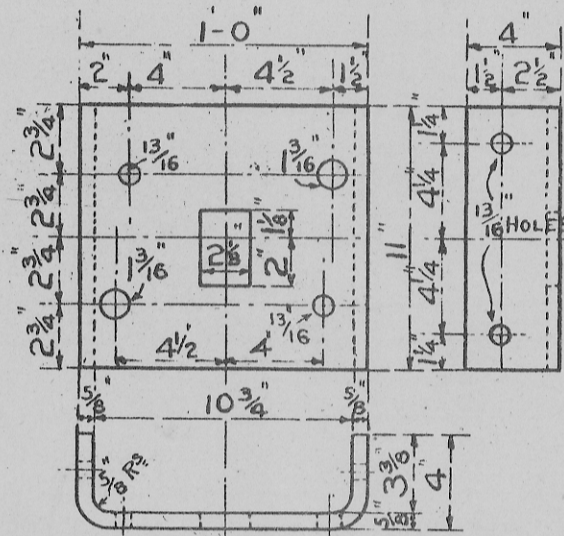
LONGITUDINAL TIE ROD (13)
2 PER SET
MILD STEEL OR B IRON
GOODS
13A MINERAL



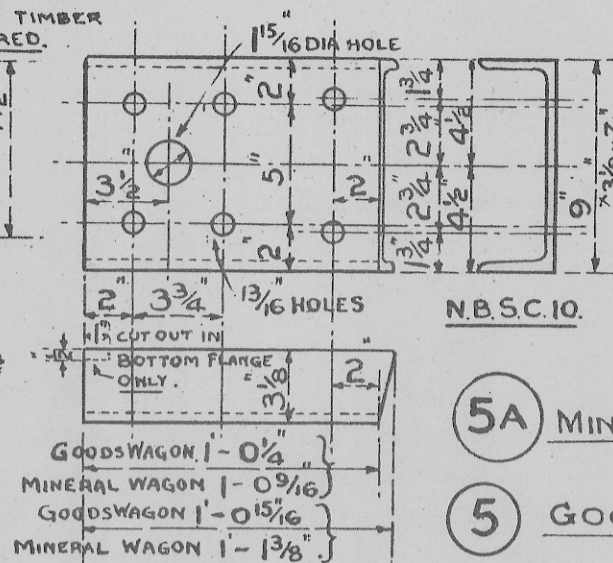
LONGITUDINAL WASHER PLATE (15)
4 PER SET
MILD STEEL OR B IRON



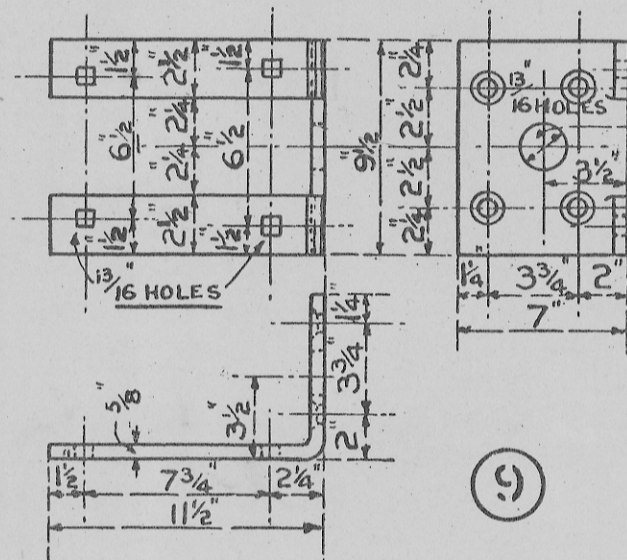
DRAWBAR FRONT PLATE (3)
2 PER SET RIGHT AND LEFT HAND
MILD STEEL OR B IRON



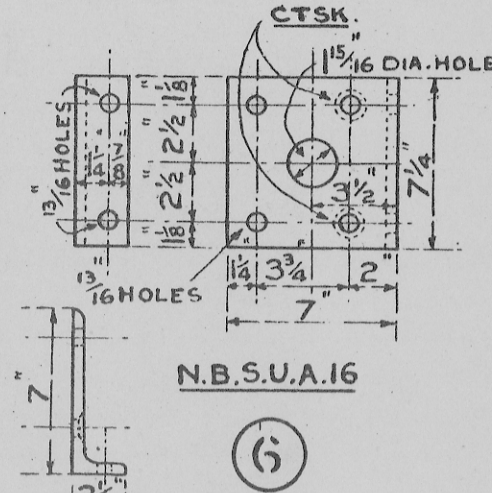
HEADSTOCK & LONGITUDINAL KNEE (4)
2 PER SET RIGHT AND LEFT HAND
MILD STEEL OR B IRON



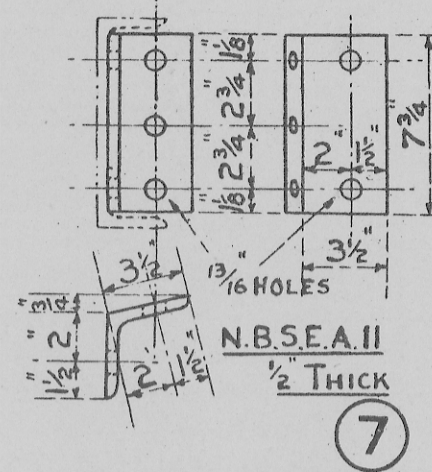
BUFFER TRIMMER (5)
4 PER SET
MILD STEEL OR B IRON
RIGHT AND LEFT HAND



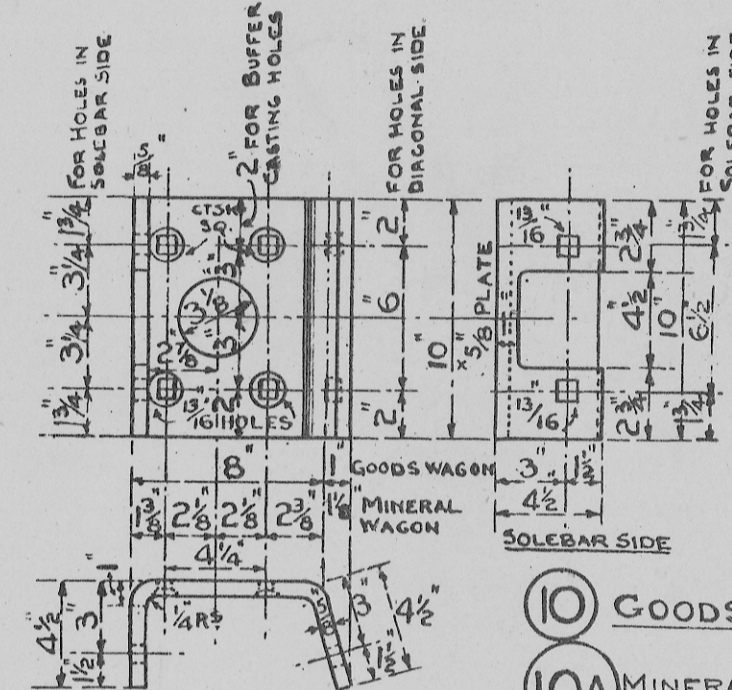
SOLEBAR & BUFFER TRIMMER KNEE (9)
4 PER SET
MILD STEEL OR B IRON



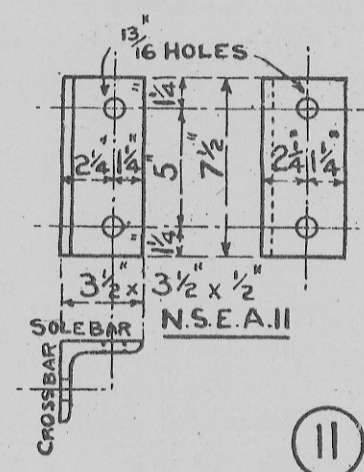
BUFFER TRIMMER & SOLEBAR KNEE (6)
4 PER SET
MILD STEEL OR B IRON



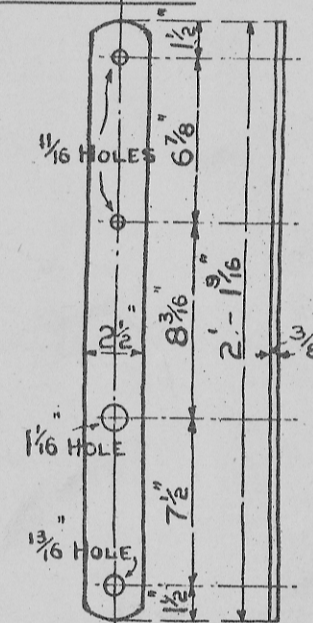
BUFFER TRIMMER & DIAGONAL KNEE (7)
4 PER SET
MILD STEEL OR B IRON



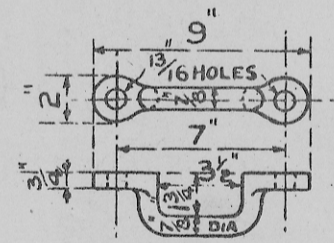
HEADSTOCK, SOLE & DIAGONAL KNEE (10)
4 PER SET
MILD STEEL OR B IRON
GOODS
10A MINERAL



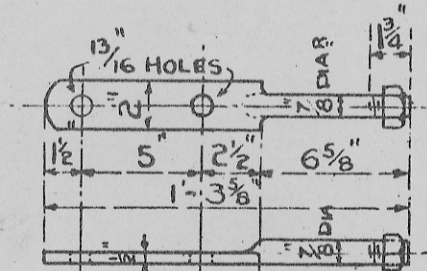
SOLEBAR AND CROSSBAR KNEE (11)
4 PER SET
MILD STEEL OR B IRON
GOODS WAGON ONLY



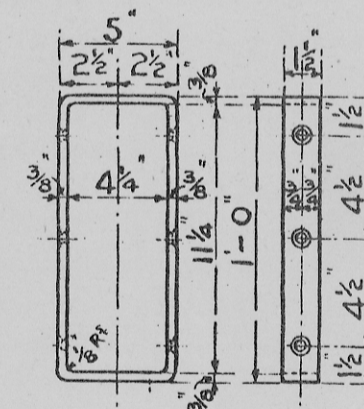
WASHER PLATE FOR END STANCHIONS ONLY (22)
2 PER SET
MILD STEEL OR B IRON



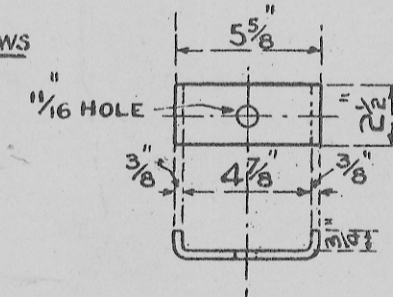
HORSE HOOK (14)
2 PER SET
MILD STEEL OR B IRON



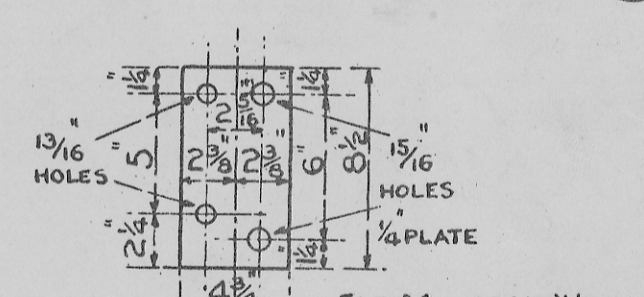
STRAPBOLT (15)
8 PER SET
MILD STEEL



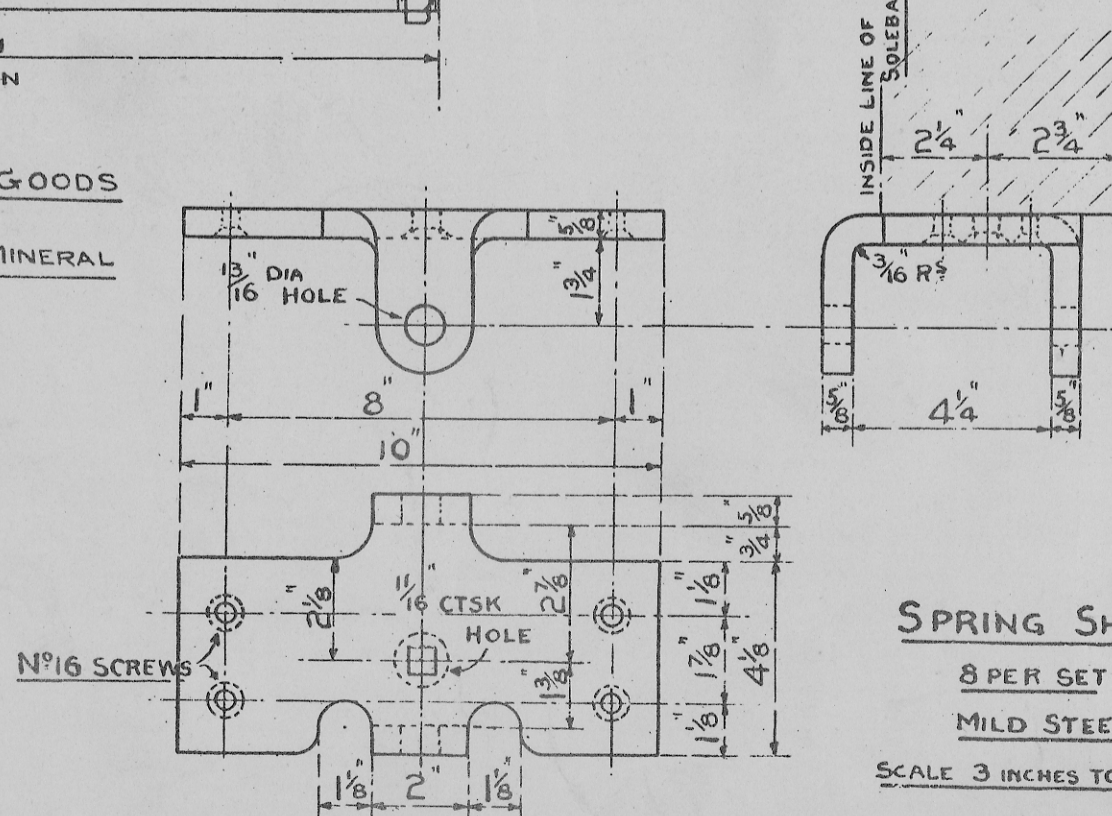
HEADSTOCK HOOP (16)
4 PER SET
MILD STEEL OR B IRON



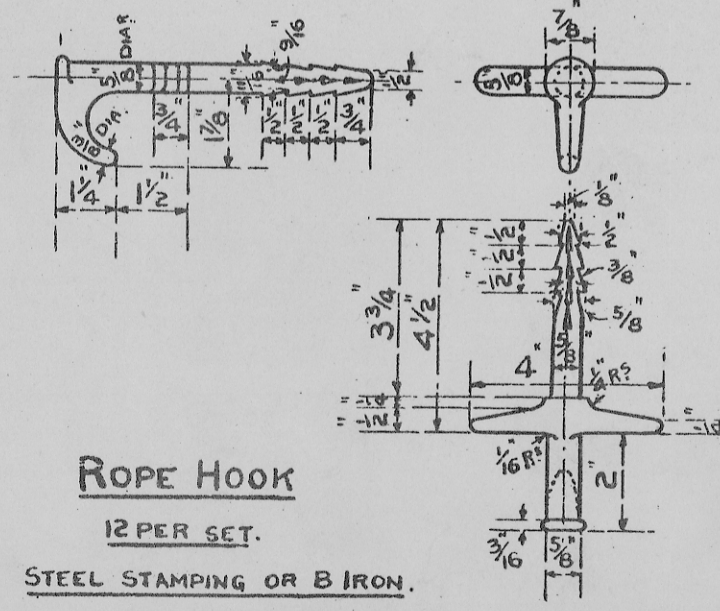
HEADSTOCK CLIP (17)
4 PER SET
MILD STEEL OR B IRON



WASHER PLATE TO TRIMMER KNEE & AXLEGUARD (21)
4 PER SET
MILD STEEL OR B IRON



SPRING SHOE (19)
8 PER SET
MILD STEEL
SCALE 3 INCHES TO 1 FOOT.



ROPE HOOK (20)
12 PER SET.
STEEL STAMPING OR B IRON.
SCALE 3 INCHES TO 1 FOOT.
FOR GOODS WAGON ONLY.

STANDARD 12 TON WAGON.
FRAMING IRONWORK TIMBER UNDERFRAME.
GOODS AND MINERAL WAGON.

SCALE: - 1/2 & 3 INS = 1 FOOT.
APRIL 1923. D⁹ N^o 10 06.