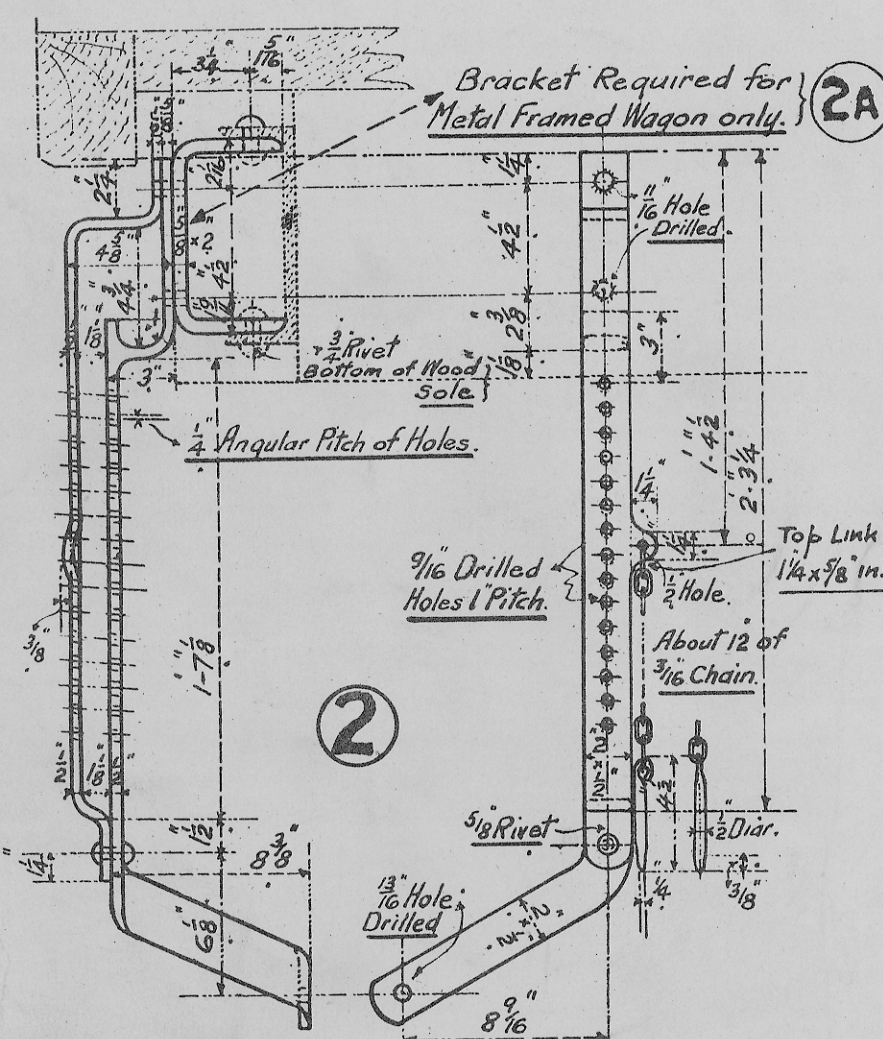
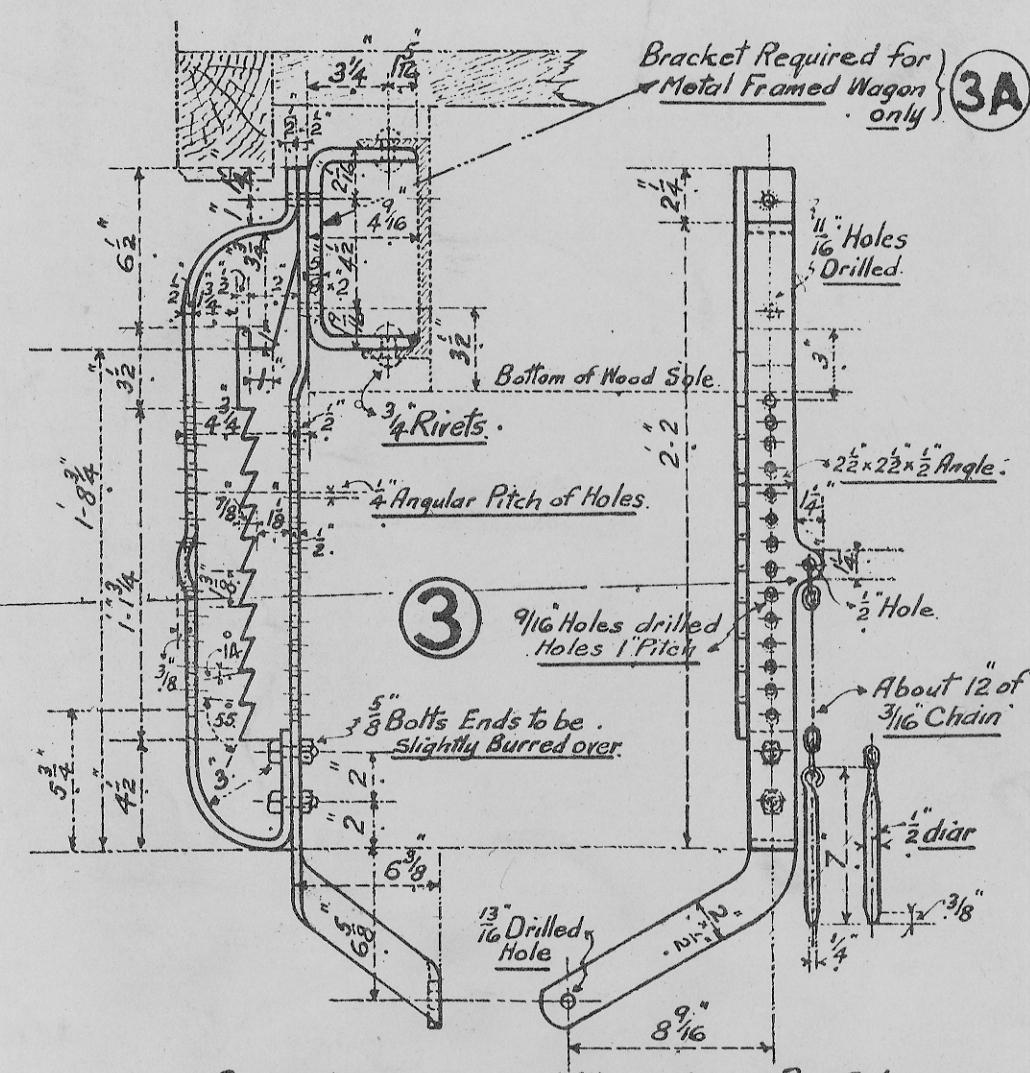


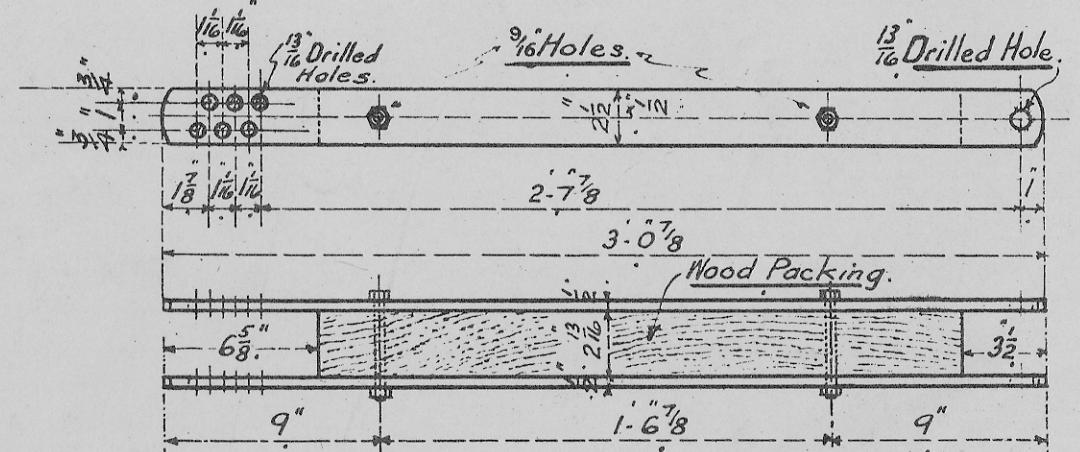
**1** — Vee Hanger Grade B Iron or Mild Steel.  
**1A** — 1 Per Set A for Morton Brake to pair with Hanger D<sup>3</sup> 1002 1/4 or 1A.  
**1B** — 2 Per Set B " Double " " Hangers D<sup>3</sup> 1009 1/6 Metal Frame.  
**1C** — 2 Per Set A " " Timber Frame only.  
**1D** — 2 Per Set B " " "



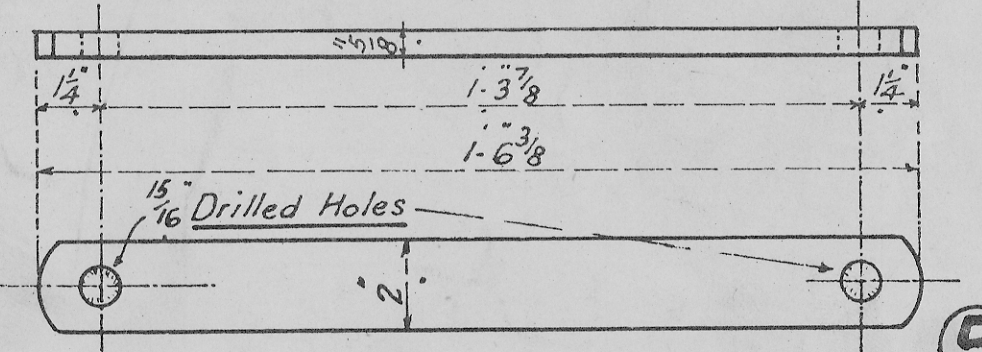
**2** — Brake Lever Guard. 2 Per Set.  
 Grade B Iron or Mild Steel.



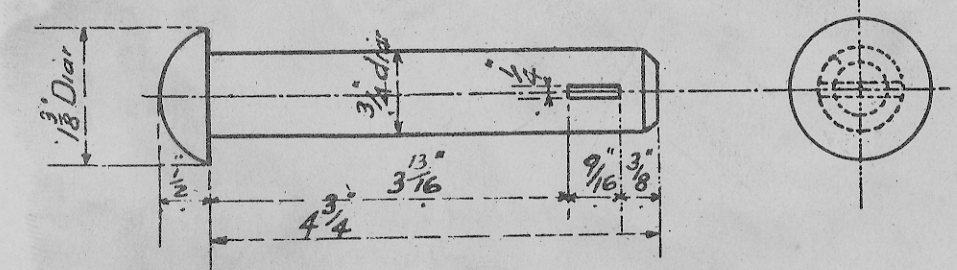
**3** — Brake Lever Guard. (Alternative) 2 Per Set.  
 Grade B Iron or Mild Steel.  
 Mineral Wagons working to Barry, Cardiff, and Penarth Docks must be fitted with Combined Pin and Tooth Brake Racks.



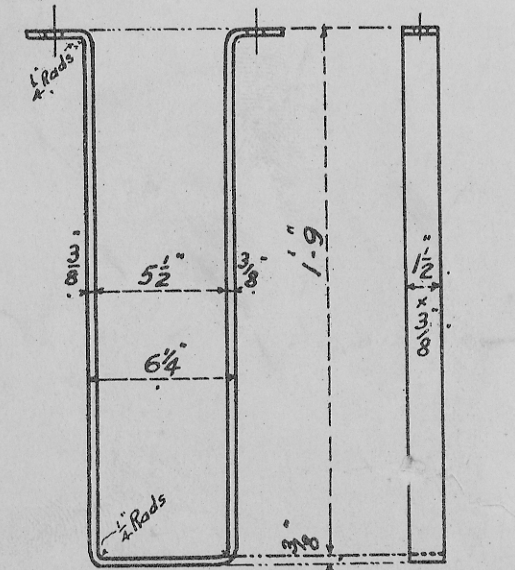
**4** — Push Rod. Grade B Iron or Mild Steel.  
 4 Per Set Double Brake.  
 2 " " Morton "



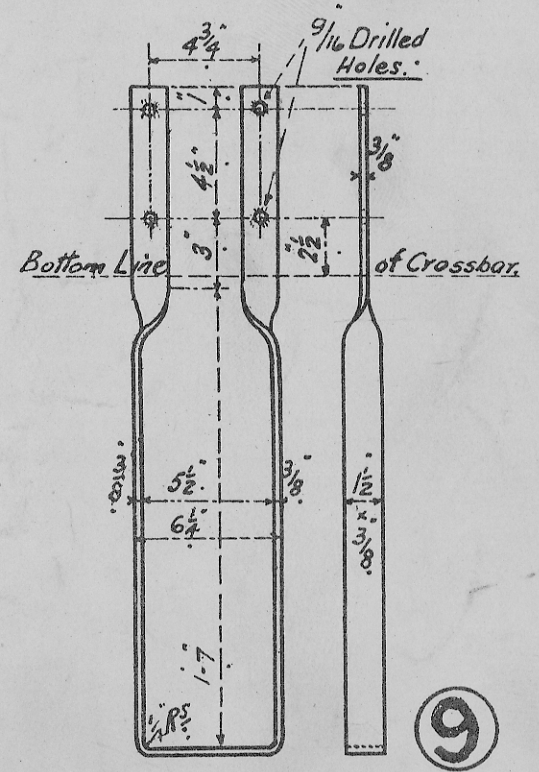
**5** — Block Hanger. Grade B Iron or Mild Steel.  
 4 Per Set Morton Brake.  
 8 " " Double " Scale 3" = 1 Foot.



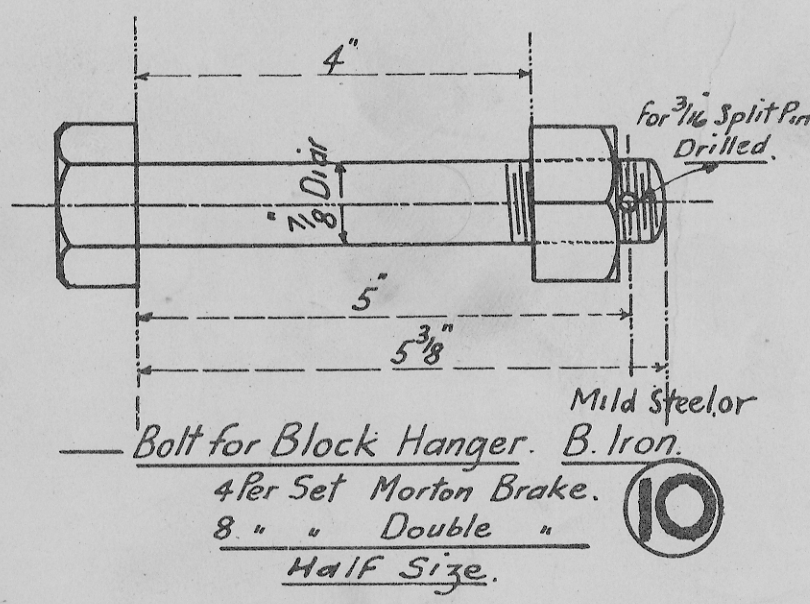
**6** — Push Rod Pins.  
 Half Size. — Grade B Iron or Mild Steel.  
 4 Per Set Morton Brake.  
 8 " " Double "



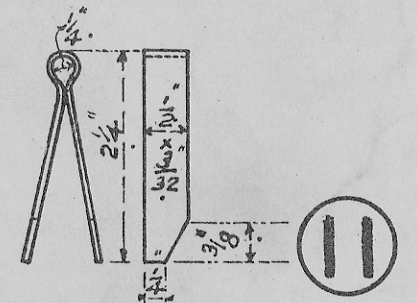
**8** — Safety Hanger. 4 Per Set Double Brake.  
 2 Per Set. Morton.  
 Grade B Iron or Mild Steel.  
 Metal Frame.



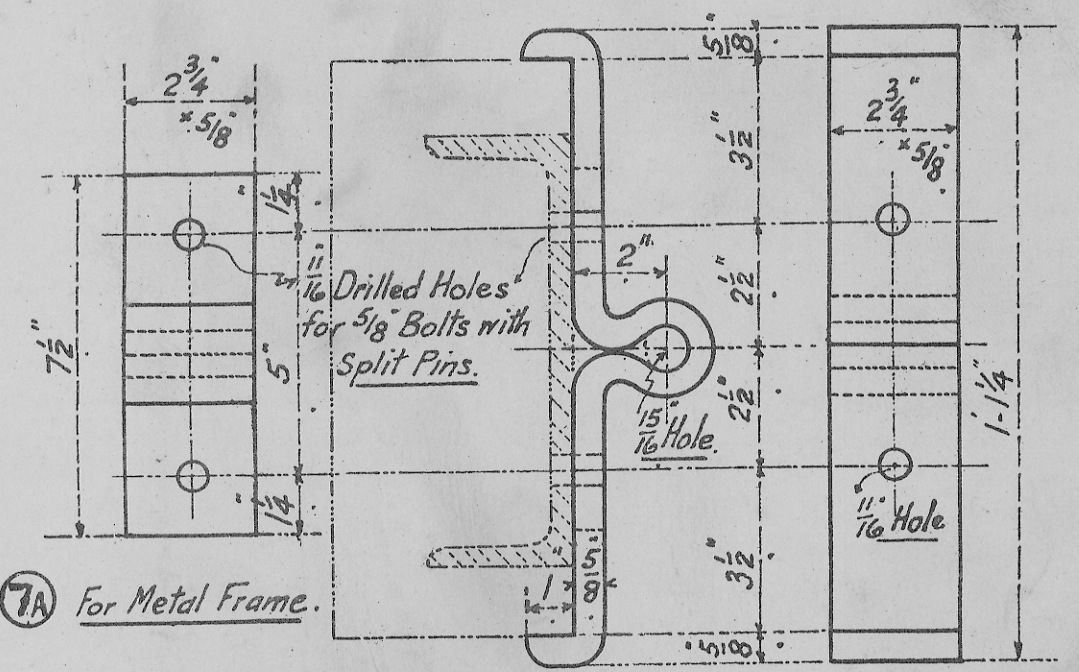
**9** — Safety Hanger. (Wood Frame).  
 2 Per Set. Morton Brake.  
 4 " " Double.  
 Grade B Iron or Mild Steel.



**10** — Bolt for Block Hanger. B. Iron.  
 4 Per Set Morton Brake.  
 8 " " Double "  
 Half Size.



**11** — Cotter for Pushrods Spring Steel.  
 4 Per Set Morton Brake Half Size.  
 8 " " Double "



**7A** For Metal Frame.  
**7** For Wood Frame.  
 Block Hanger Brackets. 4 Per Set. Double Brake.  
 2 " " Morton.  
 Grade B Iron or Mild Steel.  
 Scale 3 Inches to one Foot.

Note Machined Parts Shown Thus

— STANDARD 12 TON WAGON. —  
 — BRAKEWORK DETAILS —  
 — COMMON TO MORTON & DOUBLE BRAKE. —  
 — WOOD OR METAL UNDERFRAME. —  
 — GOODS, COKE & MINERAL WAGONS. —  
 — SCALE: — 1 1/2 IN = 1 FOOT. —