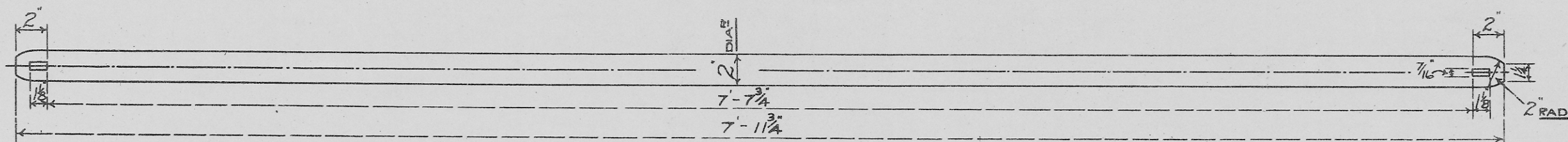
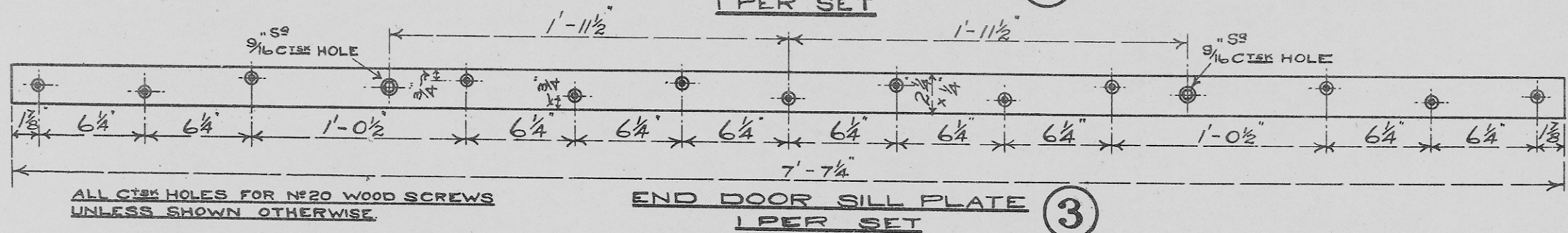


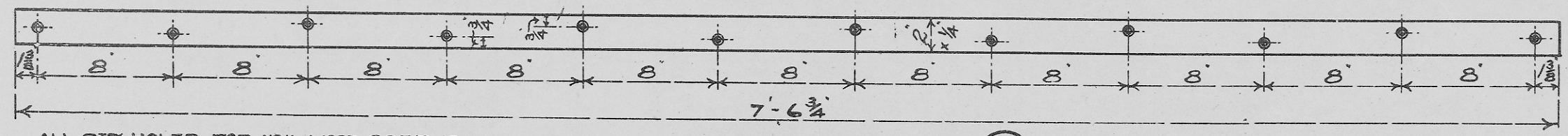
**END DOOR FASTENING BAR**  
1 PER SET (1)



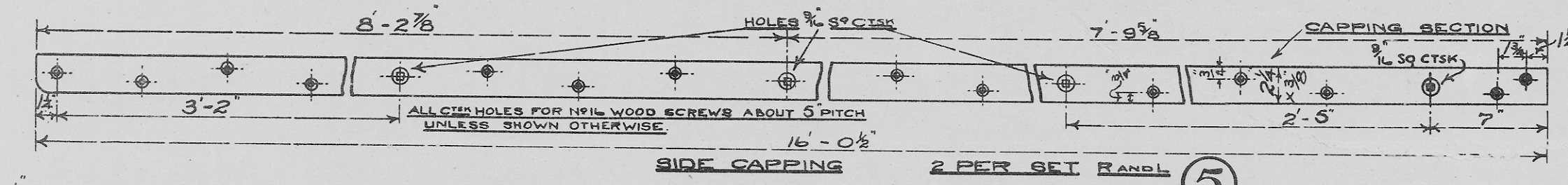
**HINGE ROD FOR END DOOR**  
1 PER SET (2) FOR ALTERNATIVE SEE DR. NO. 1017



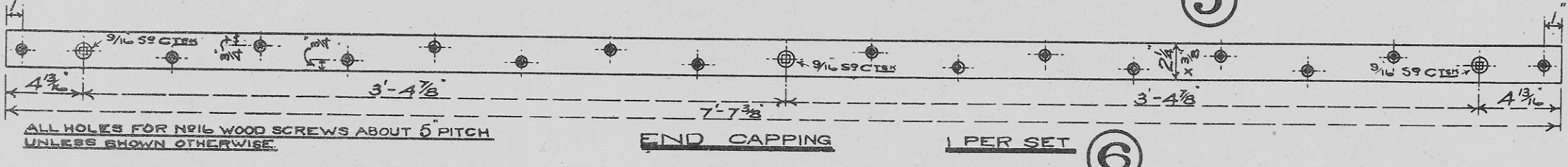
**END DOOR SILL PLATE**  
1 PER SET (3)



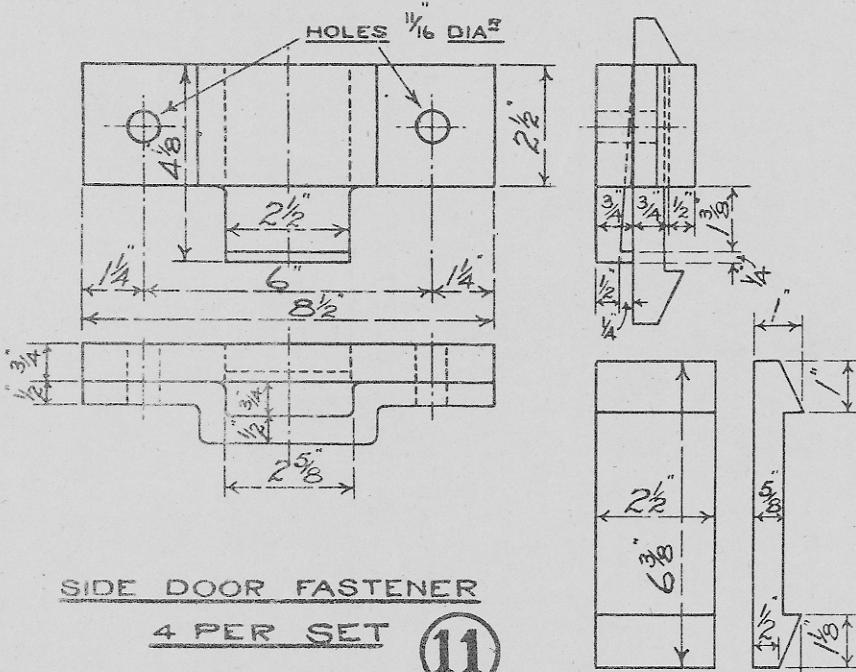
**END DOOR CAPPING**  
1 PER SET (4)



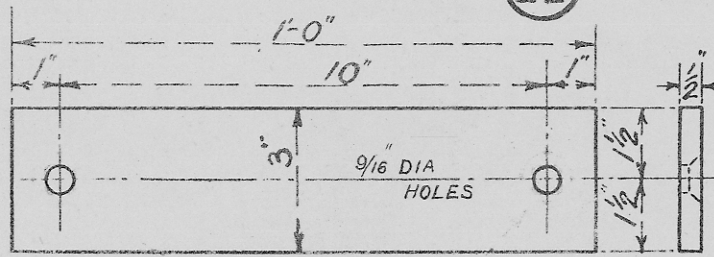
**SIDE CAPPING**  
2 PER SET RANDL (5)



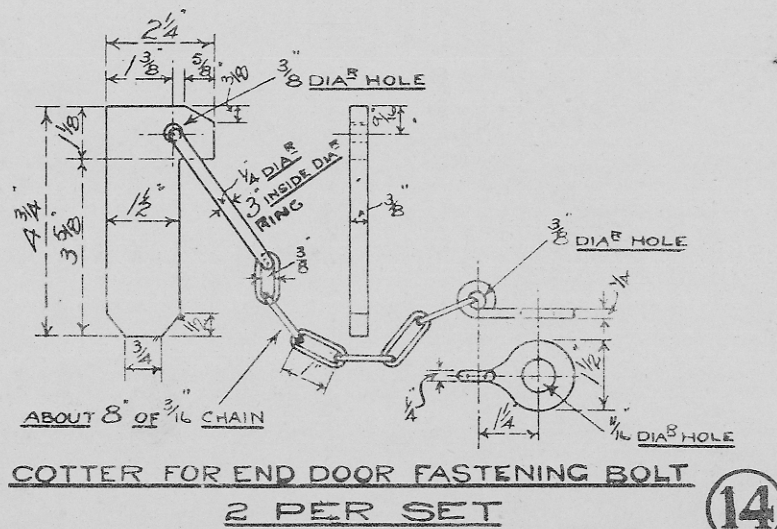
**END CAPPING**  
1 PER SET (6)



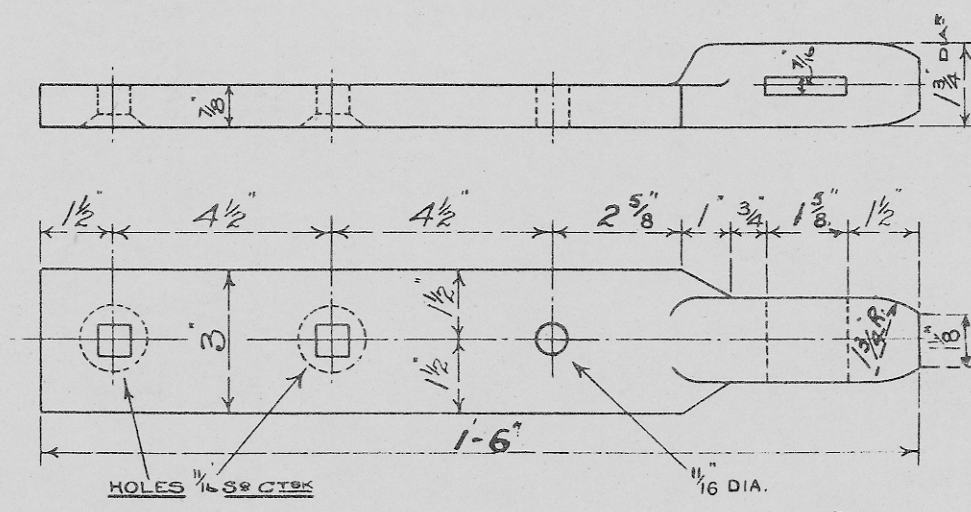
**SIDE DOOR FASTENER**  
4 PER SET (11)



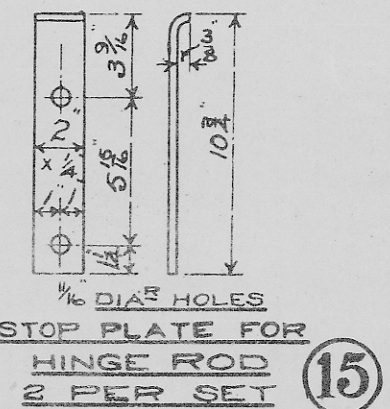
**DOOR STRIKING PLATE**  
2 PER SET (13)



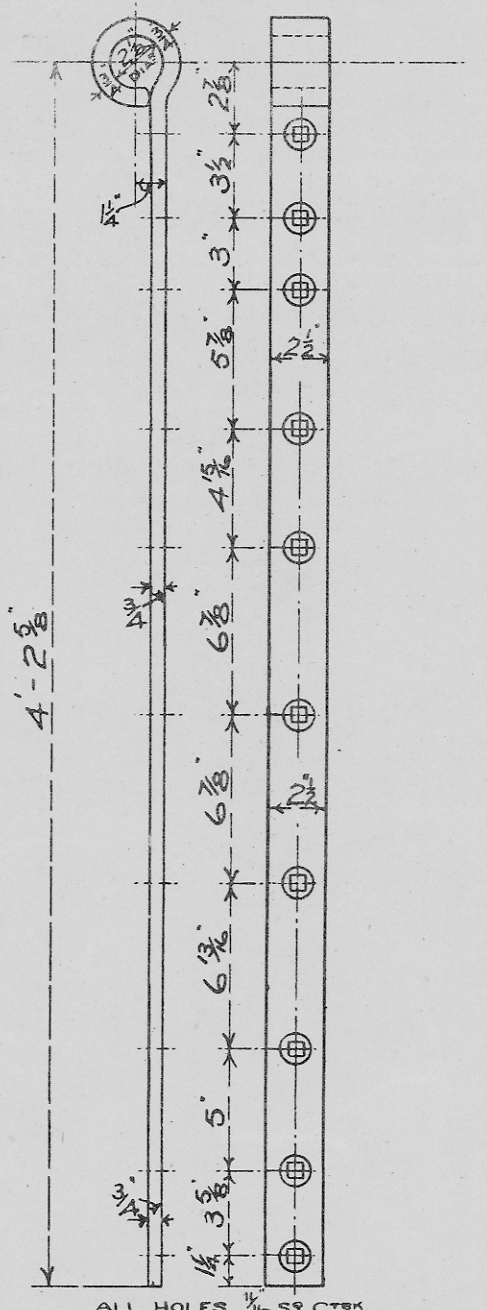
**COTTER FOR END DOOR FASTENING BOLT**  
2 PER SET (14)



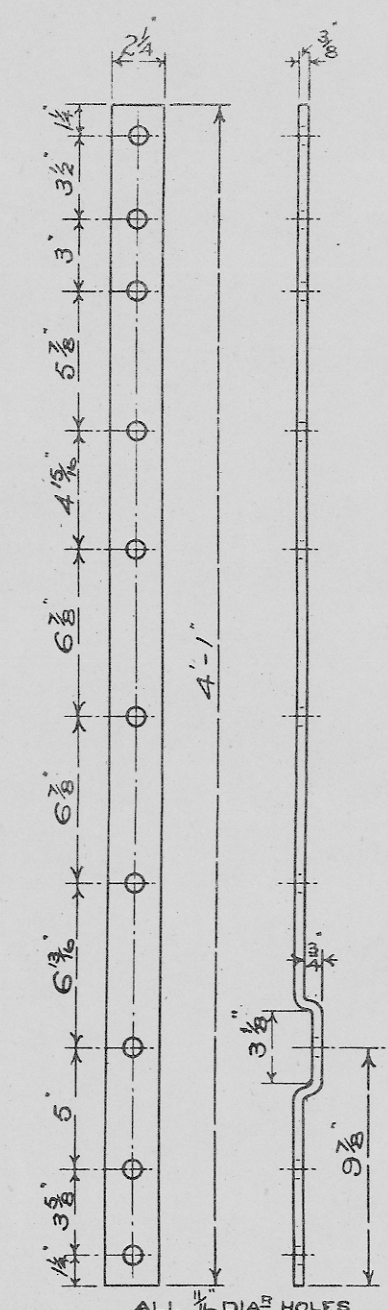
**END DOOR FASTENING BOLT**  
2 PER SET R. & L. (12)



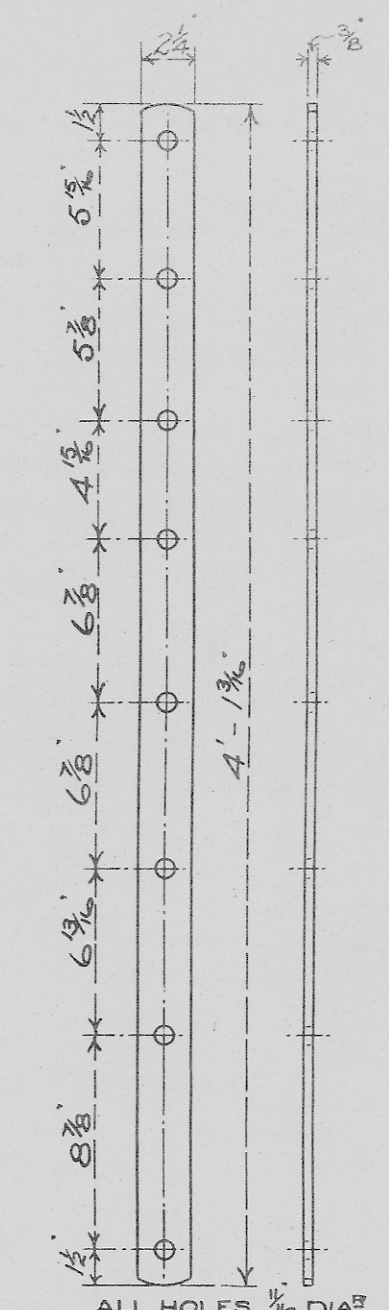
**STOP PLATE FOR HINGE ROD**  
2 PER SET (15)



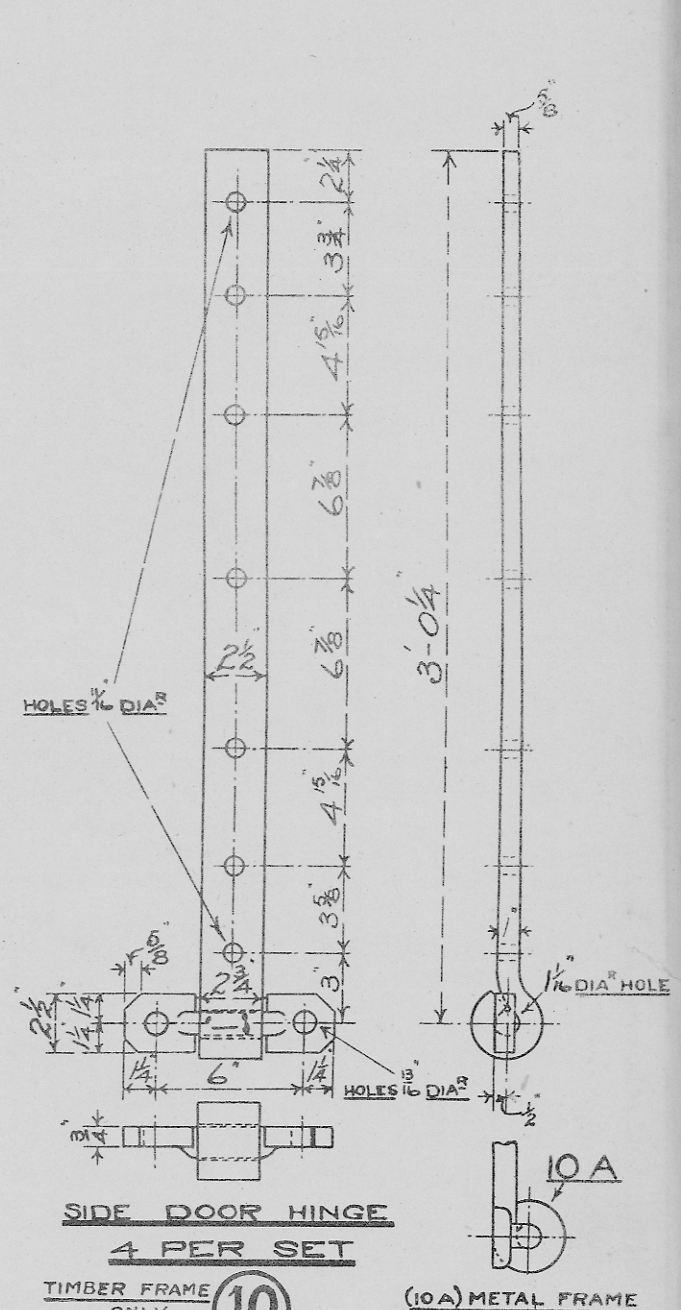
**END DOOR HINGE**  
3 PER SET (7)



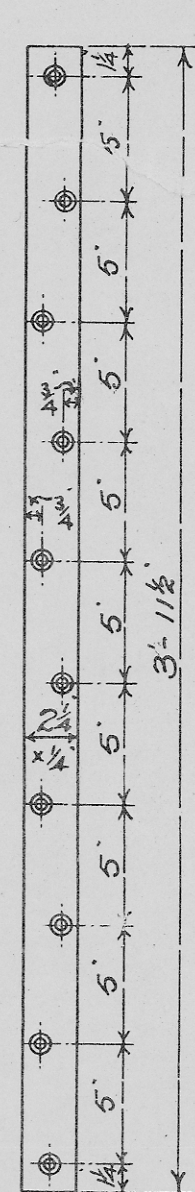
**WASHER PLATE FOR END DOOR**  
3 PER SET (8)



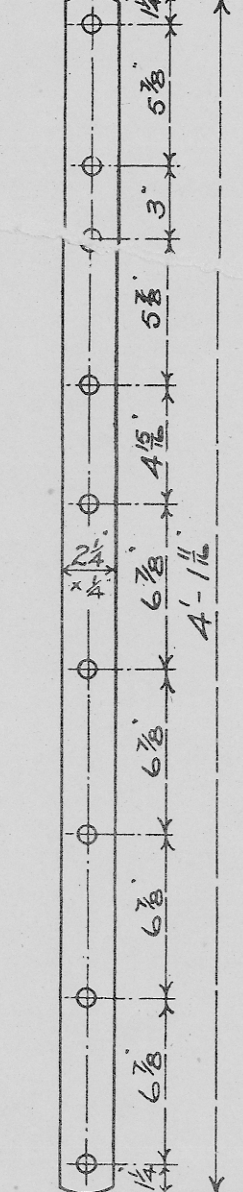
**WASHER PLATE FOR END KNEE**  
2 PER SET (9)



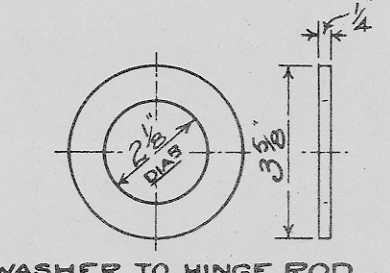
**SIDE DOOR HINGE**  
4 PER SET (10)  
(10A) METAL FRAME MAY BE USE AS AN ALTERNATIVE FOR TIMBER FRAME.



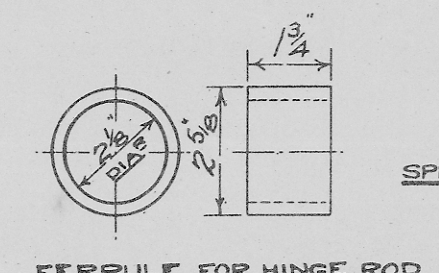
**SIDE DOOR SILL AND TOP PLATE**  
4 PER SET (16)



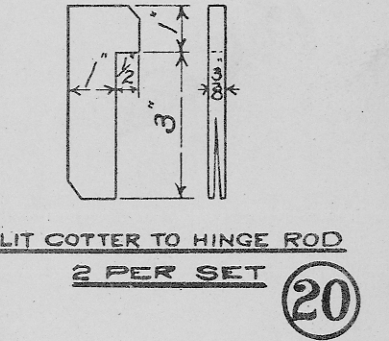
**WASHER PLATE TO BODY KNEE**  
4 PER SET (17)



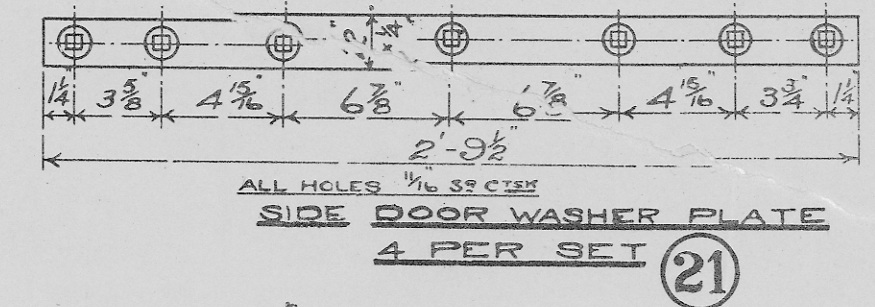
**WASHER TO HINGE ROD**  
2 PER SET (18)



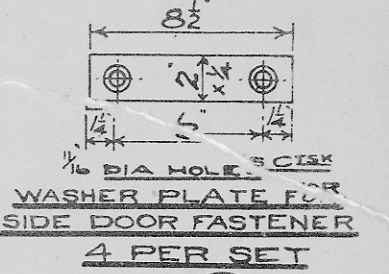
**FERRULE FOR HINGE ROD**  
2 PER SET (19)



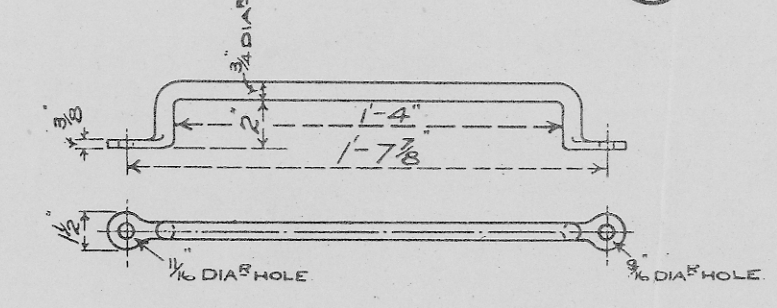
**SPLIT COTTER TO HINGE ROD**  
2 PER SET (20)



**SIDE DOOR WASHER PLATE**  
4 PER SET (21)



**WASHER PLATE FOR SIDE DOOR FASTENER**  
4 PER SET (23)



**COMMODOE HANDLE**  
2 PER SET (22)

MUST BE FITTED ON WAGONS WORKING TO BARRY, CARDIFF, AND PENARTH DOCKS.

**STANDARD 12 Ton Wagon.**  
**Body Details, Common to Mineral Wagons.**  
**WITH TIMBER OR METAL UNDERFRAME.**

**SCALE 1 1/2 & 3 IN = 1 FOOT**  
**APRIL 1923. DR. NO. 1013.**

NOTE: FOR ALTERNATIVE END DOOR DETAILS SEE DR. NO. 1017.