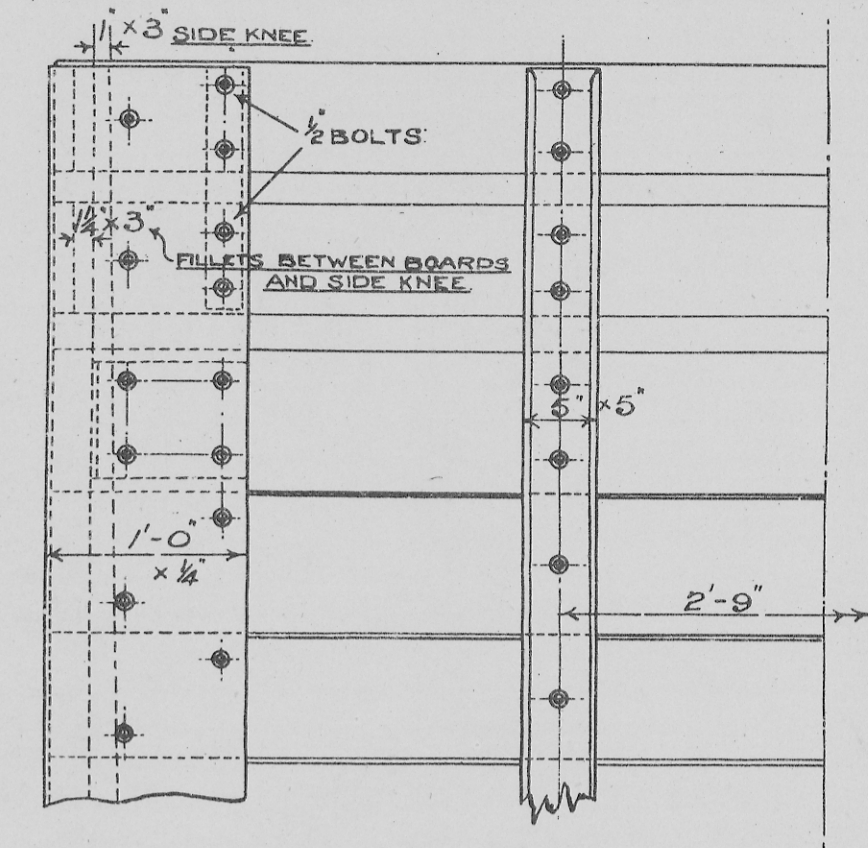


— SIDE ELEVATION —

— LONGITUDINAL SECTION —

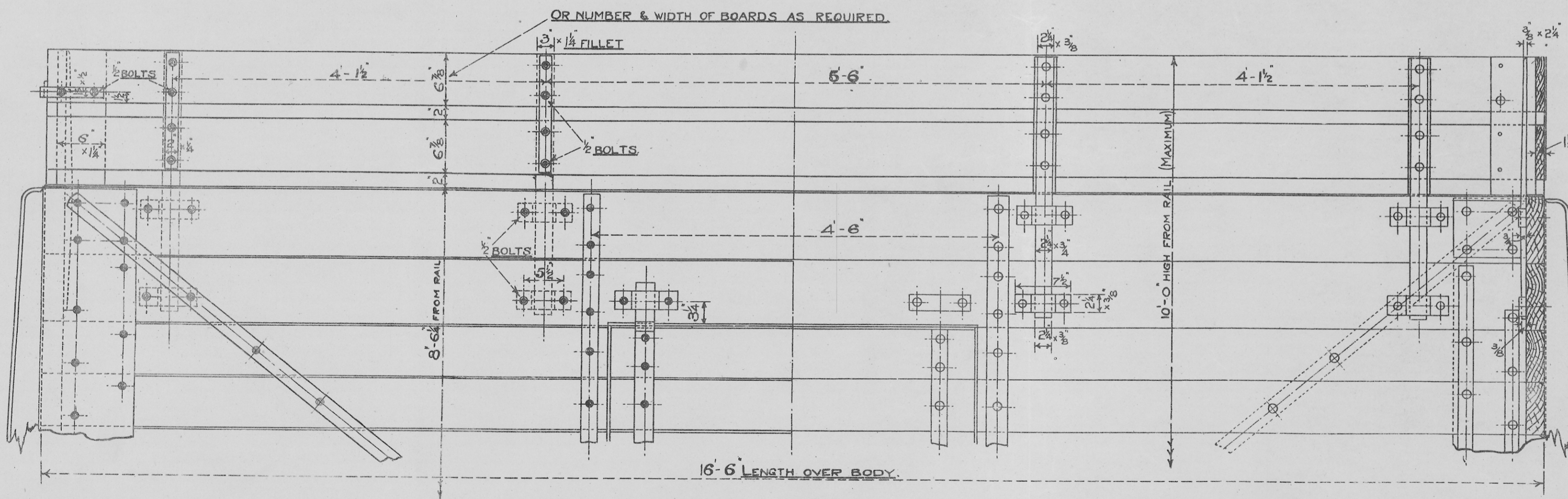
— FIXED COKE RAILS —



— END ELEVATION —

THESE ARRANGEMENTS ARE SHOWN ON WAGONS WITH TIMBER UNDERFRAMES BUT THEY APPLY ALSO TO METAL FRAME WAGONS. ALTERATIONS TO SUIT DIFFERENCE IN DEPTH TO BE MADE AS REQUIRED.

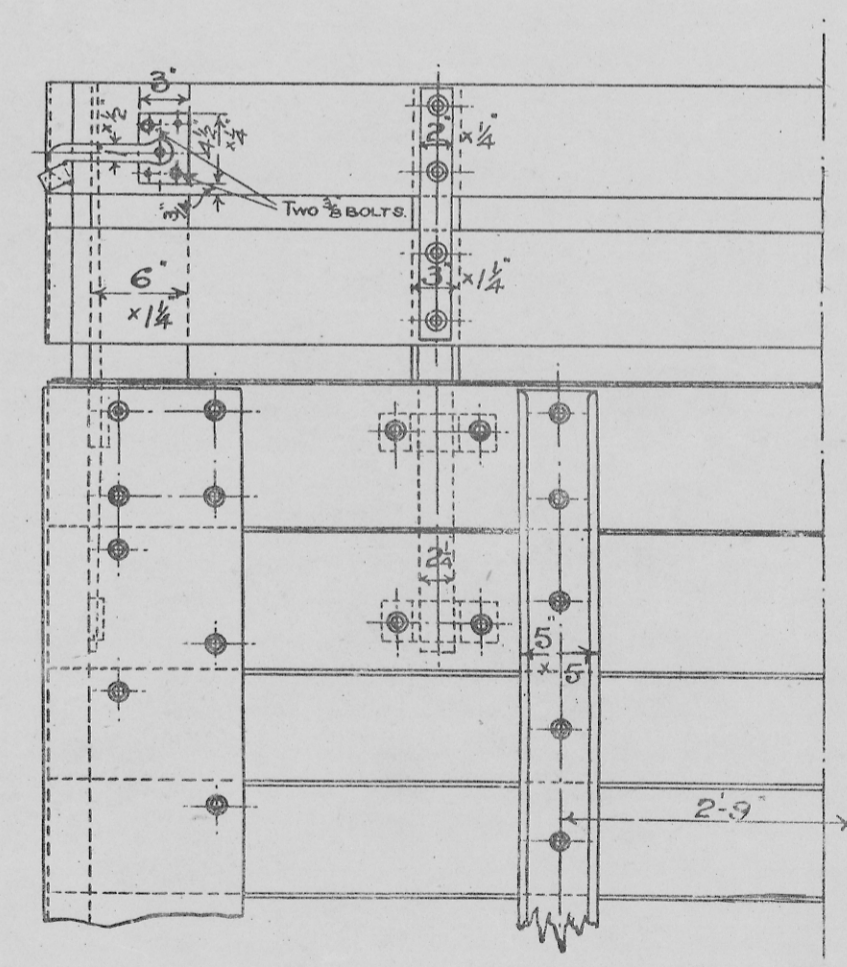
NOTE: DETACHABLE COKE RAILS MUST NOT BE FITTED TO WAGONS EXCEEDING 16'-6" IN LENGTH OVER HEADSTOCKS. WAGONS TO WHICH DETACHABLE COKE RAILS ARE FITTED MUST BE MARKED WITH TARES BOTH WITH AND WITHOUT RAILS.



— SIDE ELEVATION —

— LONGITUDINAL SECTION —

DETACHABLE COKE RAILS FOR MINERAL WAGON.
(OR THEY MAY BE FIXED IF REQUIRED.)



— END ELEVATION —

STANDARD 12 TON WAGON
ARRANGEMENT OF FIXED & DETACHABLE
COKE RAILS
SCALE: 1 IN = 1 FOOT
APRIL 1923 D^o N^o 1016.