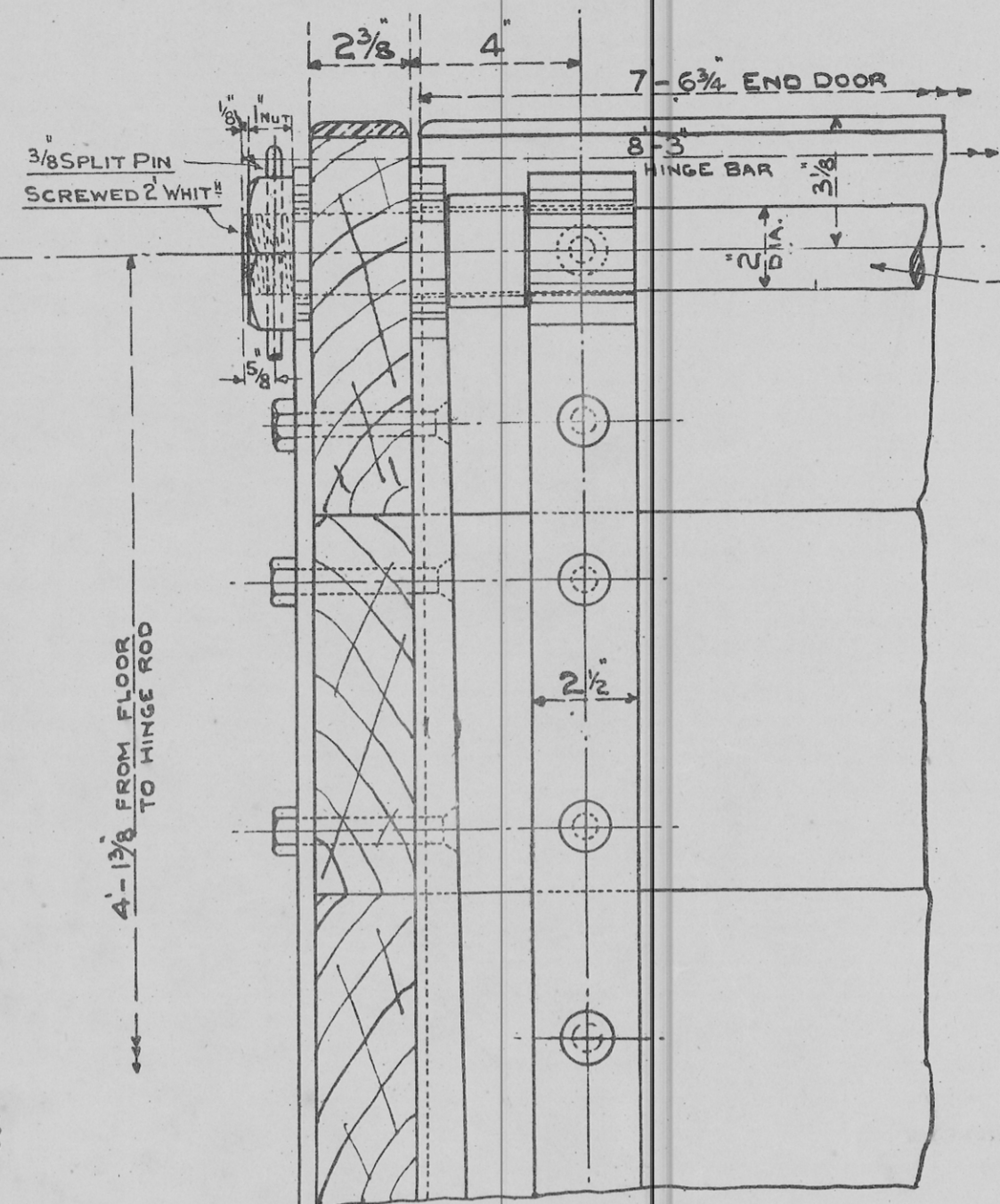


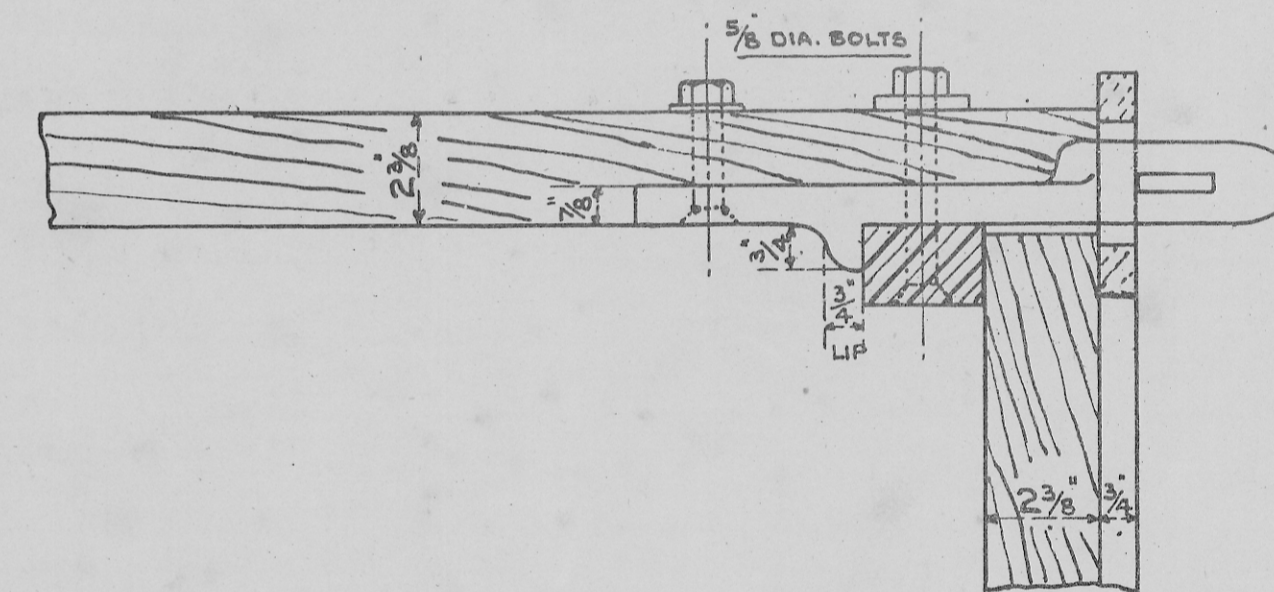
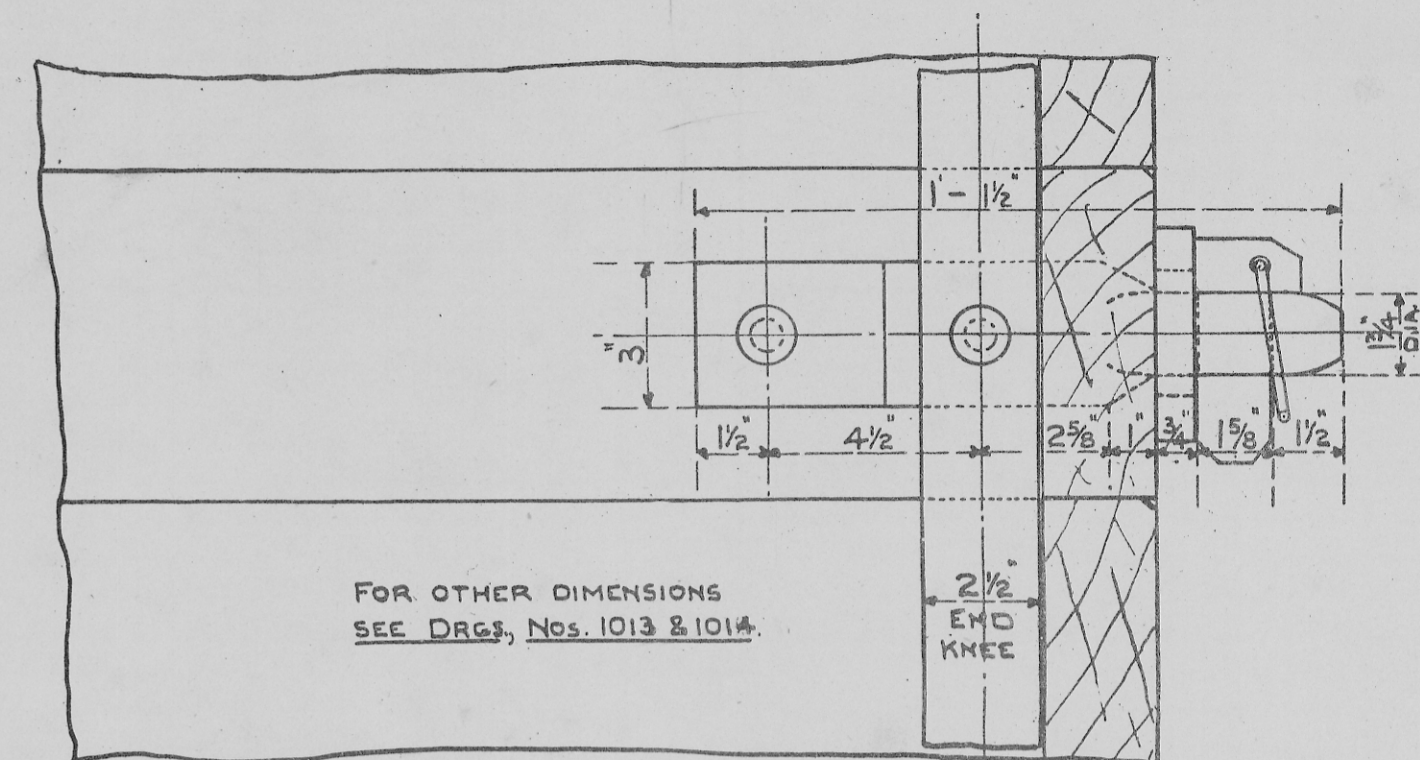
PART LONGITUDINAL SECTION

END KNEE 1

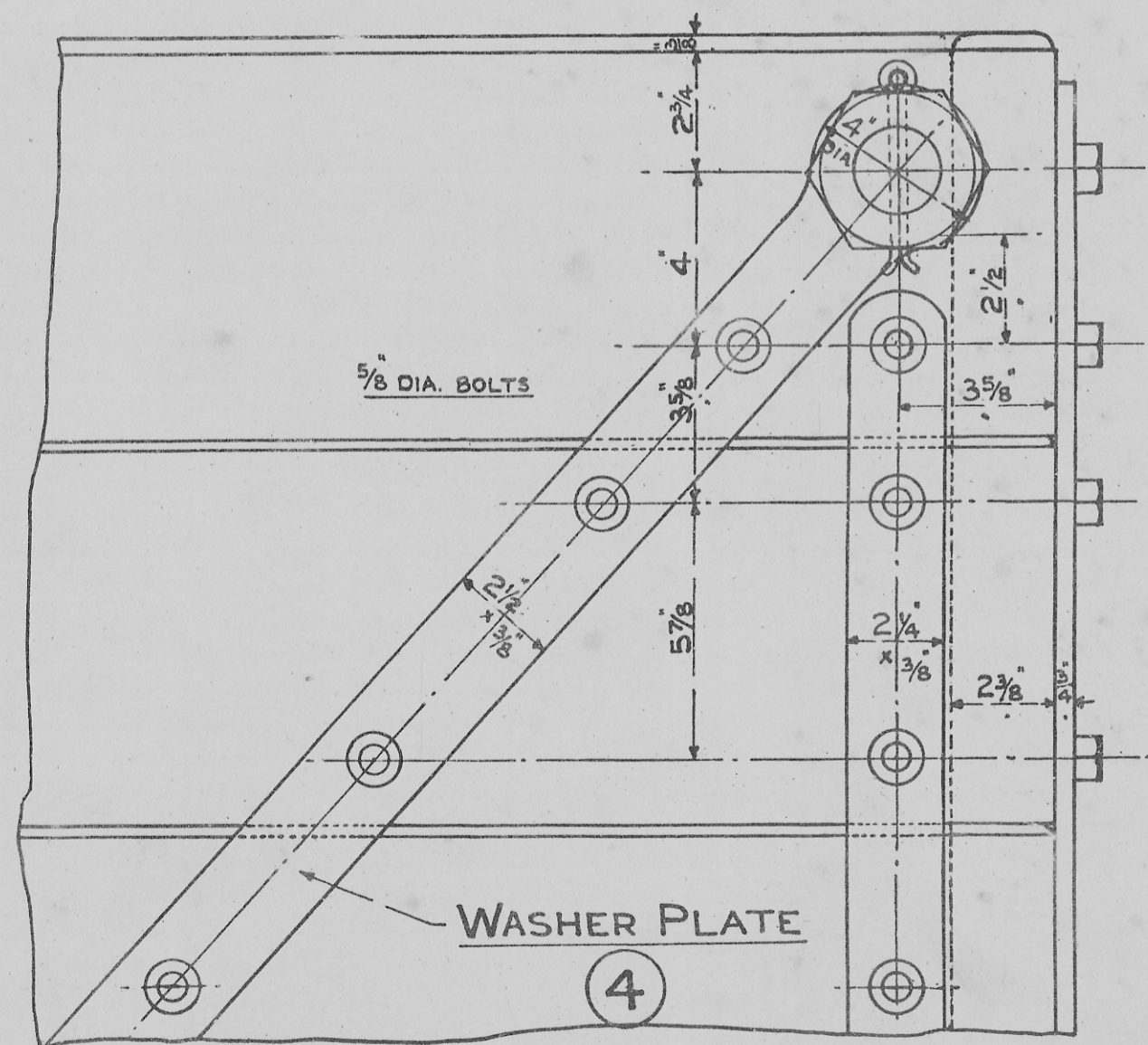


PART TRANSVERSE SECTION

HINGE BAR 2



LIPPED FASTENING 3



PART SIDE ELEVATION

WASHER PLATE 4

HINGE BAR AND DETAILS

— STANDARD 12 TON WAGON. —
 — ALTERNATIVE END DOOR DETAILS. —

— SCALE 3 IN. = 1 FOOT. —

APRIL 1923

DG. No 1017