

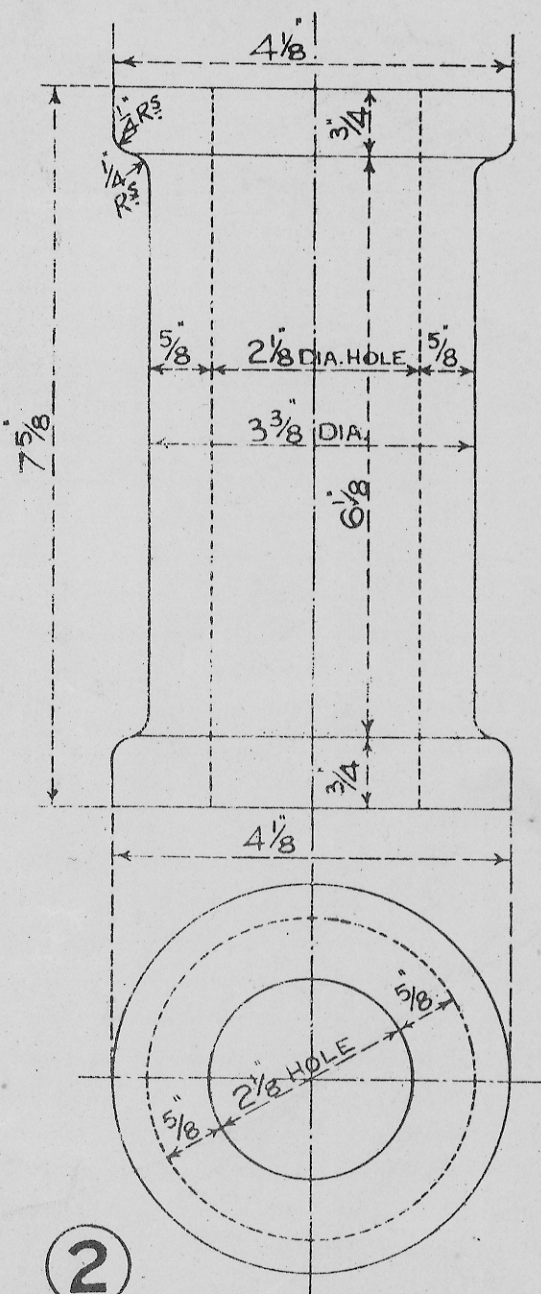
BUFFER GUIDES WITH FOOTSTEP MUST BE FITTED ON WAGONS WORKING TO BARRY, CARDIFF AND PENARTH DOCKS.

- ① GUIDES FITTED WITH WEBS ONLY.
- ② GUIDES FITTED WITH PROJECTION "A" & FOOTSTEP
- ③ GUIDES FITTED WITH FOOTSTEP

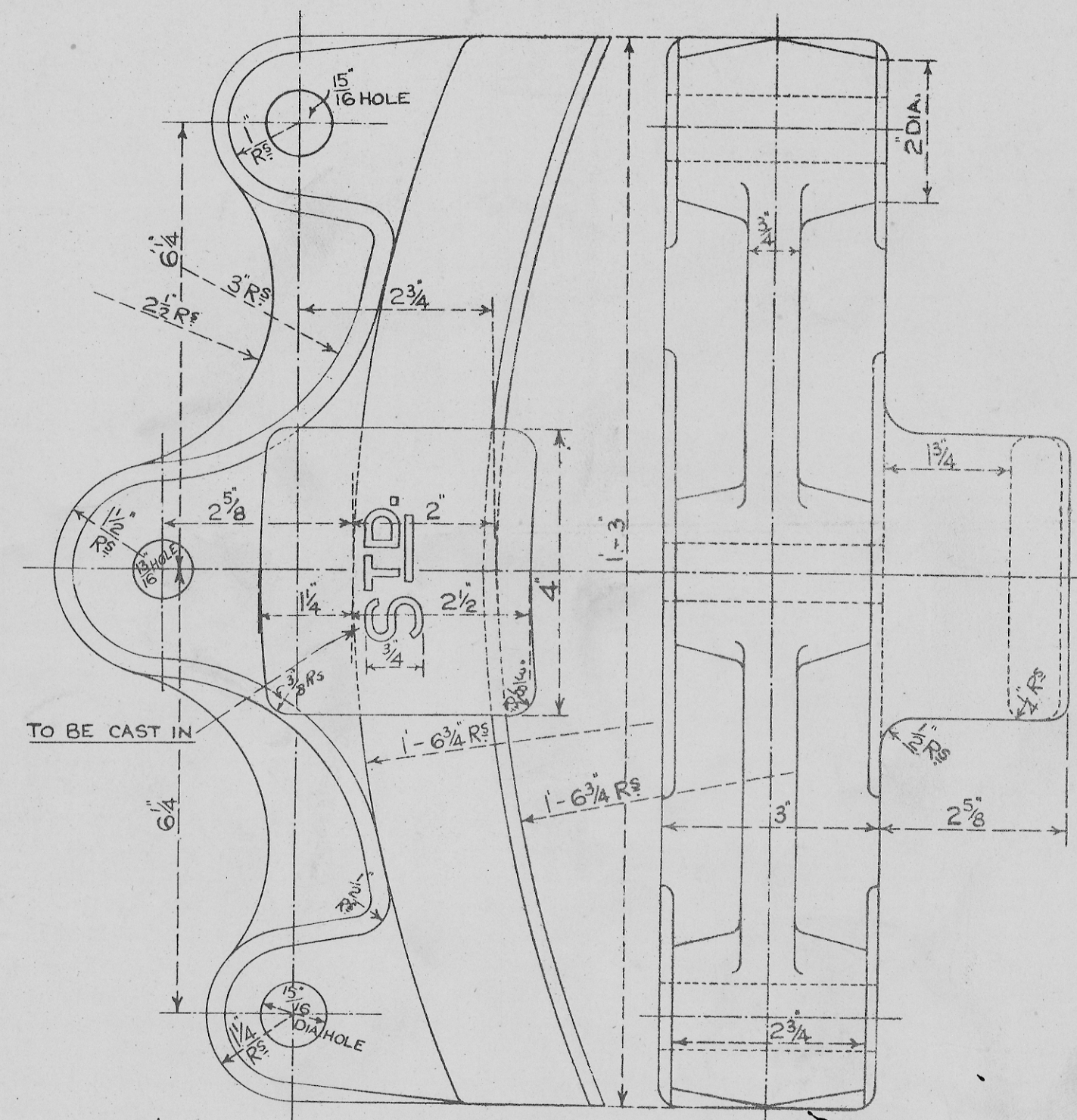
EACH CASTING TO HAVE ITS NUMBER CAST ON THUS.

BUFFER GUIDE
4 PER SET

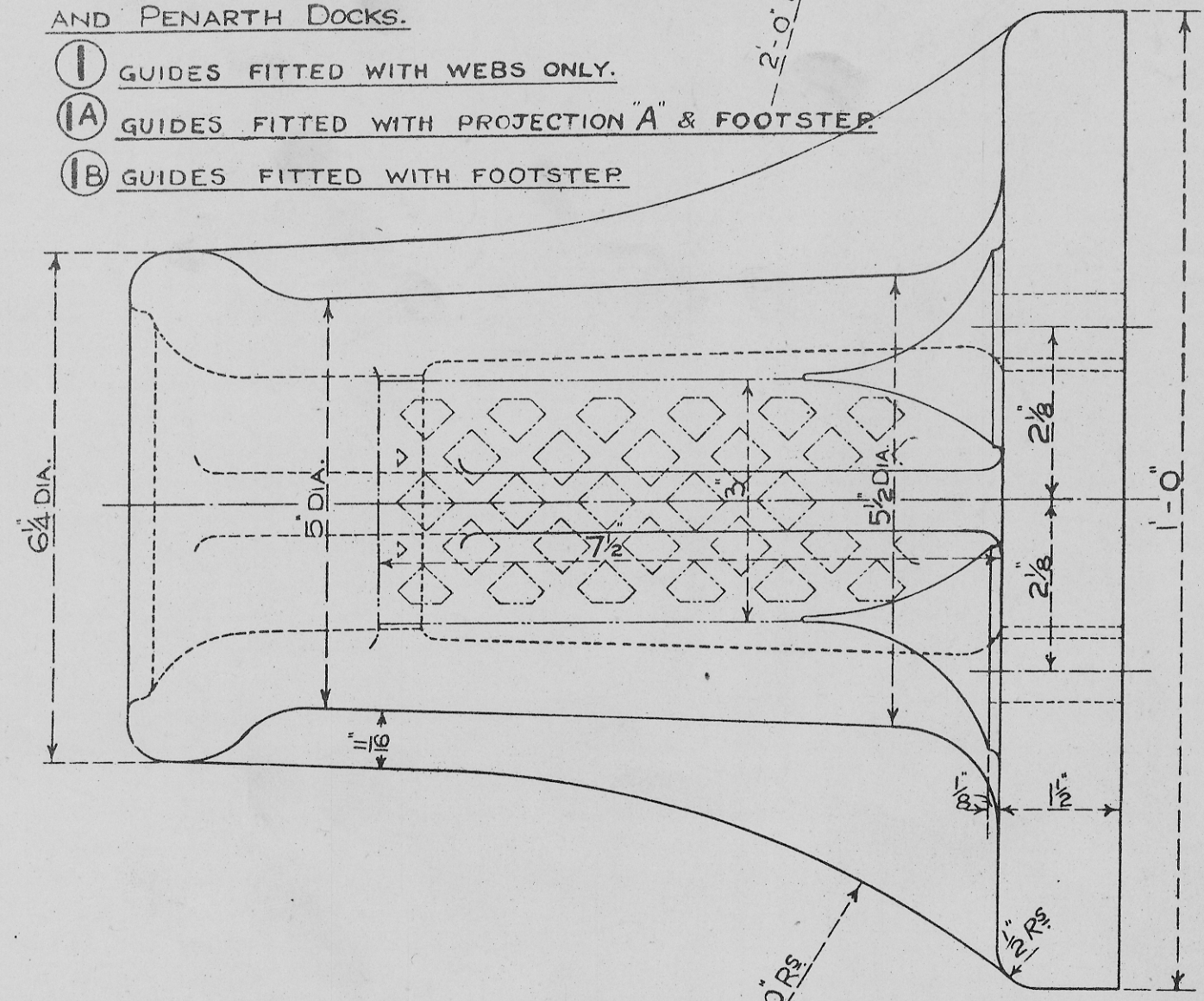
BUFFER GUIDES WITH PROJECTION "A" TO BE FITTED AT DOOR END OF WAGONS WITH TIMBER UNDERFRAMES.



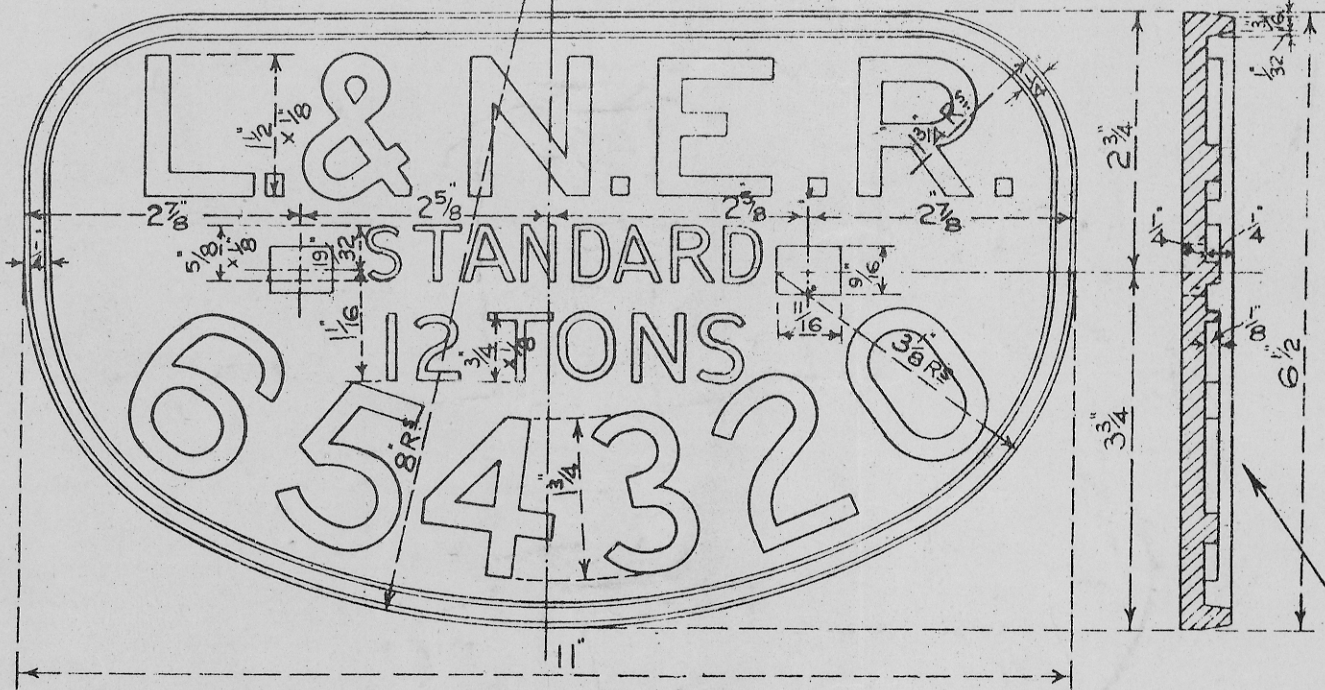
2
PACKING FERRULE FOR ALL RUBBER DRAWSPRING.
1 PER SET



3
BRAKE BLOCK
2 PER SET MORTON BRAKE
4 " " DOUBLE "

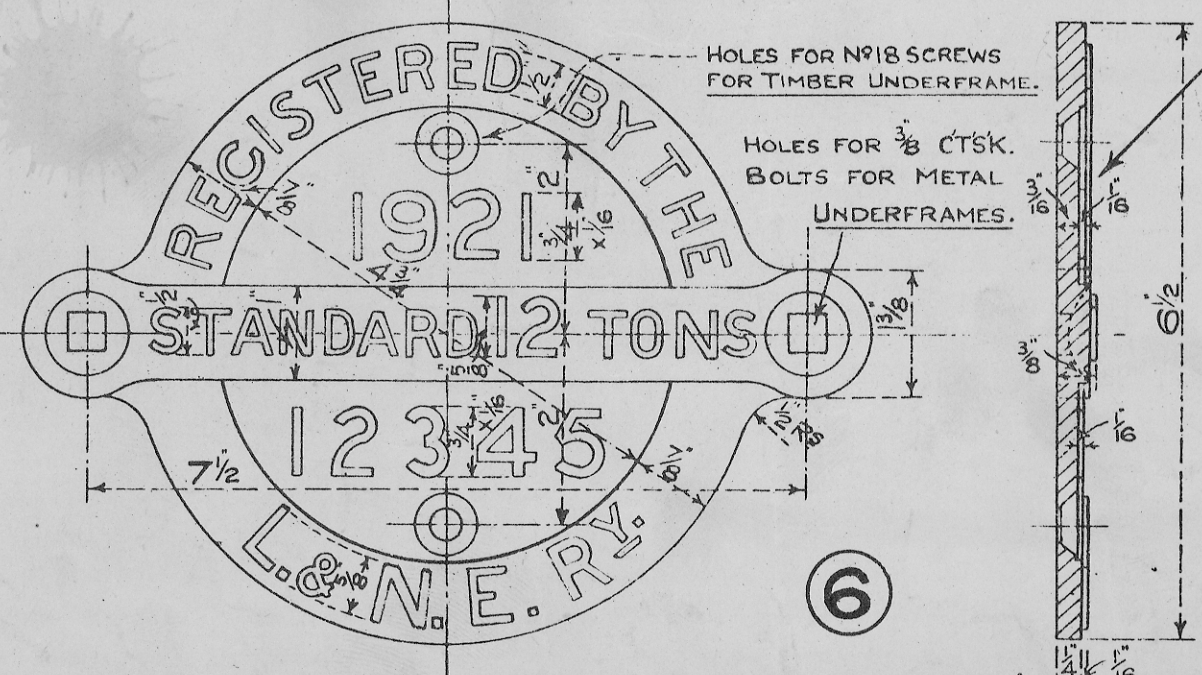


5
BEARING SPRING STOP
TIMBER UNDERFRAME
4 PER SET



4
FOR RAILWAY COMPANIES WAGONS
NAME, NUMBER & C. PLATE.
2 PER SET

INITIALS, NUMBER & YEAR TO BE INSERTED AS REQUIRED.



6
REGISTER PLATE
2 PER SET

FOR PRIVATE OWNERS WAGONS.

STANDARD 12 TON WAGON.
DETAILS OF IRON CASTINGS.

HALF SIZE

APRIL 1923 D_E N^o 1021