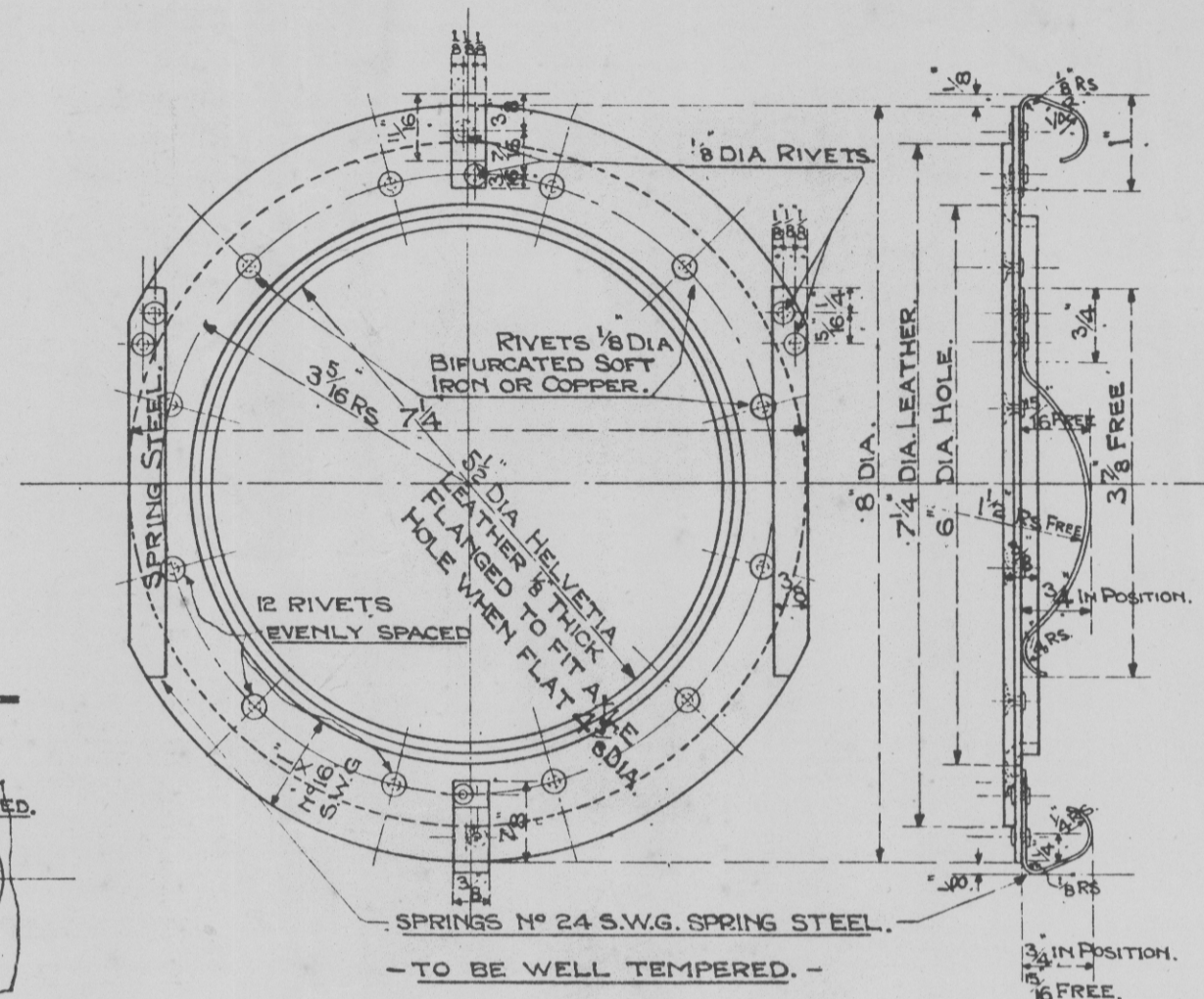
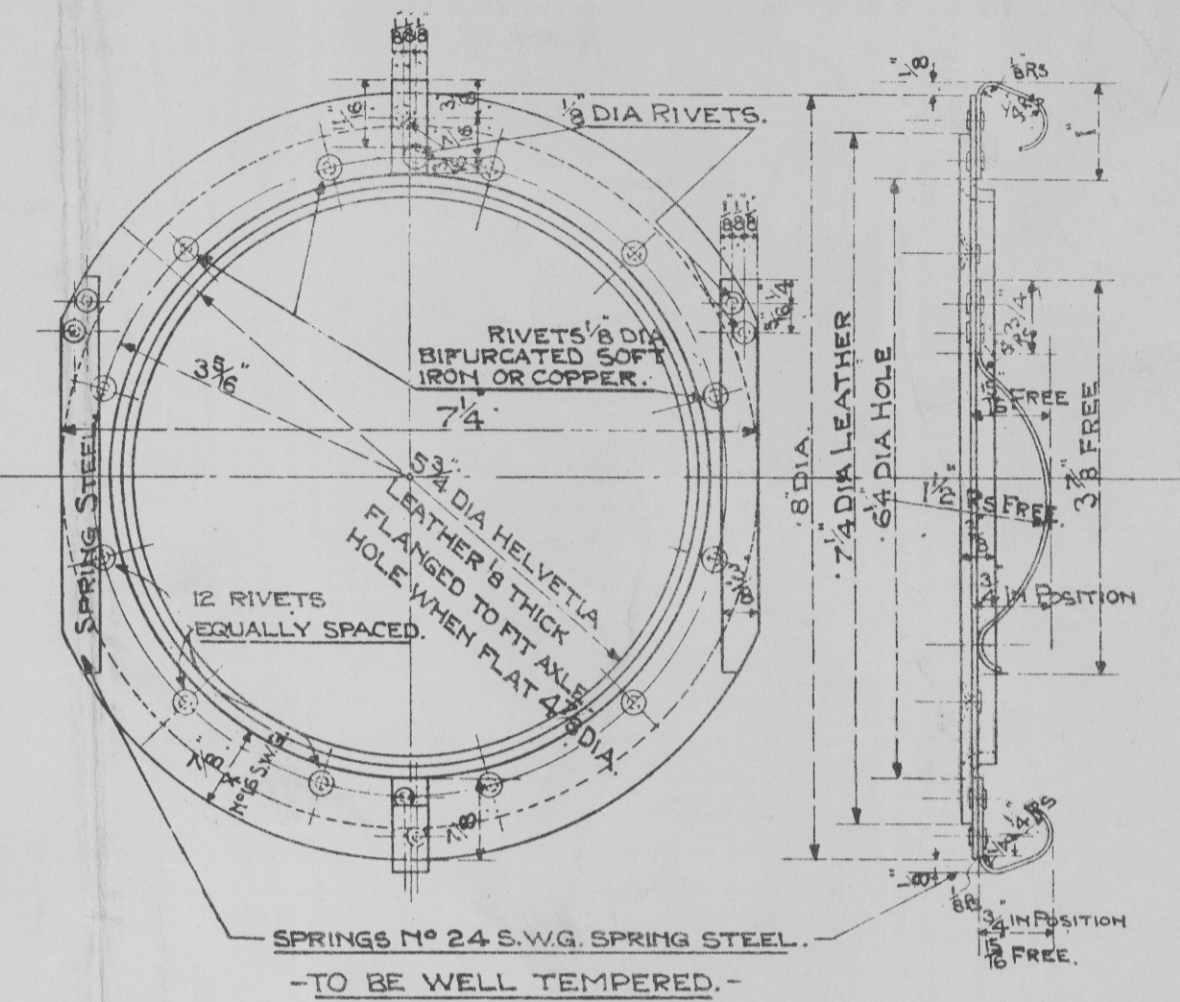


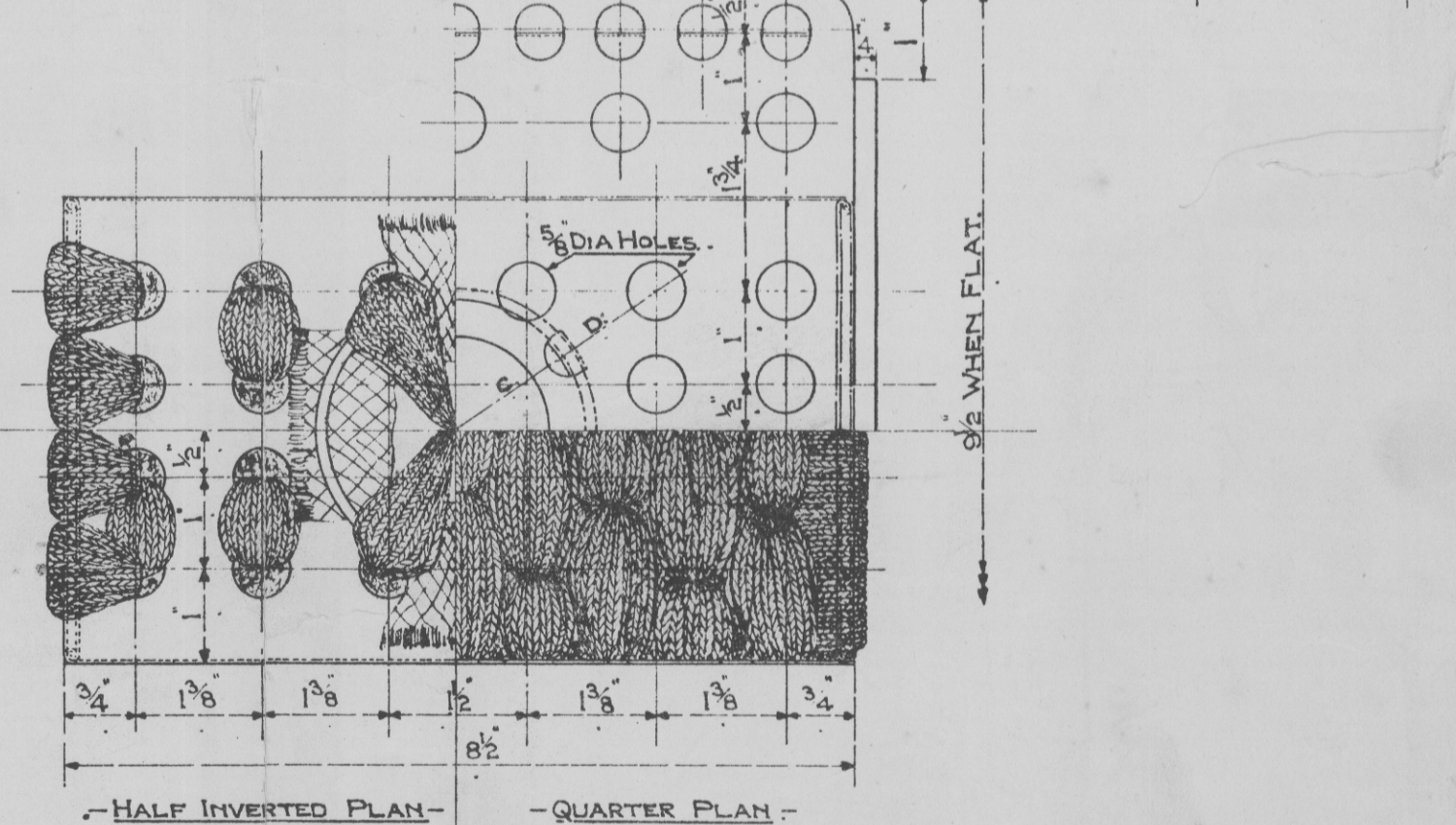
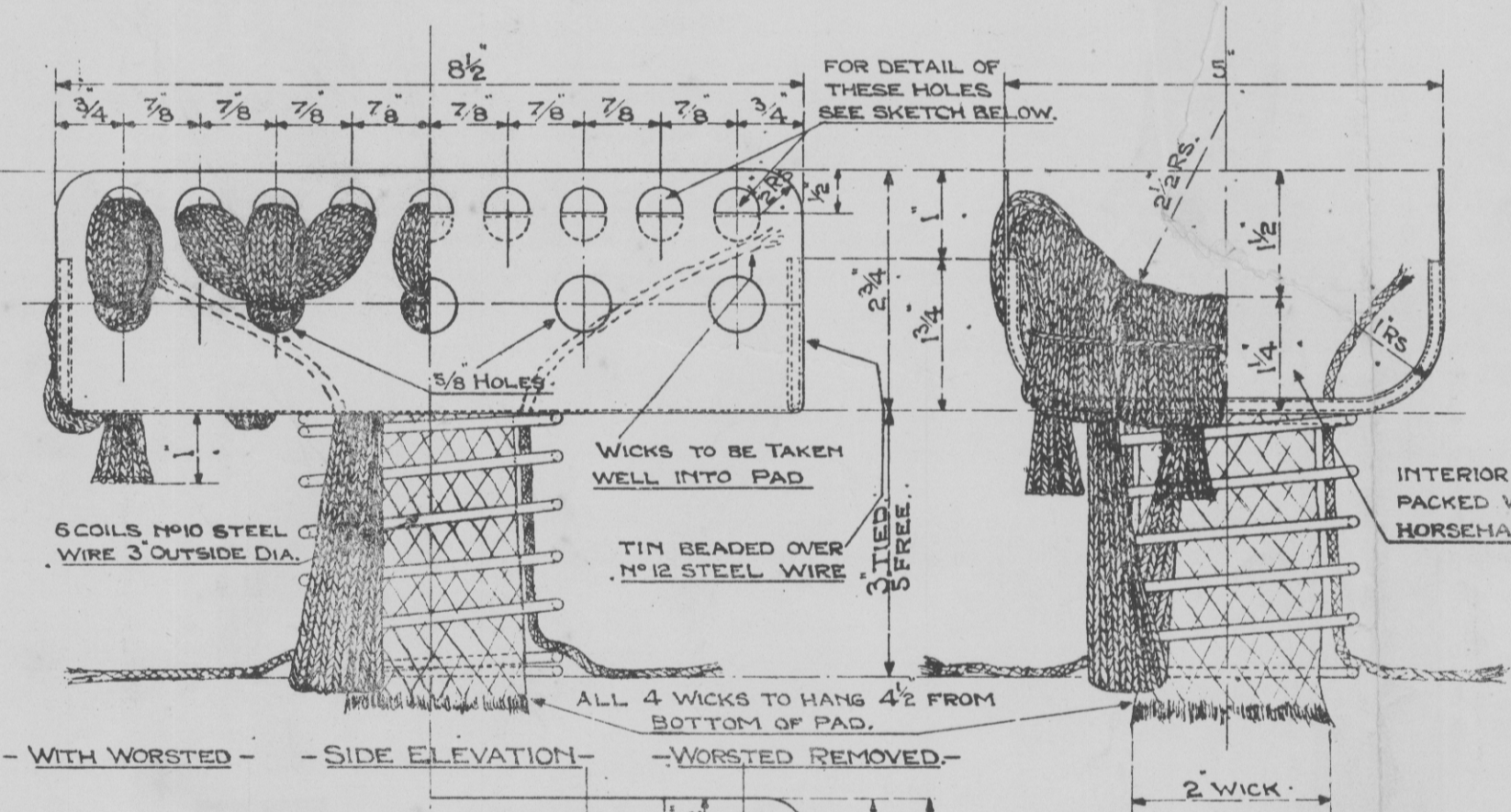
- STANDARD 12 TON WAGON & 10, 12 OR 14 TON TANK WAGONS. -
 - 9" x 4 1/4" OR 4 1/2" JOURNALS. -
 - LUBRICATING PAD. - **1**



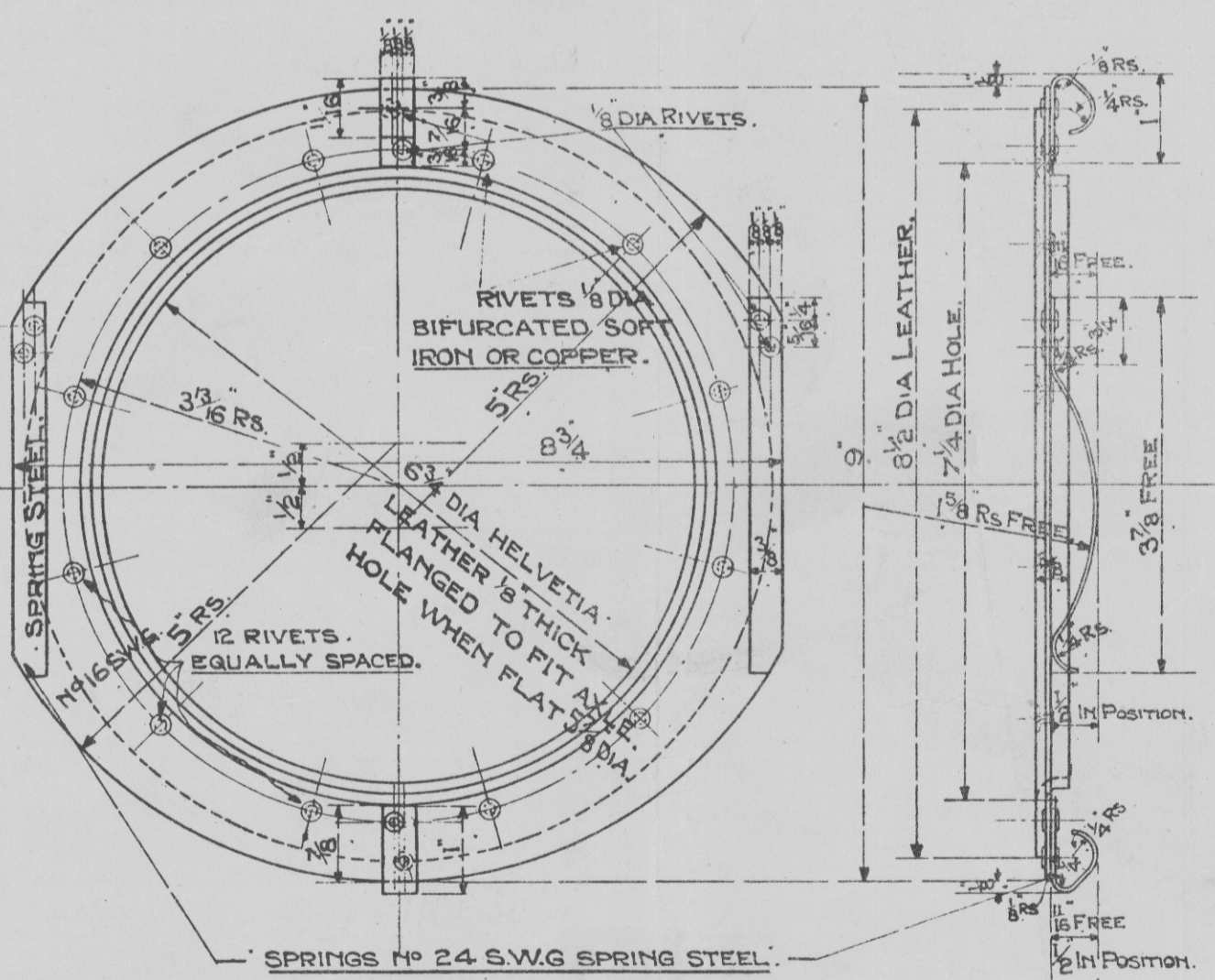
- STANDARD 12 TON WAGON & 10 TON TANK WAGON. -
 - SPRING DUST SHIELD. - **2**



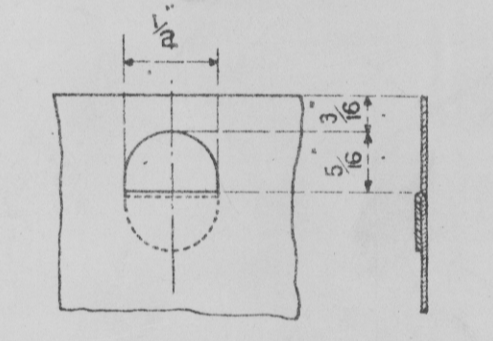
- STANDARD 12 OR 14 TON TANK WAGON. -
 - SPRING DUST SHIELD. - **3**



- STANDARD 20 TON MINERAL WAGON OR 20 TON TANK WAGON. -
 - 10" x 5" JOURNALS. -
 - LUBRICATING PAD. - **4**



- STANDARD 20 TON MINERAL OR TANK WAGON. -
 - SPRING DUST SHIELD. - **5**



DETAIL FOR TOP ROW OF HOLES IN SIDE ELEVATION. - FULL SIZE. -

STANDARD MINERAL, GOODS AND TANK WAGONS.
 LUBRICATING PADS AND DUST SHIELDS FOR AXLEBOXES.
 HALF SIZE.
 APRIL 1923 DRG NO 1023.