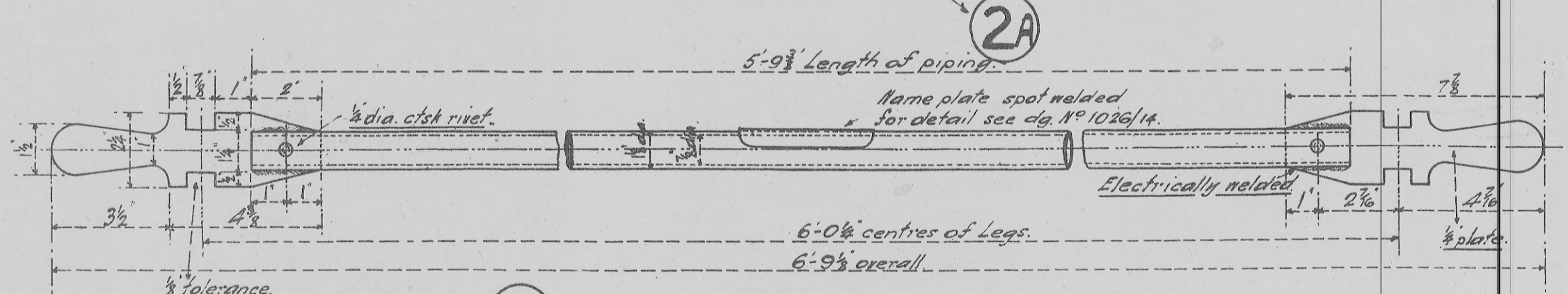
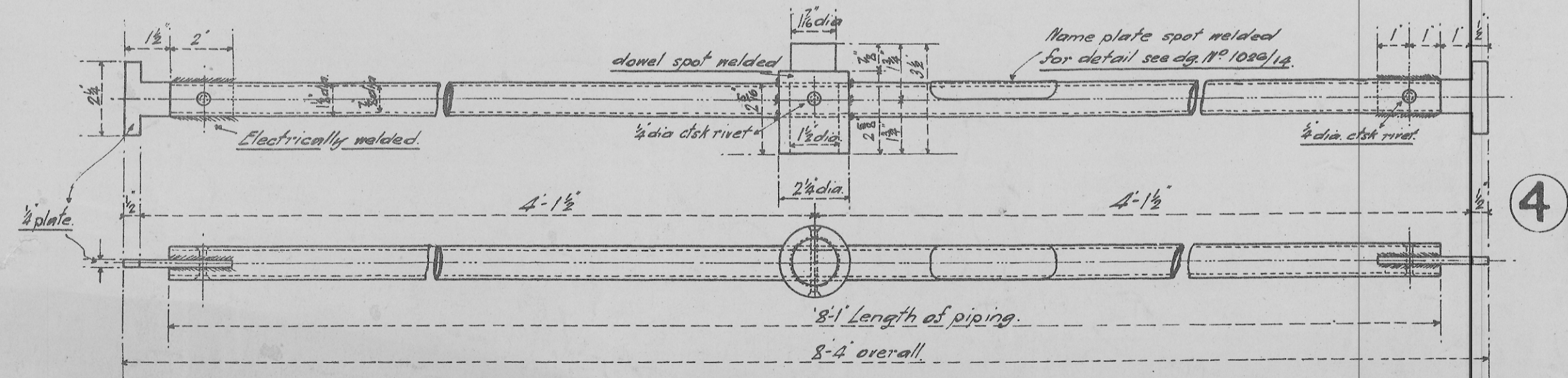


1 — Gauge between Legs.

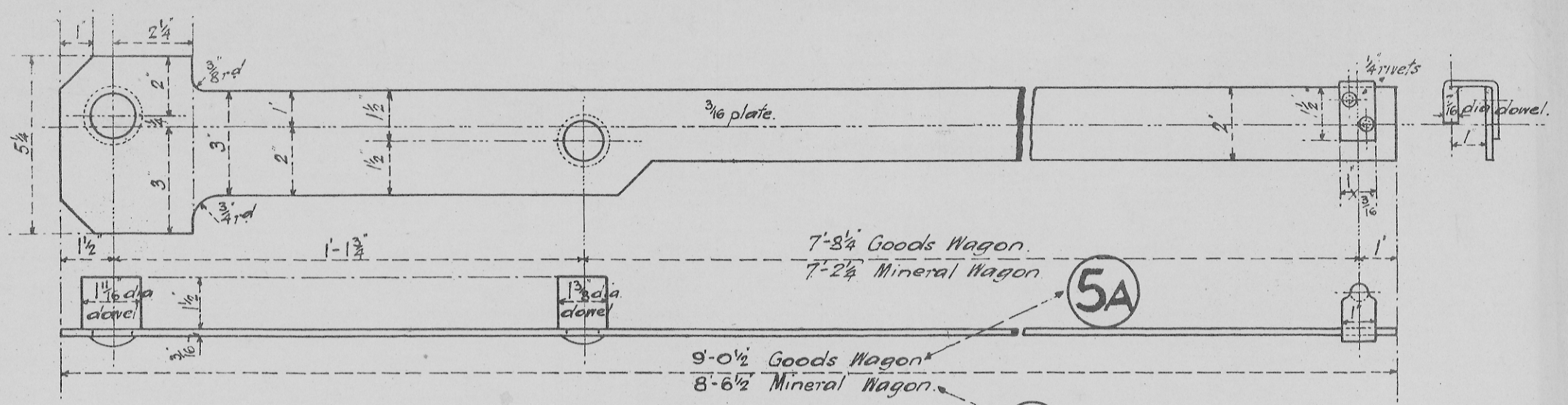
2 — Gauges for Holes. — One for Steel and One for Wood frames.



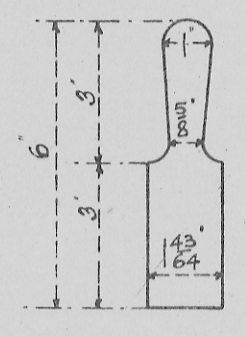
3 — Gauge for Legs - Transversely.



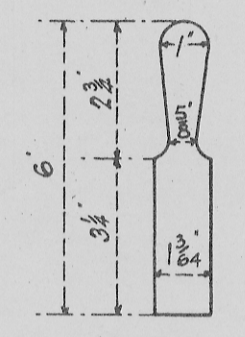
4 — Gauge for Axleguards and Wheelbase in relation to Vee Hangers. — AXLEGUARD GAUGES & C.



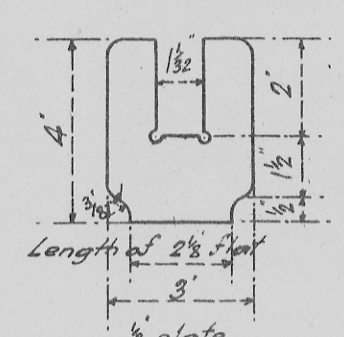
5 — Gauge for Drawbar Lengths.



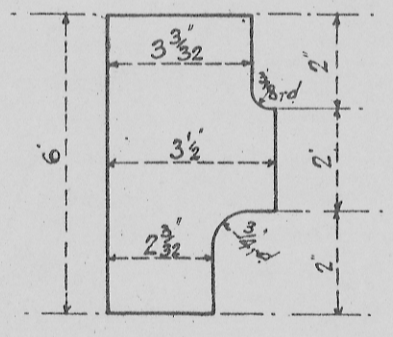
6 — Drawhook Throat.



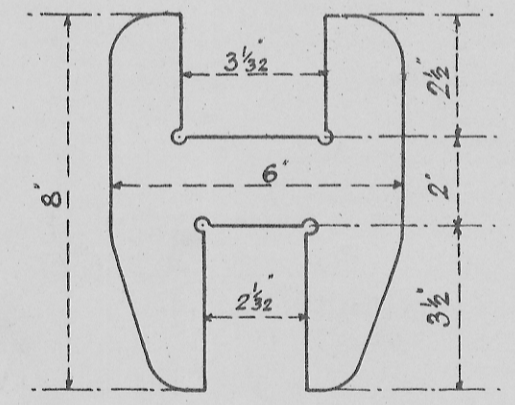
7 — Gedge's Slot.



8 — Flat on Coupling Link.



9 — Drawbar Plates.



10 — Drawhook Shoulder.

— DRAWGEAR GAUGES. —

Note: — Plate Templates and Gauges to be clearly stamped with the designation and number shown hereon.  
 Tube Gauges to have a name plate, suitably stamped, spot welded to them as shown.  
 For detail of plate see dia. N° 1026/14.

STANDARD 12 TON WAGON.  
 TEMPLATES & GAUGES.  
 SCALE:— 3 IN = 1 FOOT.  
 APRIL 1923. D<sup>o</sup> N° 1024.