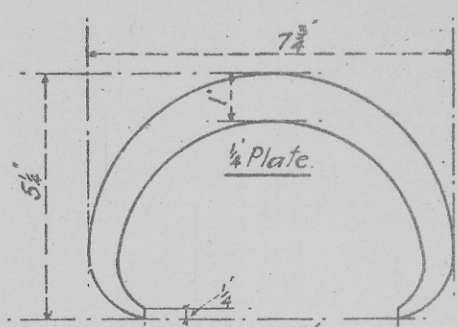


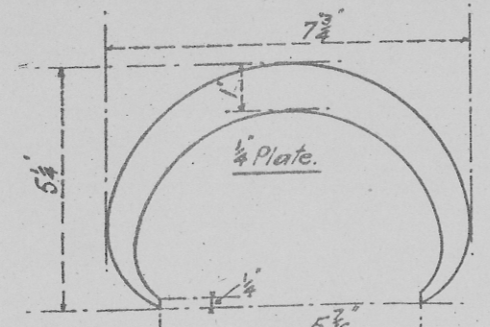
— Axle Journal. —

①



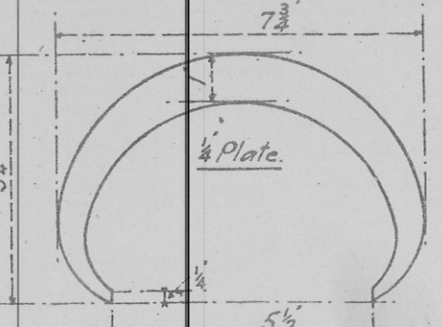
— Axle Collar. —

②



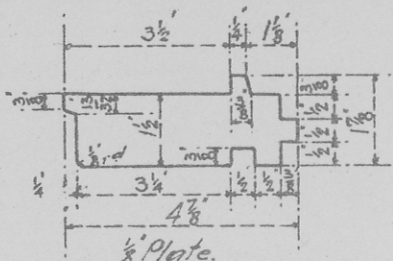
— Axle Set-Off. —

③



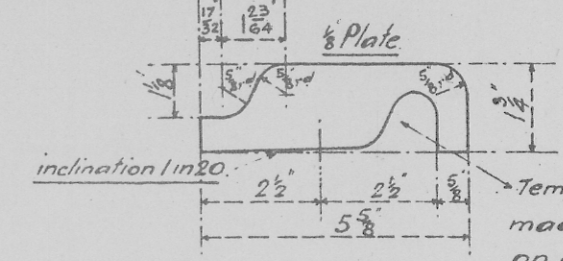
— Axle Wheel Seat. —

④



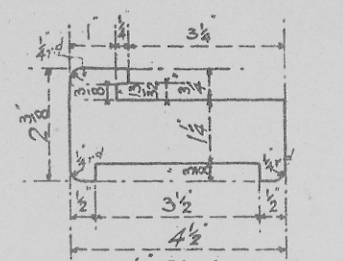
— Tyre Grooves. —  
used in conjunction with  
straight-edge across tyre.

⑤



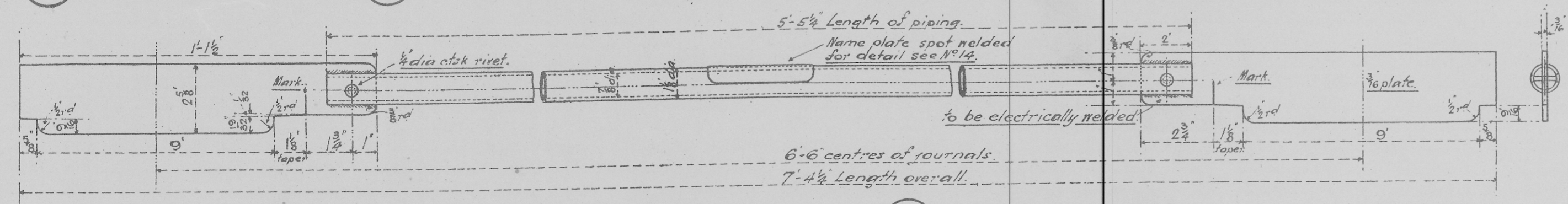
— Tyre Profile. —  
Template to be  
made to dimensions  
on dia. of wheel & axle  
of Tyre Profile. Dg. No. 1020.

⑥



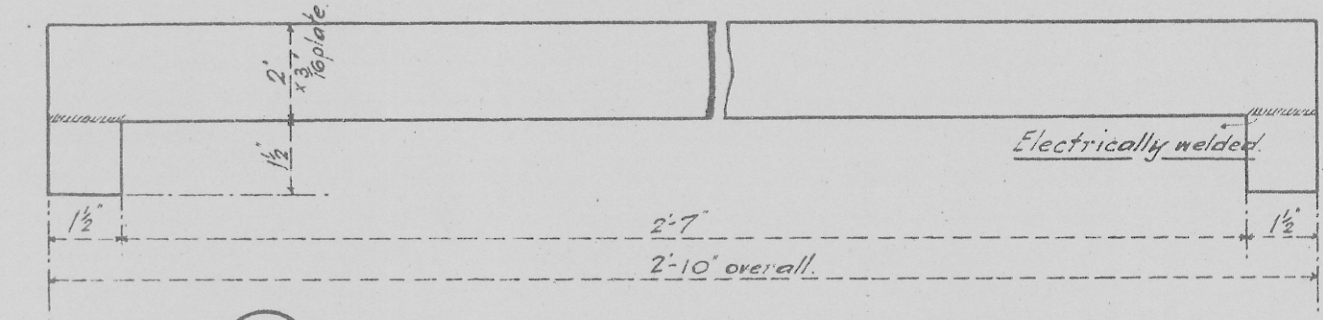
— Wheel Rim. —  
(widths & grooves.)

⑦



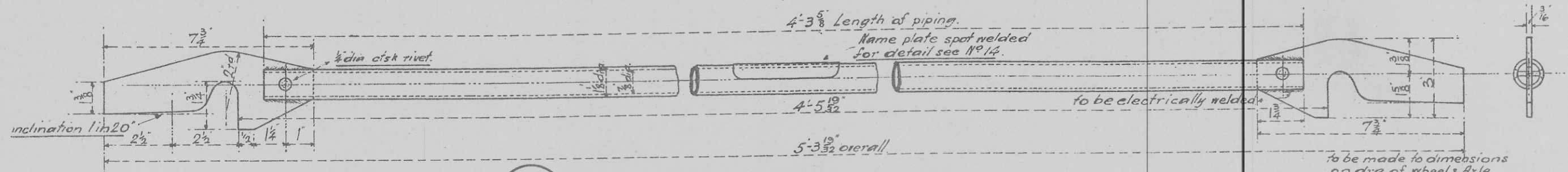
— Axle. —

⑧



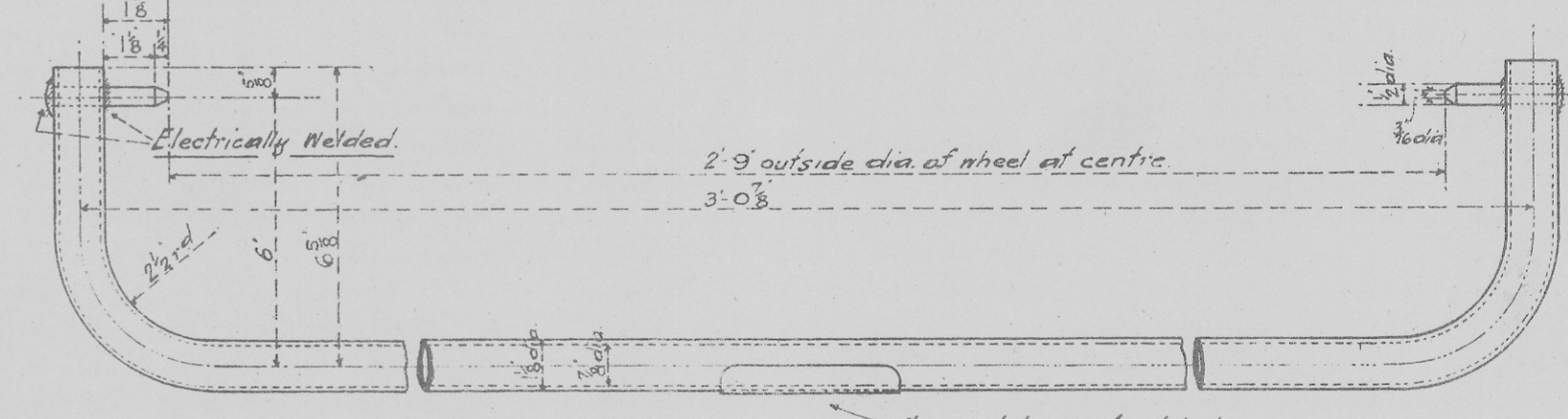
— Gauge for outside face of Boss to Rim. —

⑨



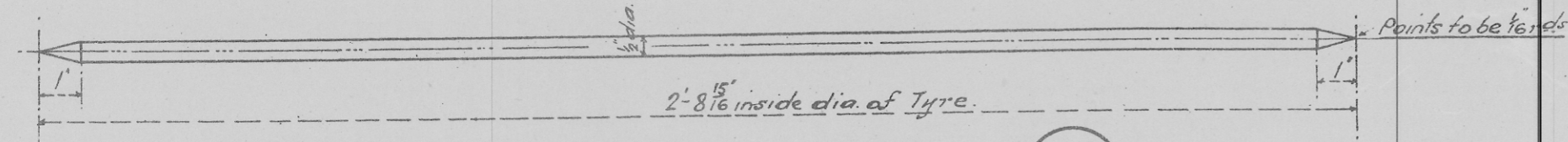
— Gauge between Tyres. —

⑩



— Gauge for wheel Centre. —

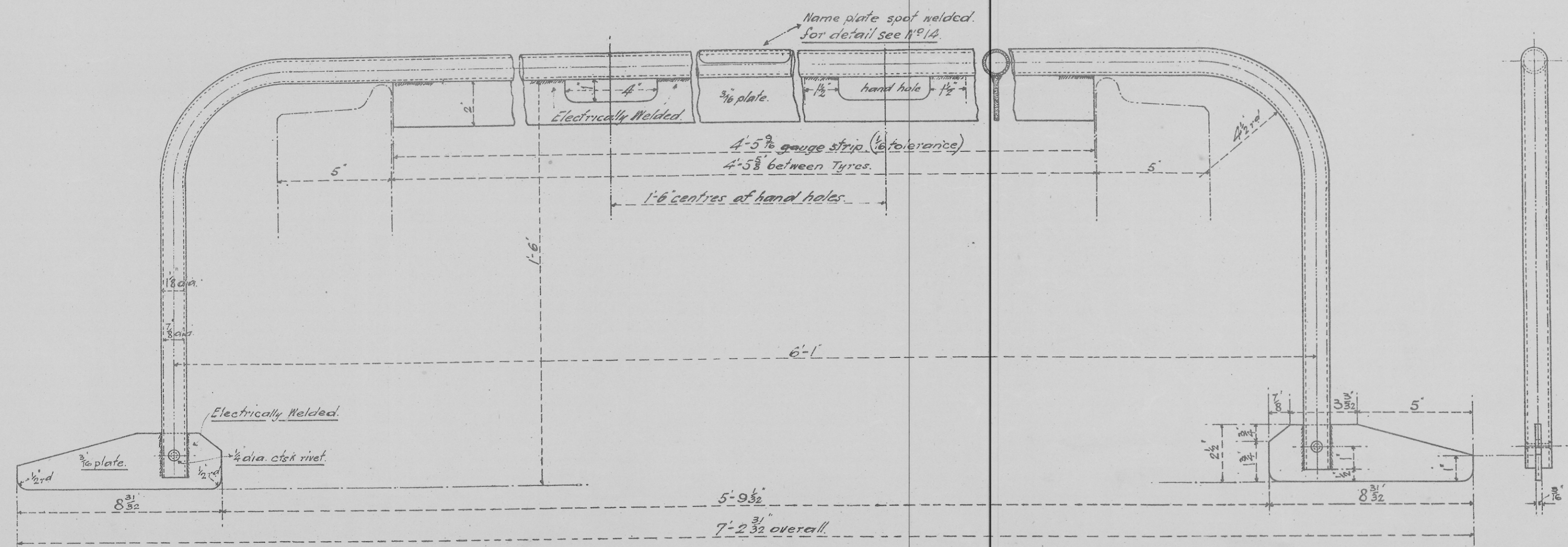
⑫



— Gauge inside Tyre. —

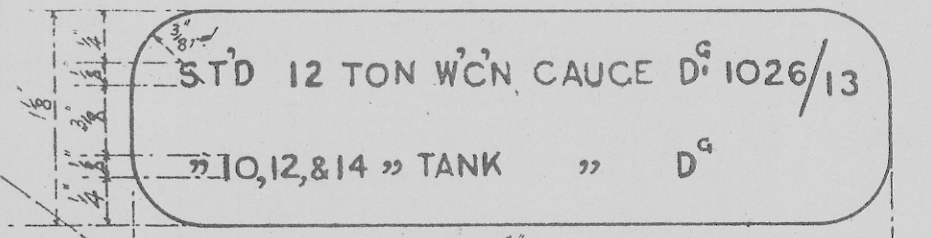
⑪

Note:— Plate Gauges to be clearly stamped  
with designation and number shown hereon.



— Journal & Wheel Tyres. —

⑬



Note:— One of these name plates with the  
correct stroke number as per drawing  
to be spot welded to each of the tube gauges.  
Example shown above is for the  
Journal & Wheel Tyres Gauge.

— Name Plate—full size. —

⑭

— WHEEL & AXLE GAUGES. —

STANDARD 12 TON WAGONS  
AND 10 TON TANK WAGONS.

TEMPLATES & GAUGES.

SCALE:— 3 IN = 1 FOOT.

APRIL 1923.

D<sup>5</sup> N<sup>o</sup> 1026.