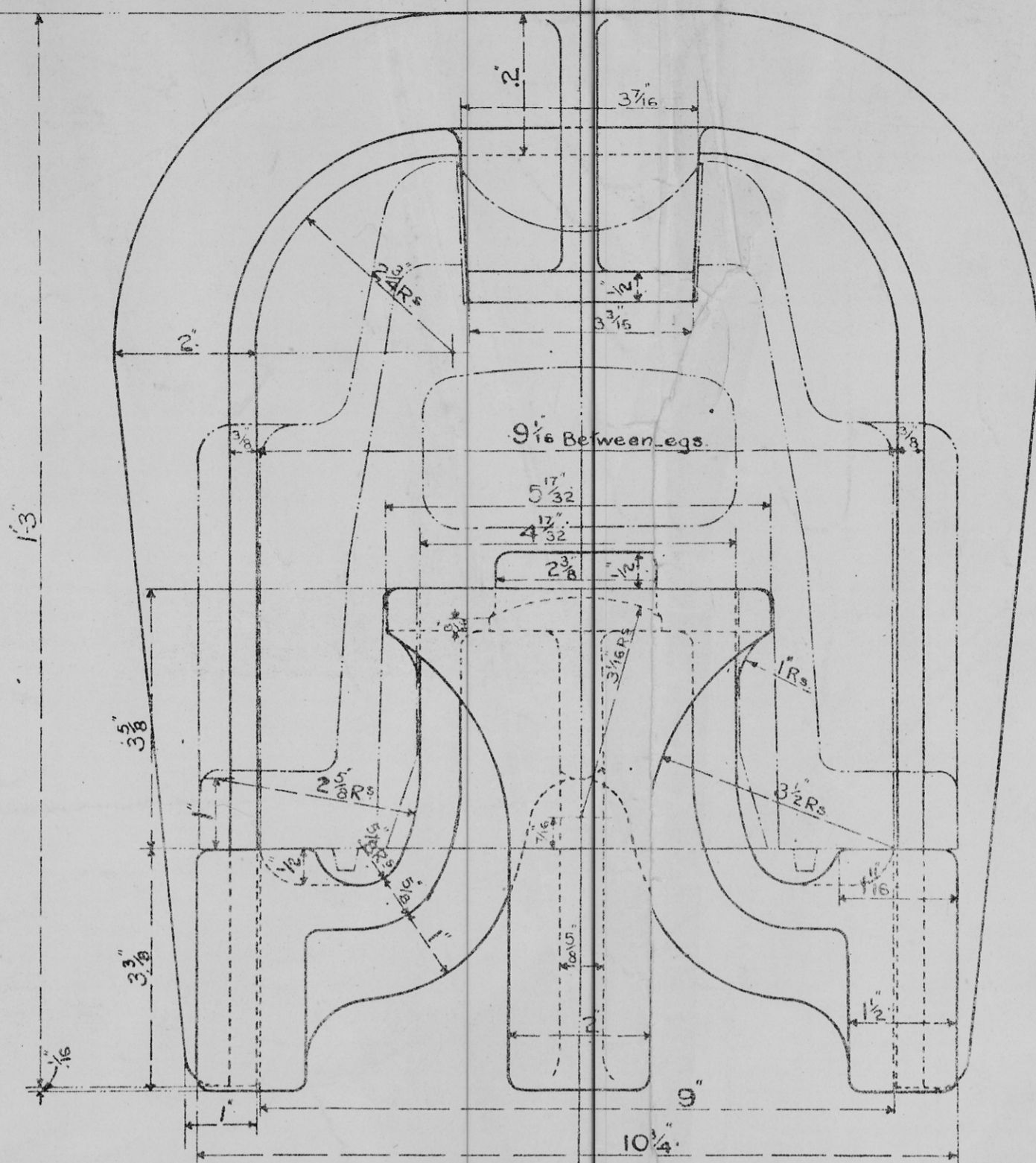


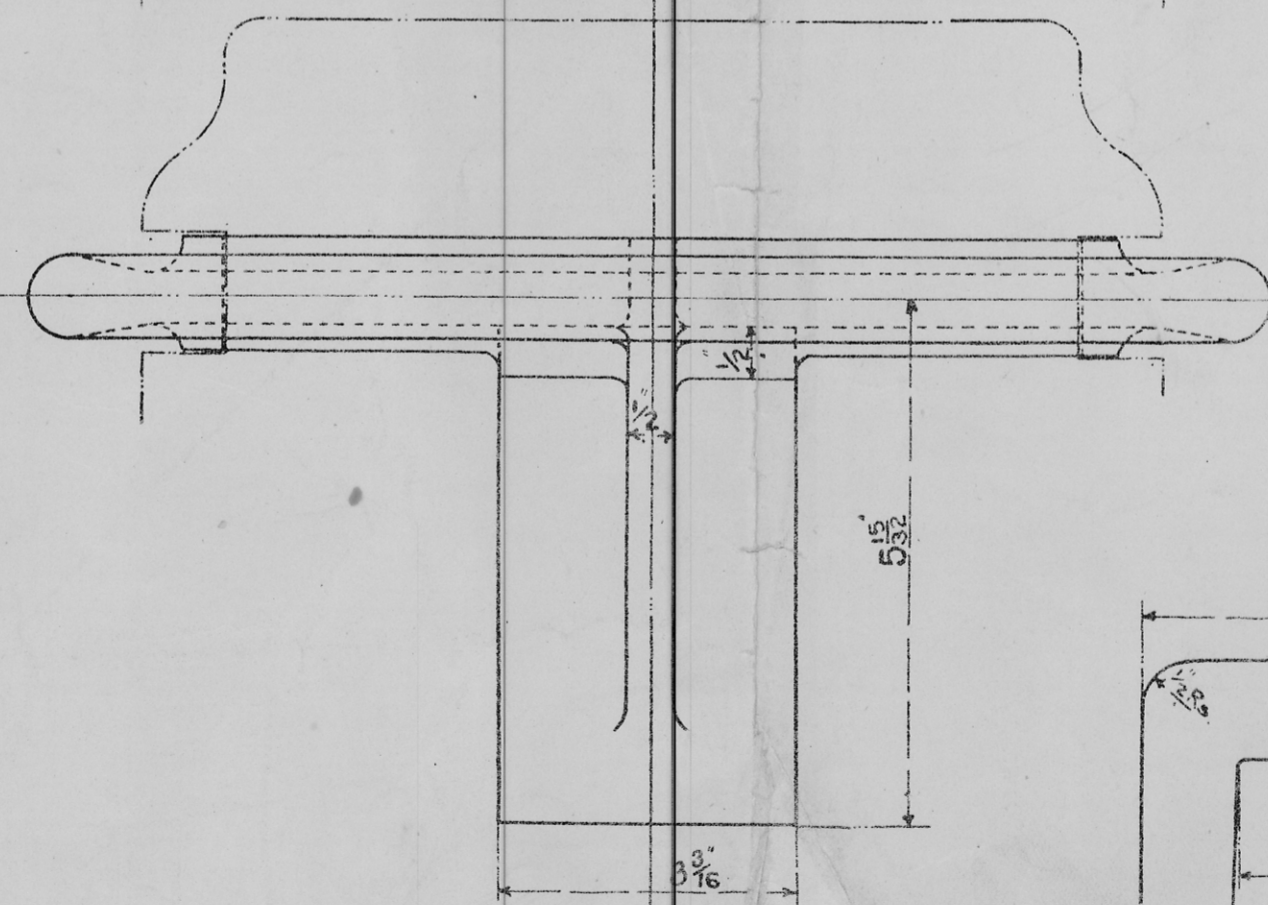
CAST IRON GAUGE FOR POSITION OF  
— BEARING —

①



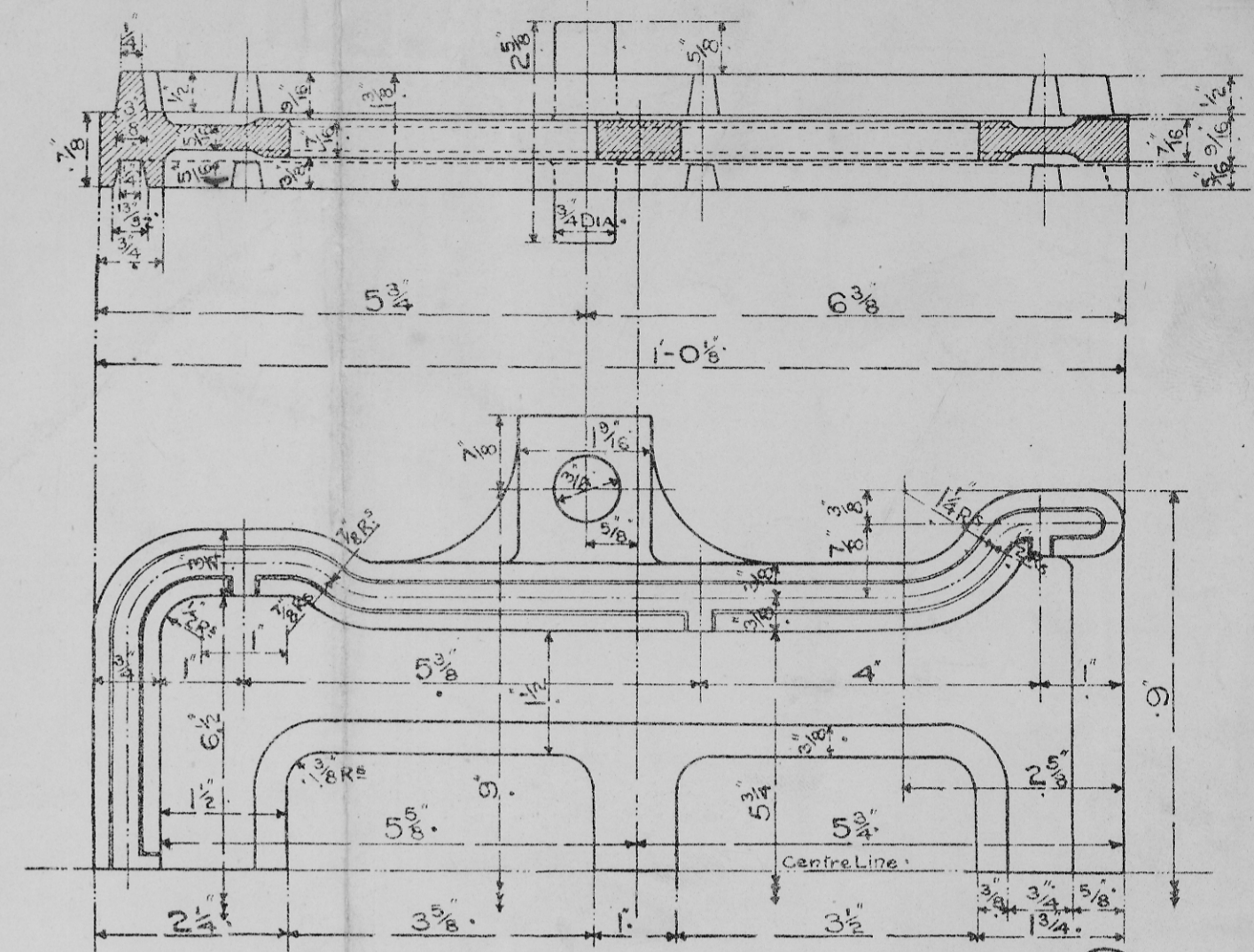
CAST IRON GAUGE FOR AXLE GUARD  
GROOVE & SPRING SEAT.

②



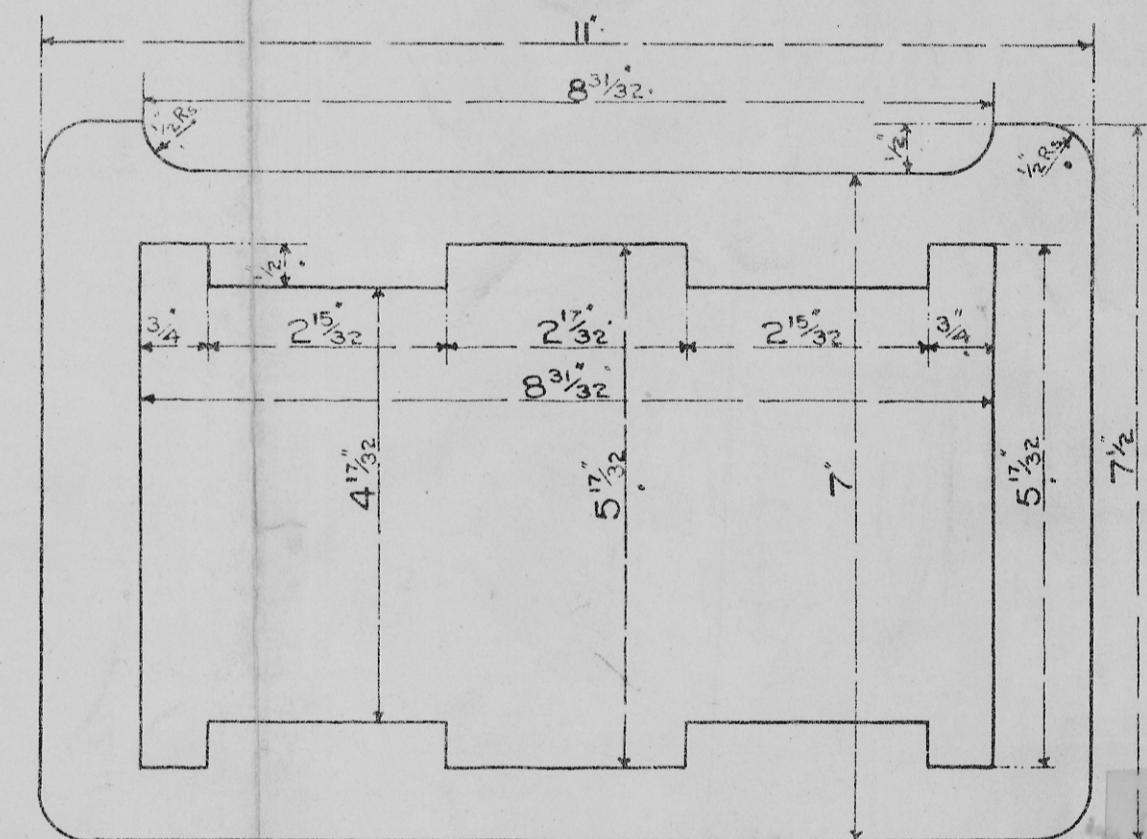
BEARING GAUGE (TRANSVERSE PROFILE)

⑤



JOINT GAUGE FOR TOP & BOTTOM HALVES.

③



BEARING GAUGE (PLAN & LENGTH PROFILES)

④

STANDARD 12 TON WAGONS.  
GAUGES FOR OIL AXLEBOX.  
HALF SIZE  
APRIL 1923. D<sup>S</sup> N<sup>O</sup> 1027