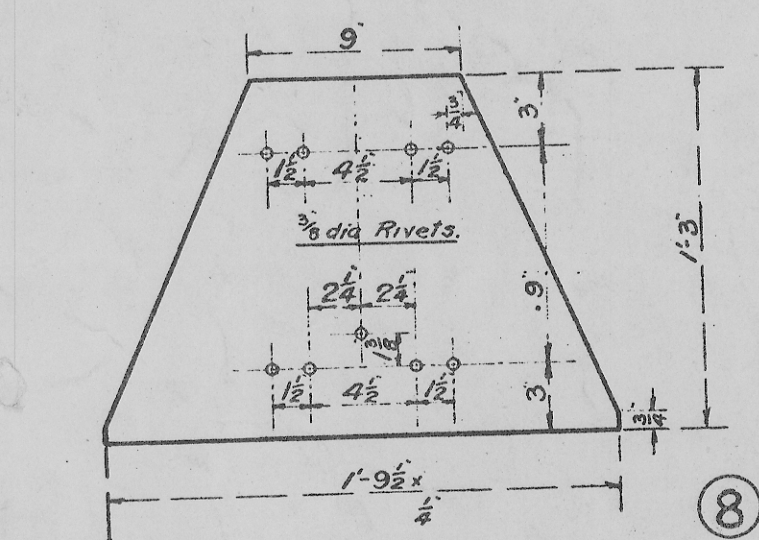
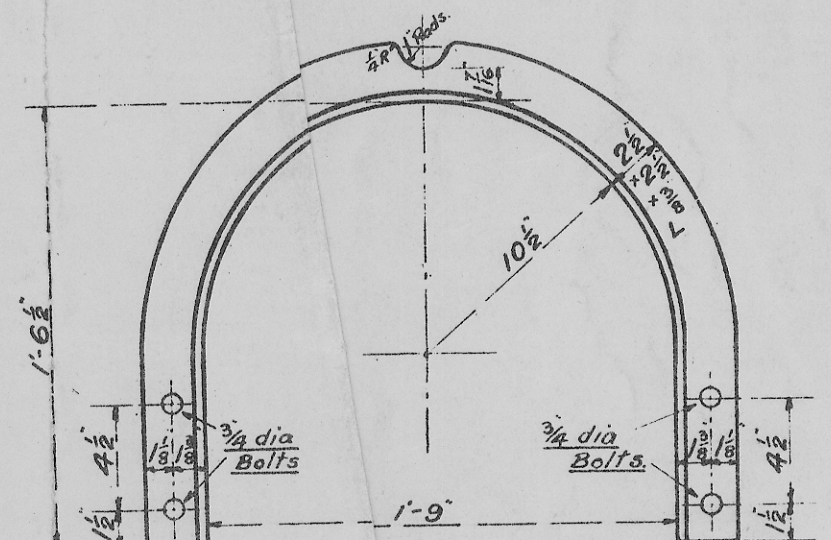


**RIDGE PIPE BENT & WELDED AT ENDS**  
 1 Per Set.  
 Wrought Iron.  
 B.E.S. Grade B.

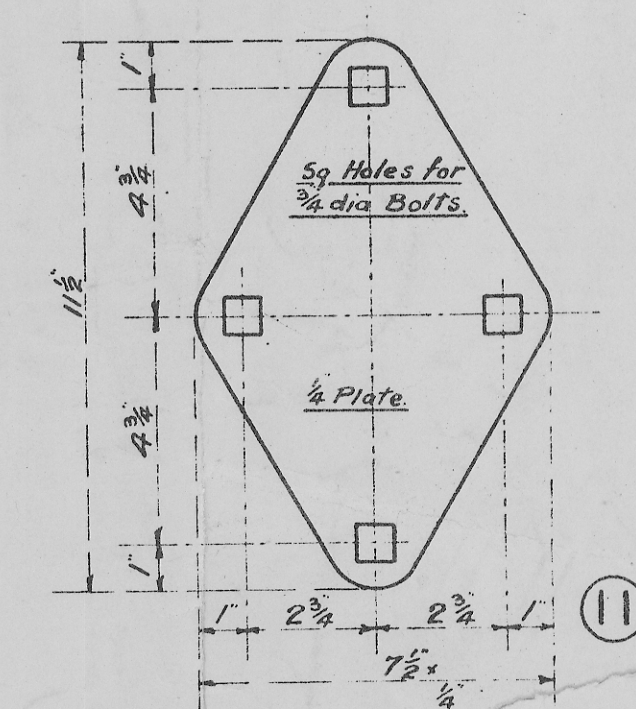
**RIDGE PIPE END**  
 2 Per Set.  
 Wrought Iron.  
 B.E.S. Grade B.



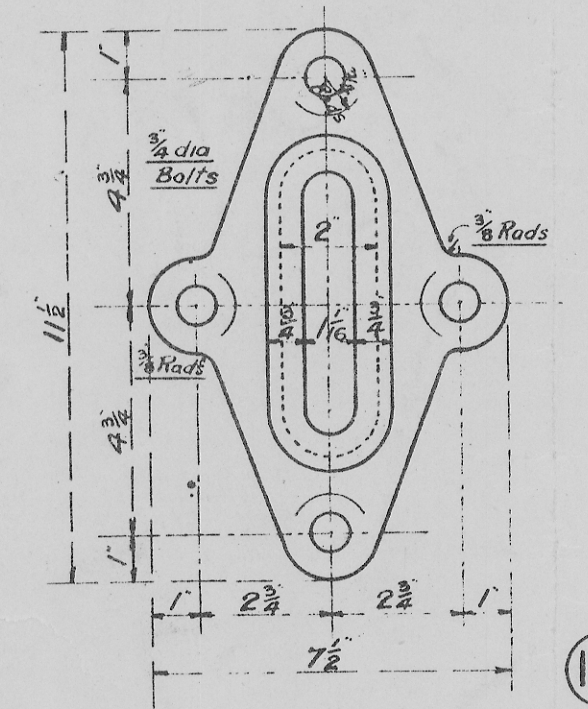
**WEATHER OR SUPPORT PLATE**  
 2 Per Set.  
 Mild Steel or Grade 'B' Iron.



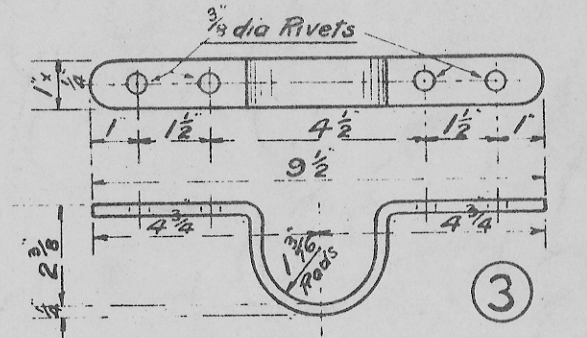
**ANGLE IRON QUADRANT.**  
 2 Per Set.  
 Mild Steel or Grade 'B' Iron.



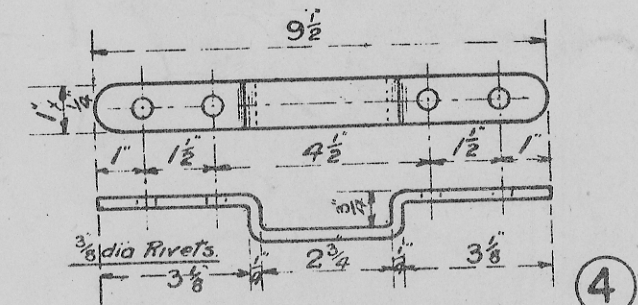
**WASHER PLATE TO FULCRUM BRACKET**  
 2 Per Set.  
 Mild Steel or Grade 'B' Iron.



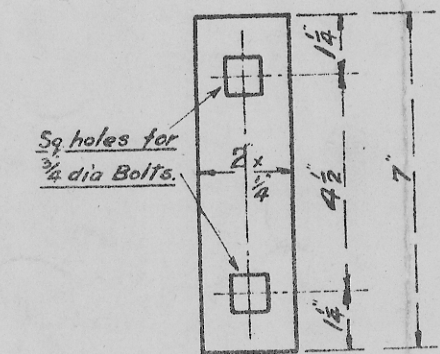
**FULCRUM BRACKET.**  
 2 Per Set.  
 Cast Iron.



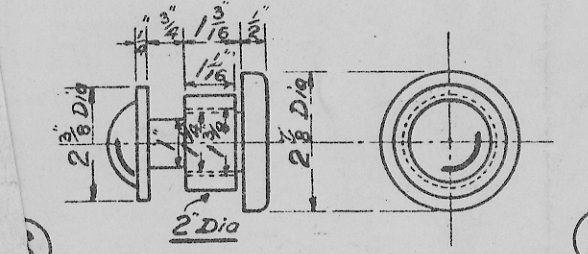
**RIDGE PIPE TOP CLIP**  
 2 Per Set.  
 Mild Steel or Grade 'B' Iron.



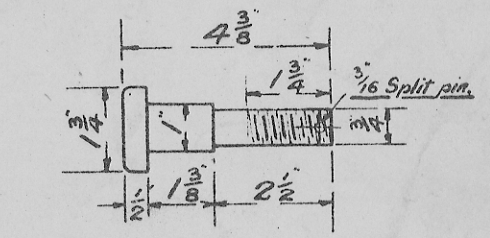
**RIDGE PIPE BOTTOM CLIP**  
 2 Per Set.  
 Mild Steel or Grade 'B' Iron.



**WASHER PLATE TO QUADRANT.**  
 4 Per Set.  
 Mild Steel or Grade 'B' Iron.



**SHOULDERED RIVET. AND ROLLER.**  
 2 Per Set.  
 Mild Steel or Grade 'B' Iron.



**SHOULDERED BOLT.**  
 FULCRUM.  
 2 Per Set.  
 Mild Steel.

**STANDARD 12 TON WAGON  
 ARR<sup>NT</sup> & DETAILS OF SHEET SUPPORT**

**GOODS WAGON  
 SCALE - 1/2" & 3/16" = 1 FOOT**

**JULY 1923 D<sup>O</sup> N<sup>O</sup> 1028**