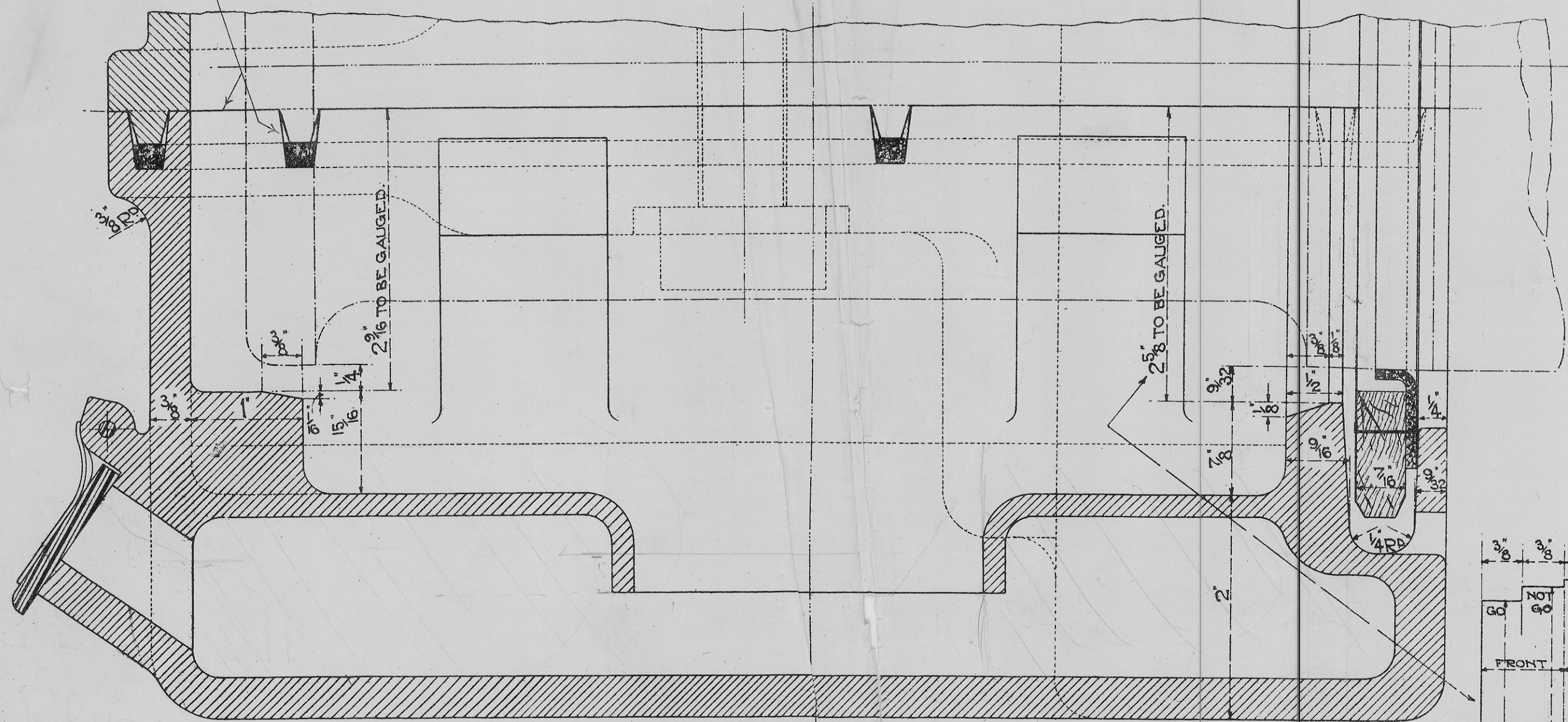
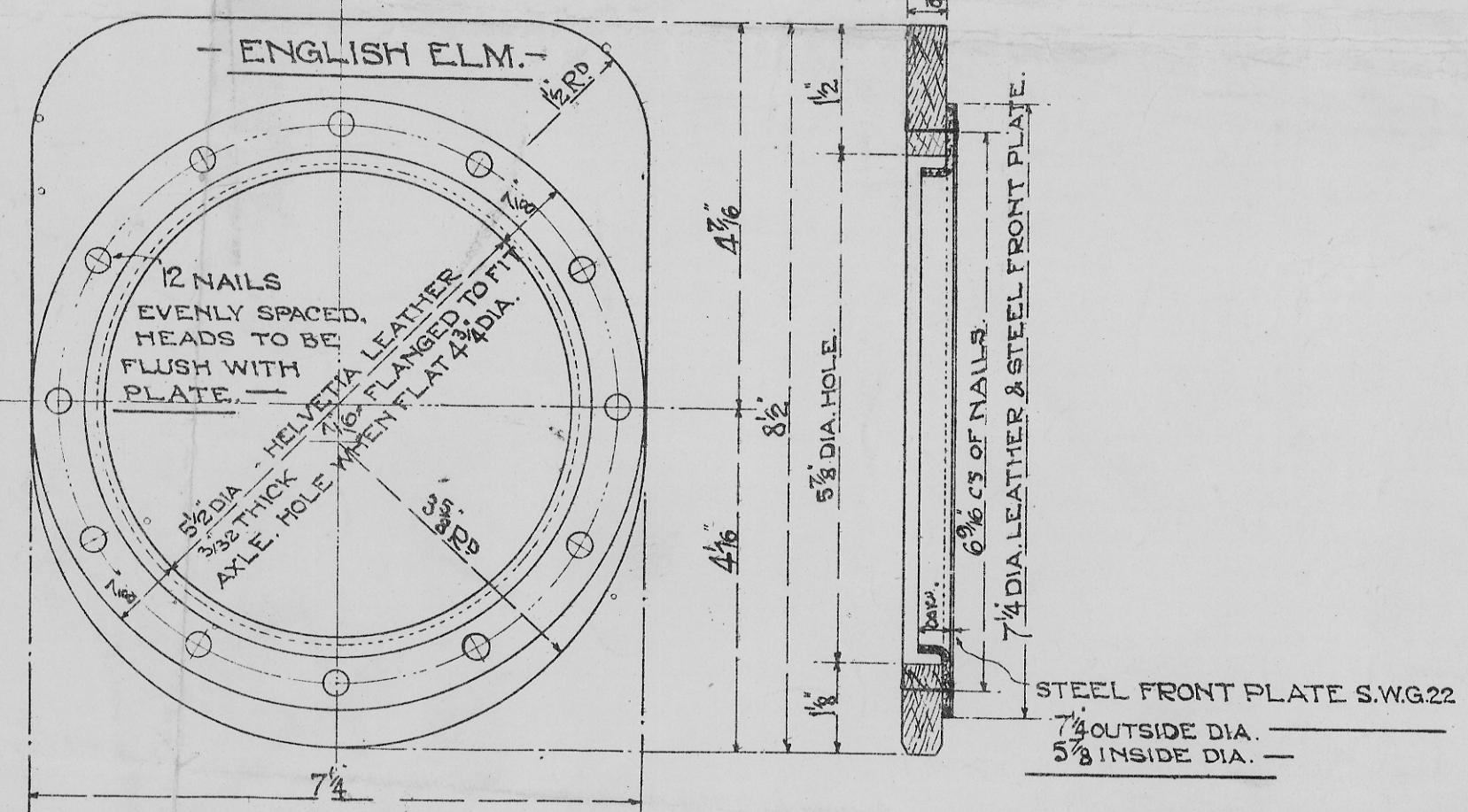
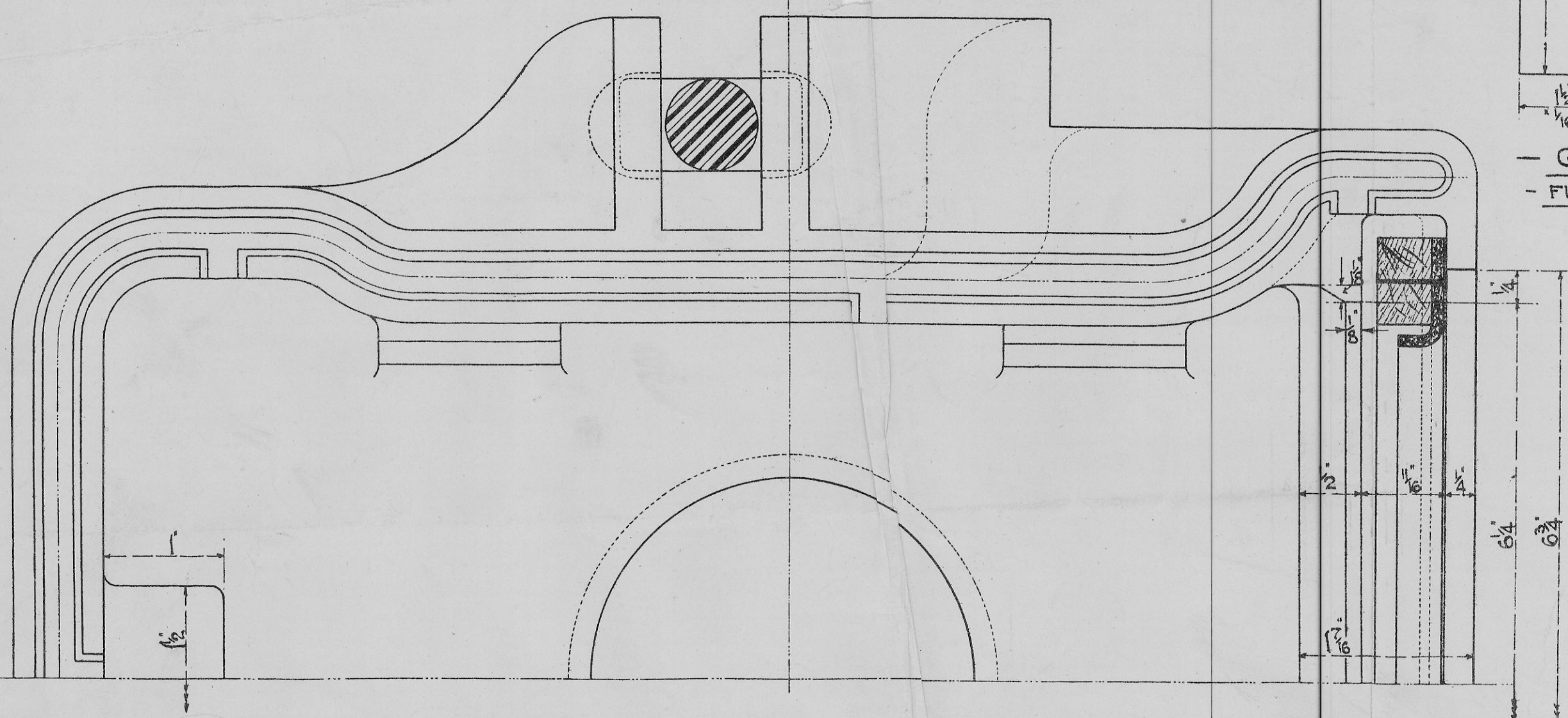
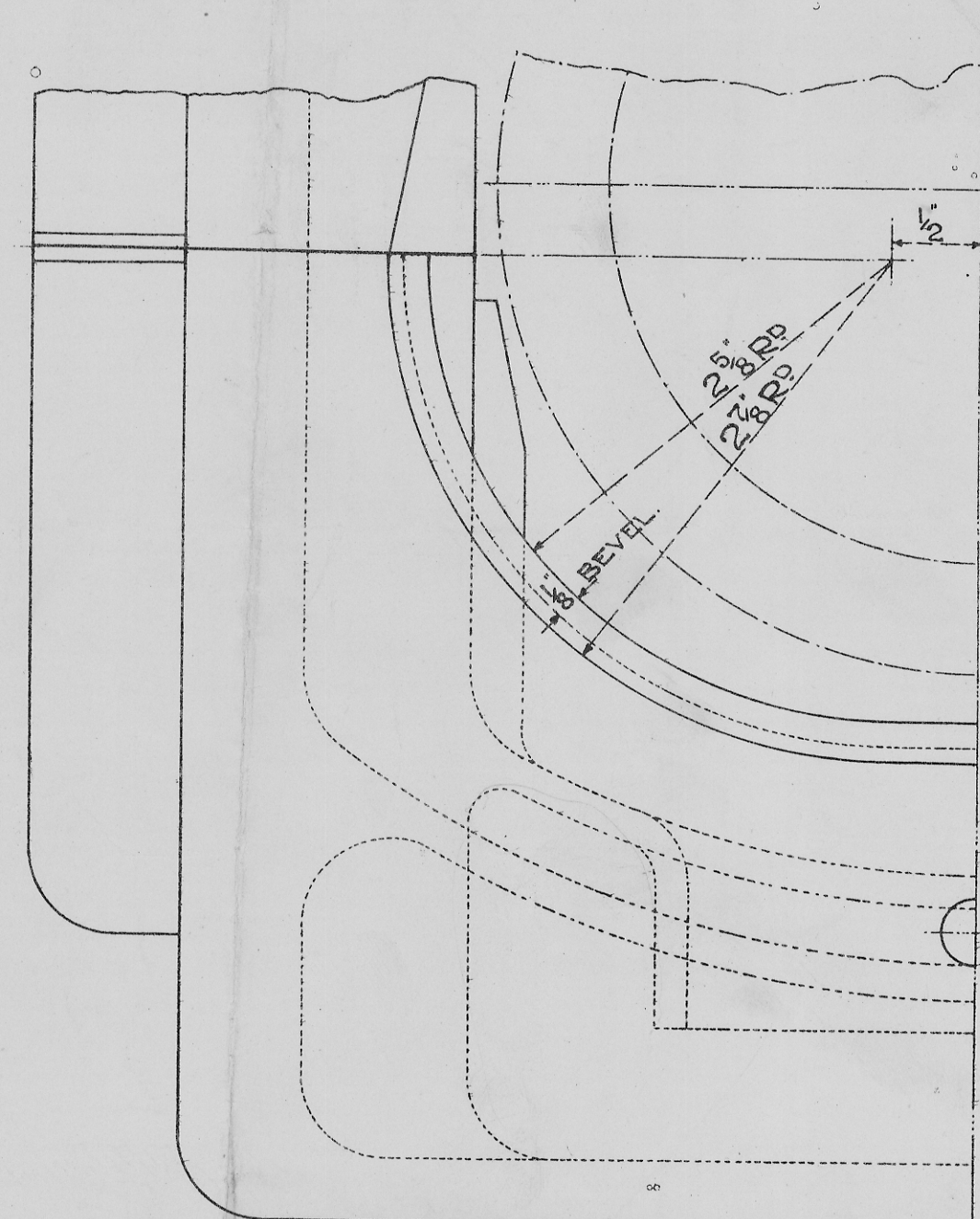


NOTE.—To ensure the joint being watertight the joint packing must be tightly compressed. The faces of the top and bottom halves of the box must be levelled and in tight contact round the bolt holes.



|                  |       |        |        |
|------------------|-------|--------|--------|
| 8                | 8     | 8      | 8      |
| 108°             | 108°  | 108°   | 108°   |
| FRONT            | BACK  | FRONT  | BACK   |
| 2 1/2            | 2 5/8 | 2 1/16 | 2 1/16 |
| 1/16 SHEET STEEL |       |        |        |
| — GAUGE. —       |       |        |        |
| — FULL SIZE. —   |       |        |        |



— DUST SHIELD — HALF SIZE. —

— STANDARD 12-TON WAGON. —

— Modification of bottom half of Oil Axlebox —  
— Drawing No. 1019. —

— FULL AND HALF SIZE. —

— MARCH 19 25. —

— D<sup>G</sup> N<sup>O</sup> 1030. —

NOTE.—This bottom is interchangeable with that shown on Drawing 1019 and must be used on all new boxes and for replacements of existing bottoms when necessary. In the case of renewals, existing steel dust shields may be used (provided the bottom spring of the dust shield is removed), or they may be replaced by the shield shown hereof at Owner's option.

This bottom also interchanges with that shown on Drawing 1022, and may be used in place thereof. A new drawing embodying these alterations and superseding Drawing 1019 will be issued shortly.