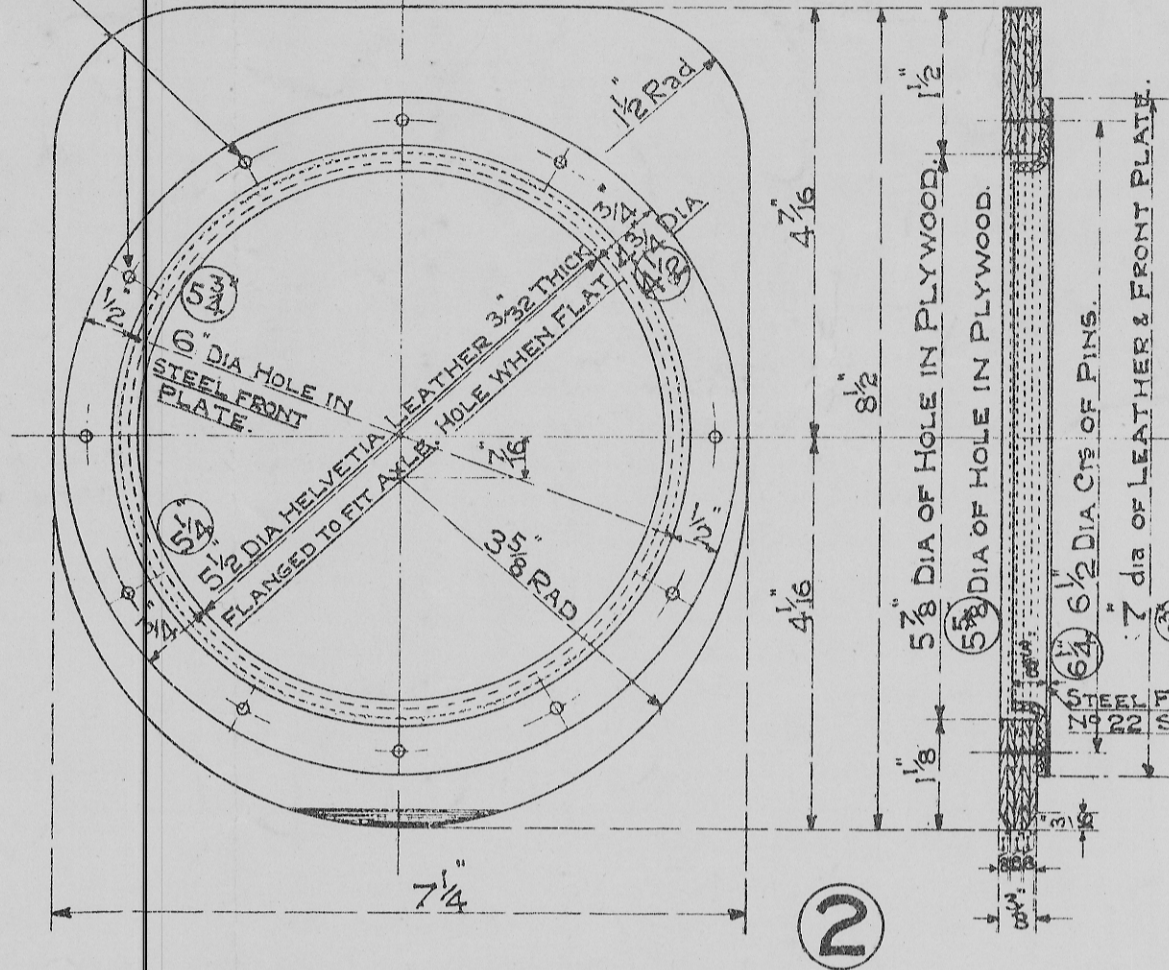


- STANDARD 12 TON WAGON & 10, 12 OR 14 TON TANK WAGONS. - **1**
 - 9" x 4 1/4" OR 4 1/2" JOURNALS. - LUBRICATING PAD. -

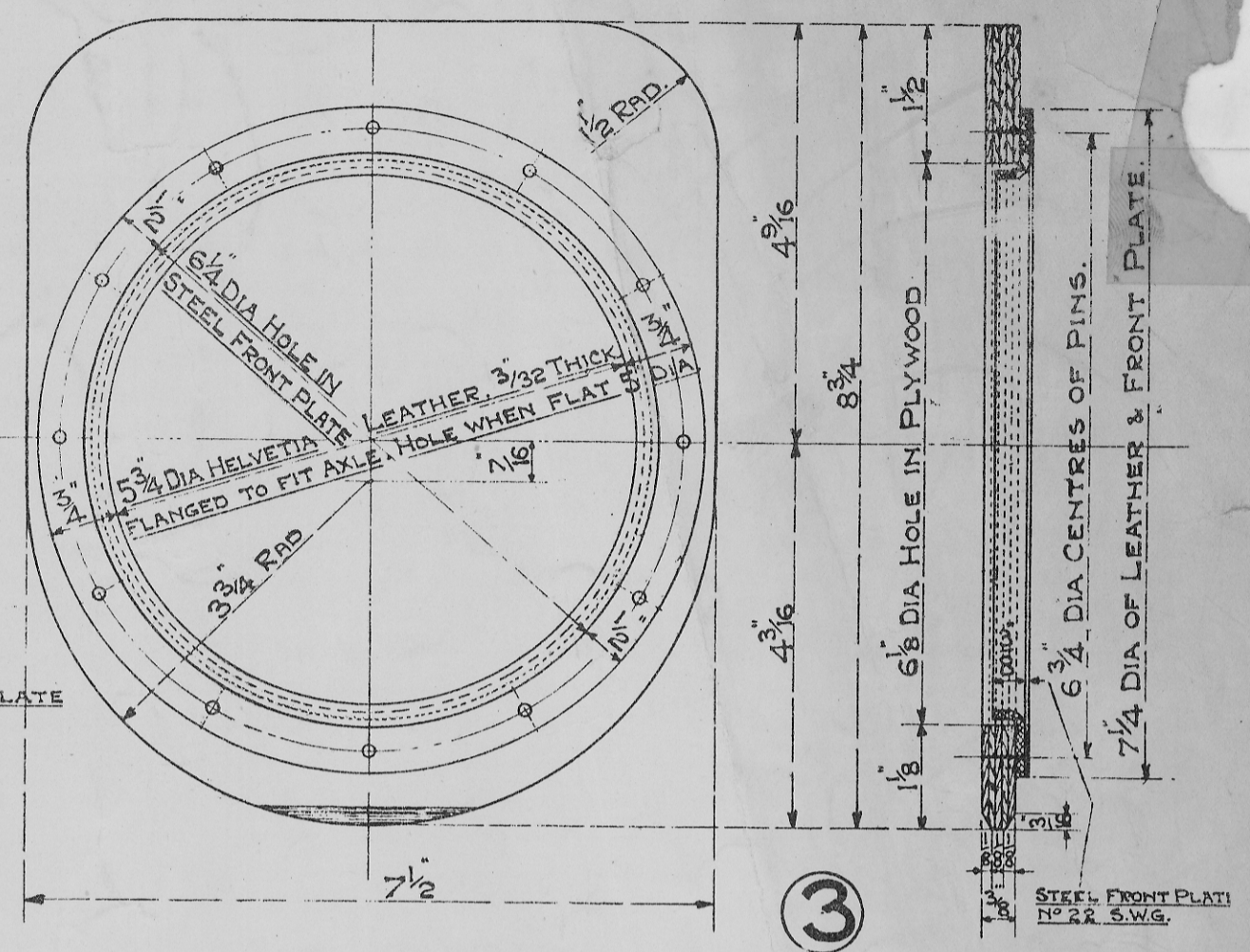
12 PANEL PINS 5/8 LONG, EVENLY SPACED, HEADS TO BE FLUSH WITH PLATE & POINTS TO BE CLINCHED.



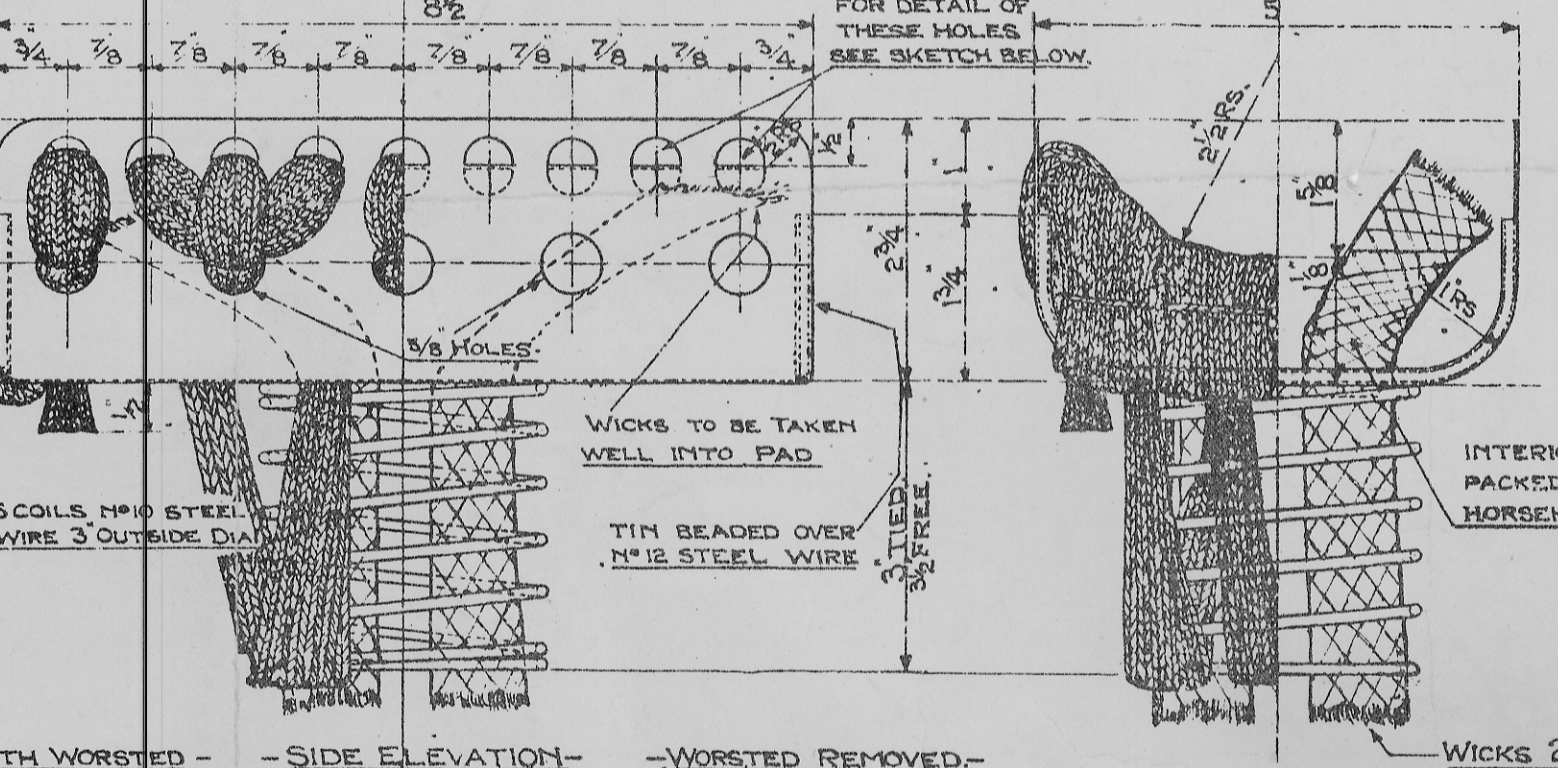
- STANDARD 12 TON WAGON -
 - FIVE PLY DUST SHIELD HALF SIZE. - **2**

NOTE: THIS SHIELD ALSO TO BE USED FOR STANDARD 8 & 10 TON WAGON AXLE BOXES, DRG 189 WITH THE EXCEPTION THAT RINGED DIMENSIONS MUST BE WORKED TO, ALL OTHERS REMAIN UNALTERED.

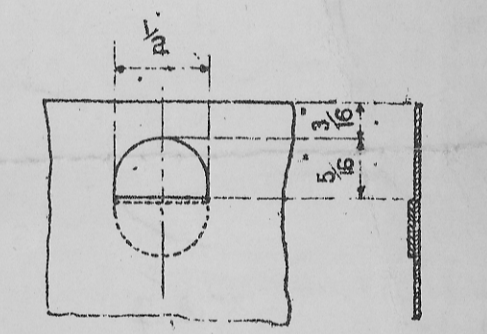
12 PANEL PINS 5/8 LONG, EVENLY SPACED, HEADS TO BE FLUSH WITH PLATE & POINTS TO BE CLINCHED.



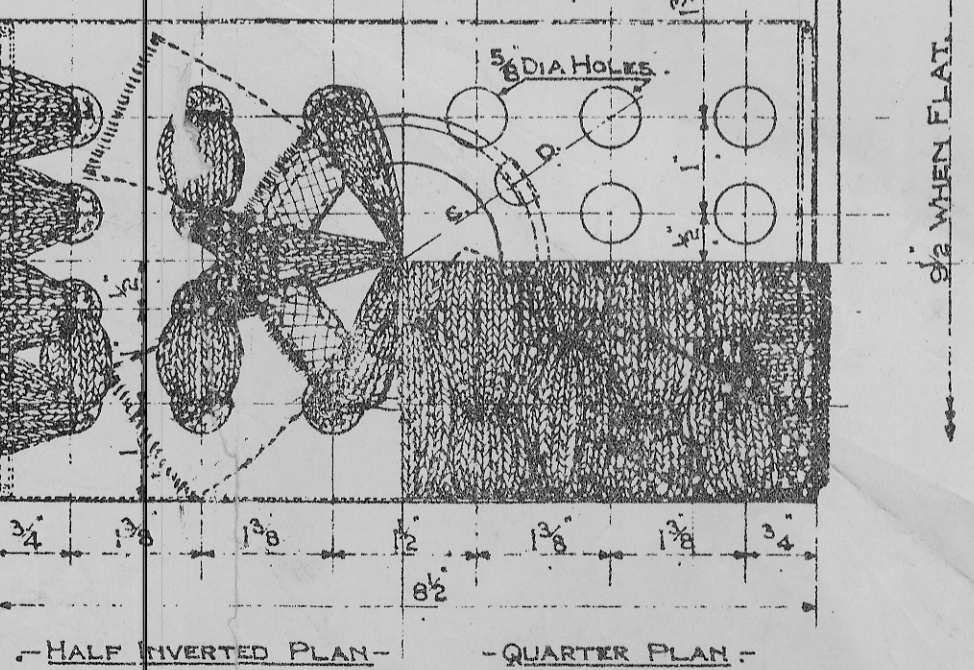
- STANDARD 12 & 14 TON TANK WAGONS -
 - FIVE PLY DUST SHIELD - HALF SIZE. - **3**



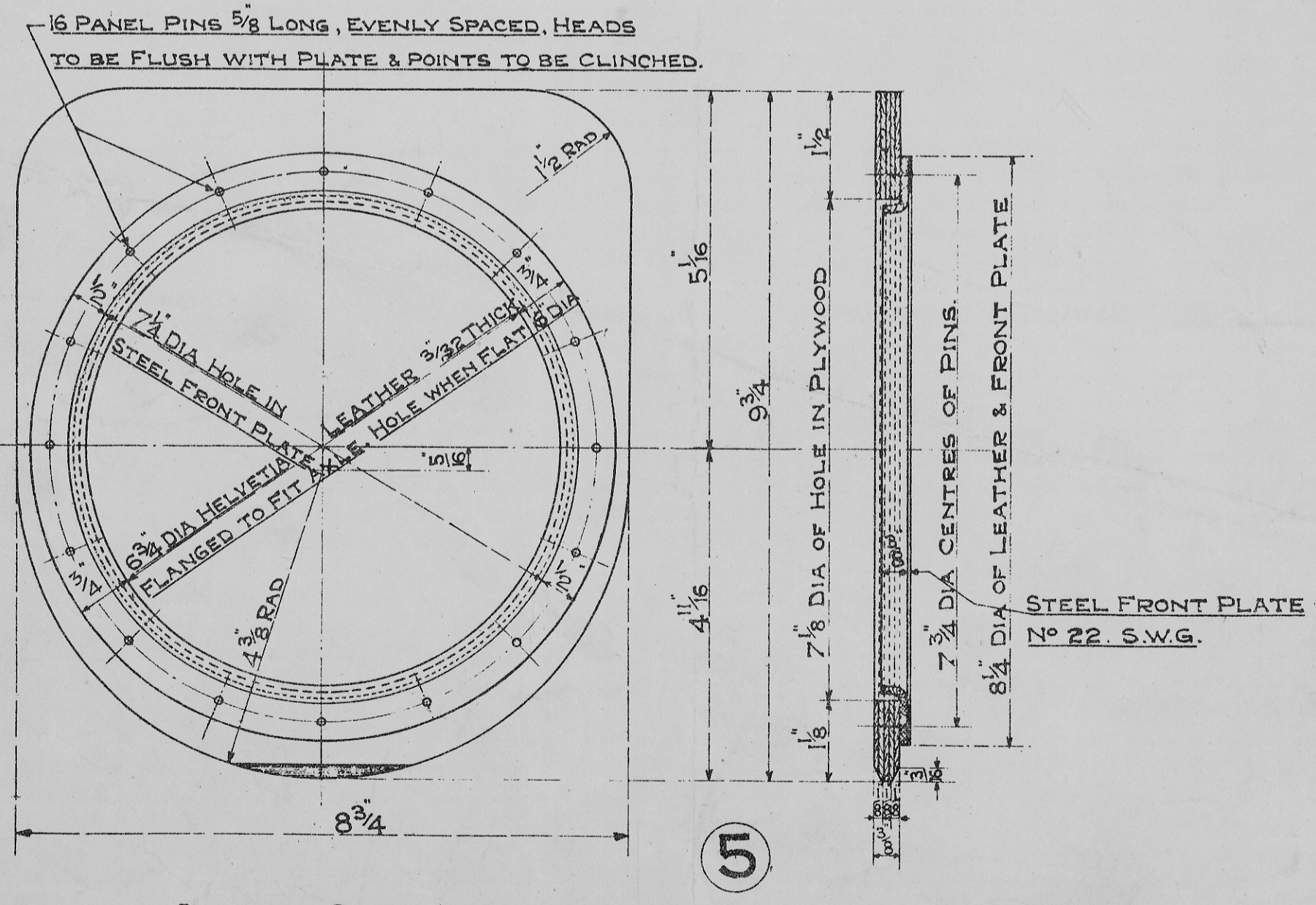
- WITH WORSTED - SIDE ELEVATION - WORSTED REMOVED -



DETAIL FOR TOP ROW OF HOLES IN SIDE ELEVATION. - FULL SIZE. -



- HALF INVERTED PLAN - QUARTER PLAN -
 - STANDARD 20 TON MINERAL WAGON OR 20 TON TANK WAGON. -
 - 10" x 5" JOURNALS. - LUBRICATING PAD. - **4**



- STANDARD 20 TON MINERAL & TANK WAGONS -
 - FIVE PLY DUST SHIELD - HALF SIZE - **5**

NOTE: DUSTSHIELDS, ITEMS 2, 3 & 5, TO BE OF BIRCHWOOD 5 PLY OR EQUAL QUALITY & CEMENT USED IN THE MANUFACTURE OF PLYWOOD MUST BE INSOLUBLE IN LUBRICATING OIL. - PRESSURE OF LUBRICATING PADS AGAINST JOURNALS NOT TO BE LESS THAN 5 LBS. NOR MORE THAN 6 LBS.

STANDARD MINERAL, GOODS AND TANK WAGONS. LUBRICATING PADS AND DUST SHIELDS FOR AXLEBOXES. HALF SIZE.