

LIMITS OF CRADLE MOVEMENT.

20 TON ORDY. TANKS. 1 1/8"
10, 12 & 14 TON ORDY. & 20 TON SULPHURIC TANKS (METAL FRAME) WITH 9'-0" WHEELBASE. 1/4"

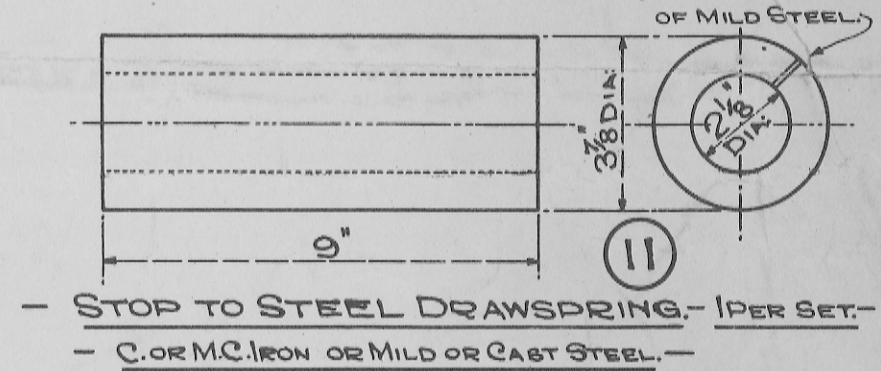
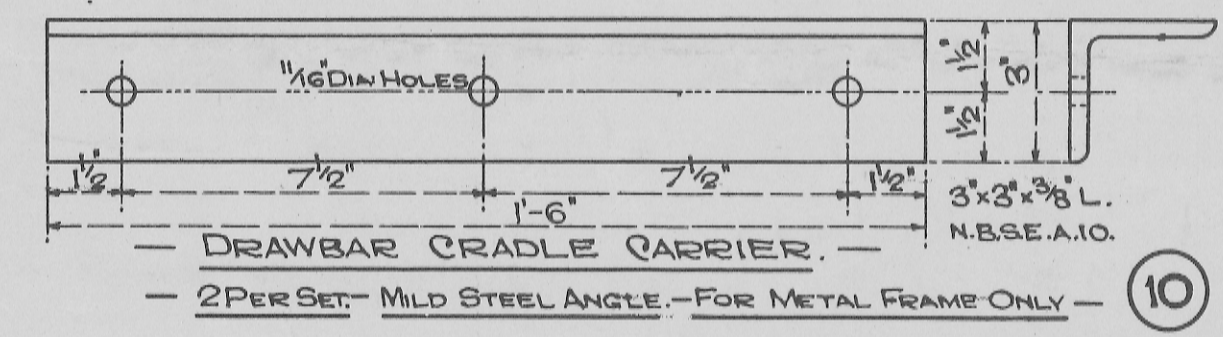
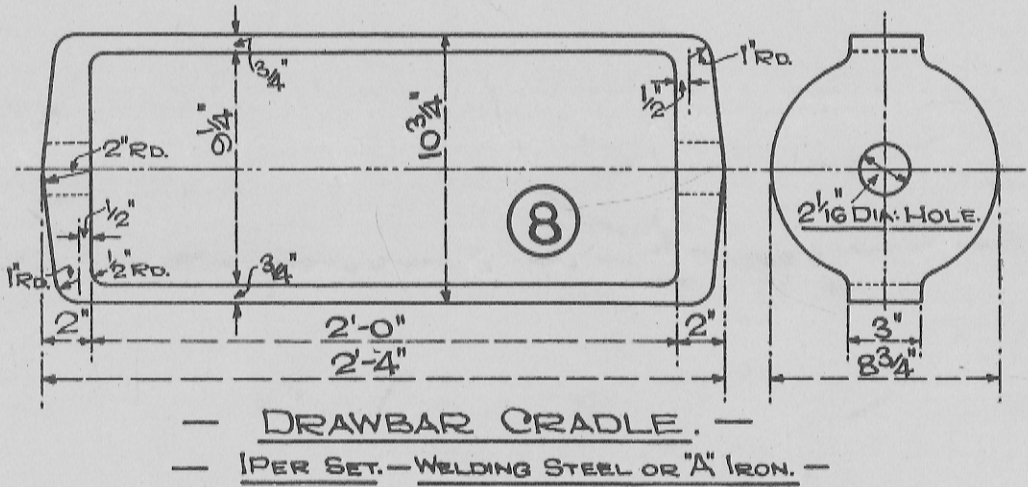
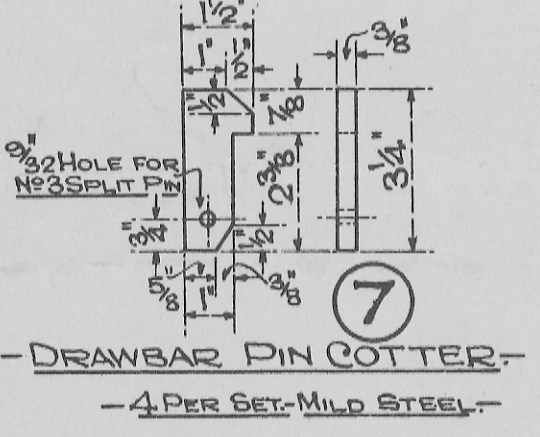
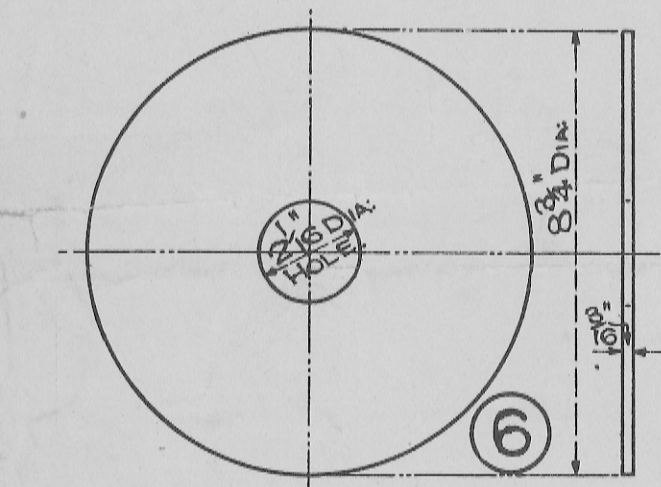
20 TON SULPHURIC ACID TANK (TIMBER FRAME 9'-0" WHEELBASE) 1/2"

10, 12 & 14 TON ORDY. & 20 TON SULPHURIC TANKS WITH 10'-0" WHEELBASE. 1"

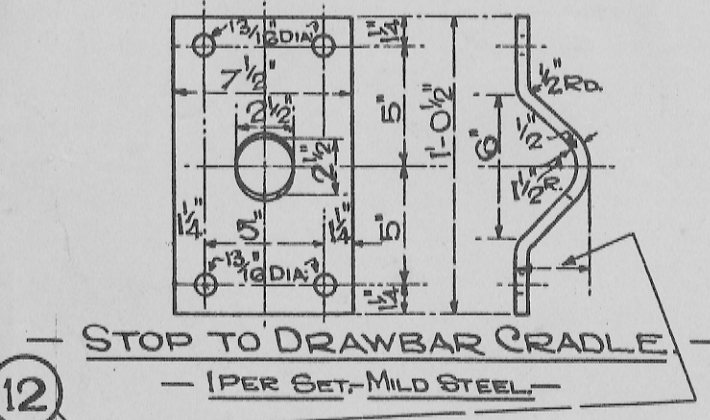
20 TON ORDY. TANKS. 5/16"
10, 12 & 14 TON ORDY. & 20 TON SULPH. TANKS (METAL FRAME) WITH 9'-0" WHEELBASE. 3/8"

20 TON SULPHURIC ACID TANK (TIMBER FRAME 9'-0" WHEELBASE) 1 1/8"

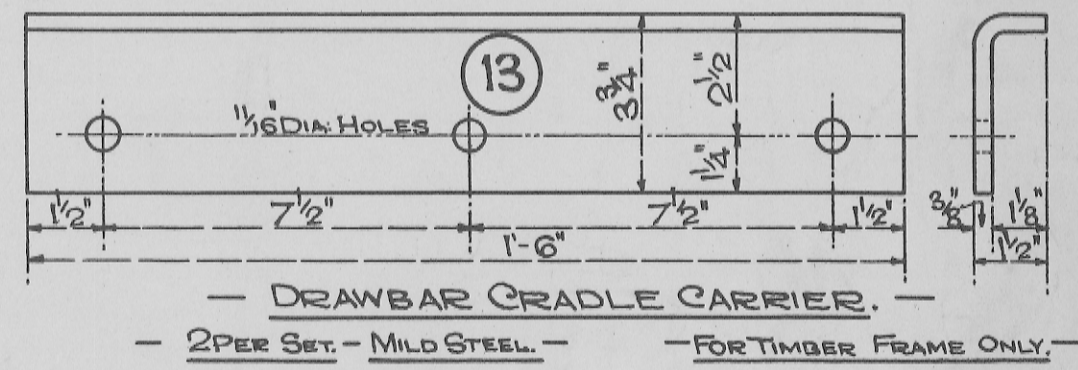
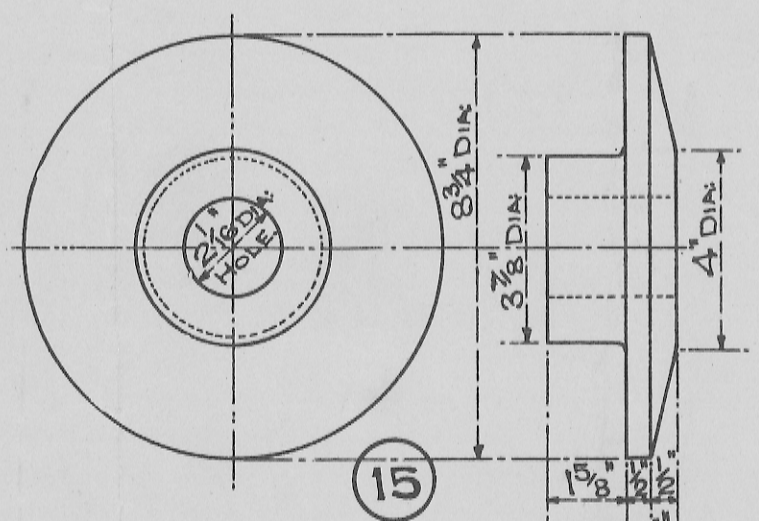
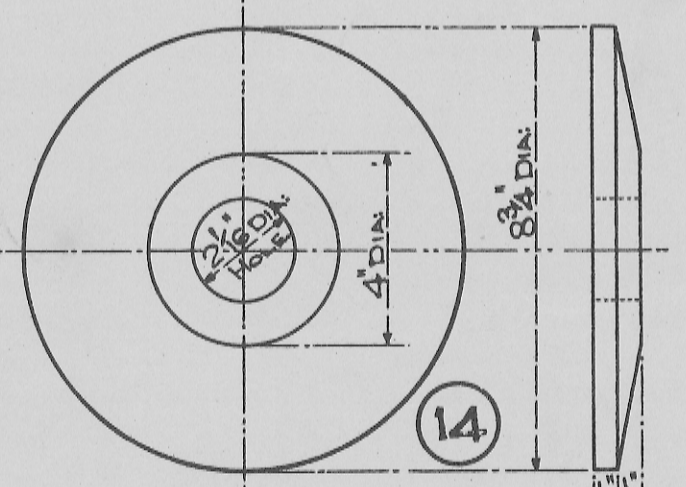
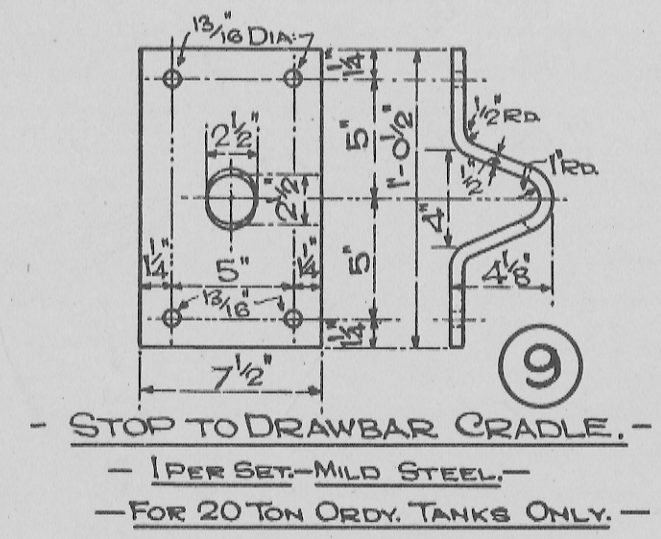
10, 12 & 14 TON ORDY. & 20 TON SULPHURIC TANKS WITH 10'-0" WHEELBASE. 1"



— I.R. SPRING DIVIDING PLATE. —
— 2 PER SET — MILD STEEL OR 'B' IRON. —



— 3/8" FOR 10, 12 & 14 TON TANKS METAL FRAME — 9'-0" WHEELBASE. —
— 3/8" FOR 20 TON SULPHURIC TANKS METAL FRAME — 9'-0" WHEELBASE. —



NOTE: ITEMS 2, 2A, 3, TO BE OF STEEL, B.S.I. REPORT 24 - PART 4 - 1930 - SPEC. 8 - CLASS C (32-38 TONS TENSILE) OR BASIC OPEN HEARTH STEEL WHICH COMPLIES WITH CLASS 'C' TESTS. TO BE MADE WITHOUT WELDS, AND NORMALISED.

NOTE: ALL HOLES TO BE DRILLED UNLESS OTHERWISE STATED.

— STOP TO DRAWBAR CRADLE. —
— 9" x 3 1/8" x 42" C — N.B.S.C. 10. —
— 1 PER SET. — 9'-0" WHEELBASE. —
— 2 PER SET. — 10'-0" WHEELBASE. —
10, 12 & 14 TON ORDY. TANKS WITH METAL FRAMES & 20 TON SULPHURIC ACID TANKS WITH METAL FRAMES.

DETAILS OF DRAWGEAR.
STANDARD WAGONS.

SCALE: 1 1/2, 3 & 6 INS. TO 1 FT.