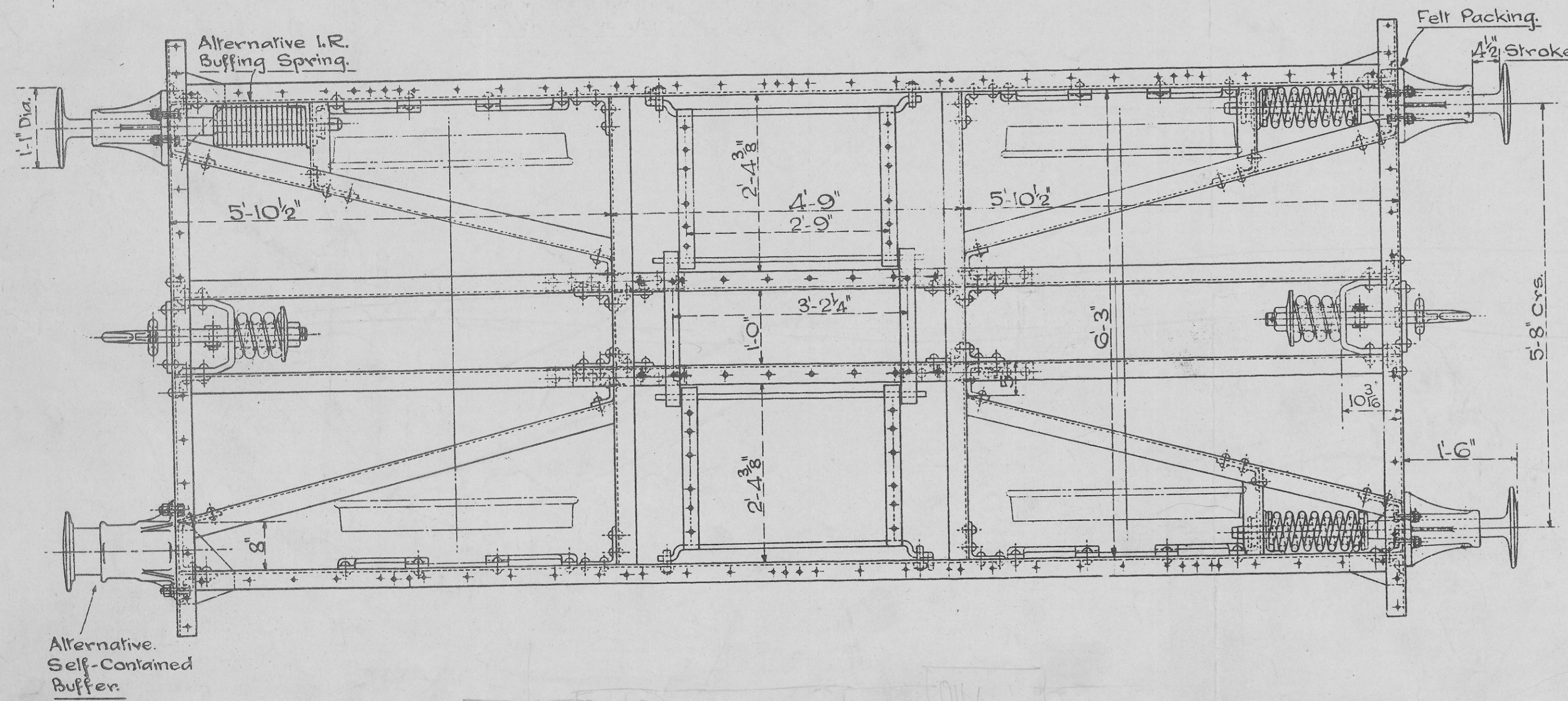


Note:- All members to be 9" x 3 1/8" x 7/16" L except diagonals which are 7" x 3 1/2" x 3/8" L.



STANDARD 12 & 13-TON MINERAL WAGONS
ARRANGEMENT OF METAL UNDERFRAME.

SCALE: - 3/4 IN. TO 1 FT.

DECEMBER, 1944.

D^c No. 1400.