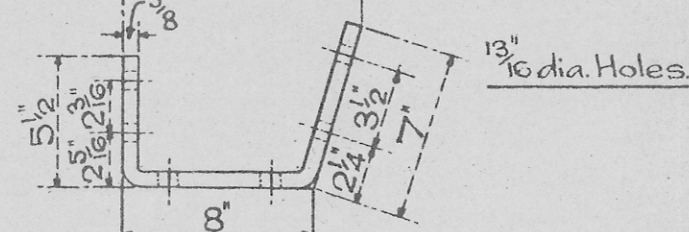
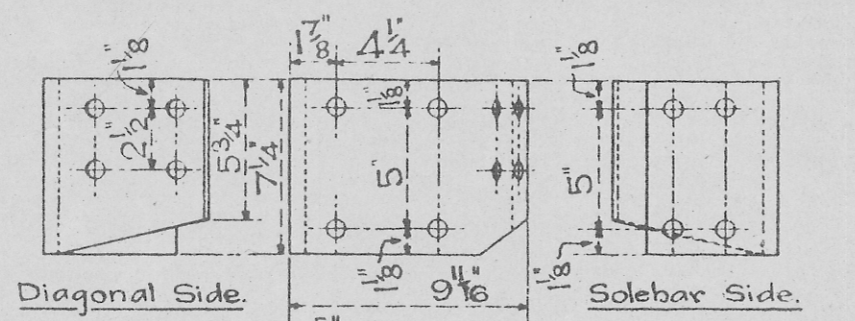


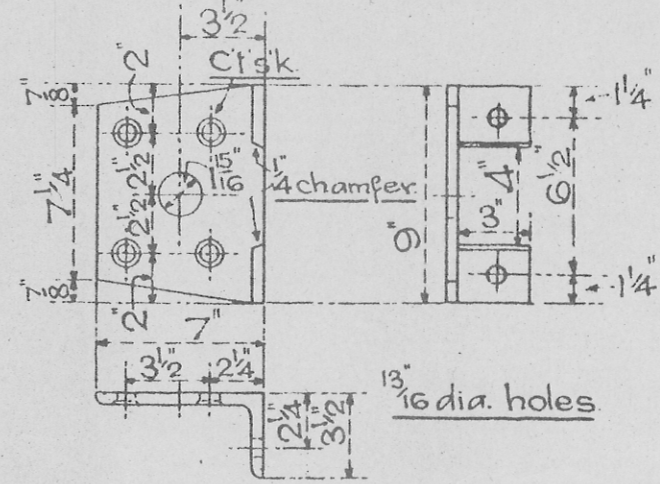
**1 SOLE, HEADSTOCK & DIAGONAL KNEE.**

for Ordinary Buffers.  
4 per set R.&L. Mild Steel or Gde. B' Iron.



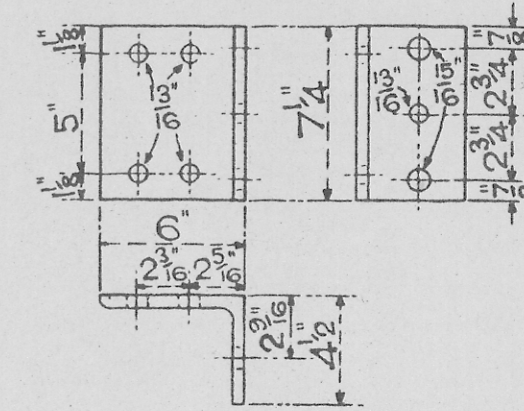
**2 SOLE, HEADSTOCK & DIAGONAL KNEE.**

for Self Contained Buffers.  
4 per set R.&L. Mild Steel or Gde. B' Iron.



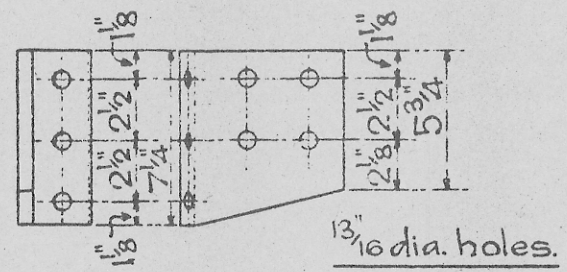
**3 SOLE & TRIMMER KNEE 'A'.**

not required with Self Contained Buffer.  
4 per set. 7" x 3 1/2" x 1/2" L. B.S.U.A. 118.



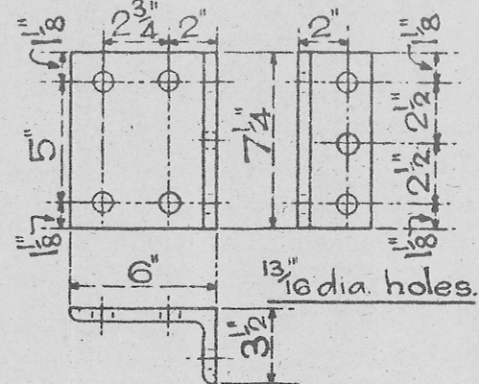
**4 SOLE & HEADSTOCK KNEE.**

for Self Contained Buffers only.  
4 per set. 6" x 4 1/2" x 1/2" L. cut from 6" x 6" x 1/2" L. B.S.E.A. 118.



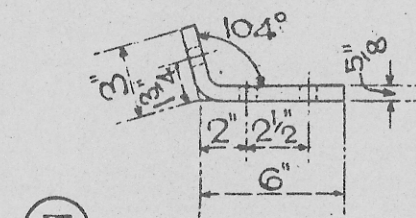
**6 LONGITUDINAL & CROSSBAR GUSSET PLATE.**

4 per set. Mild Steel or Grade B' Iron.



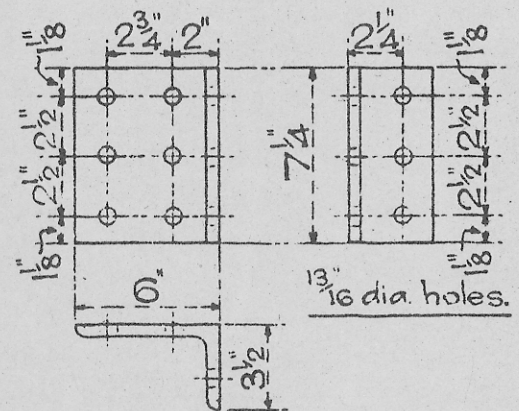
**7 CROSSBAR & LONGITUDINAL KNEE.**

8 per set. 6" x 3 1/2" x 1/2" L. B.S.U.A. 116.



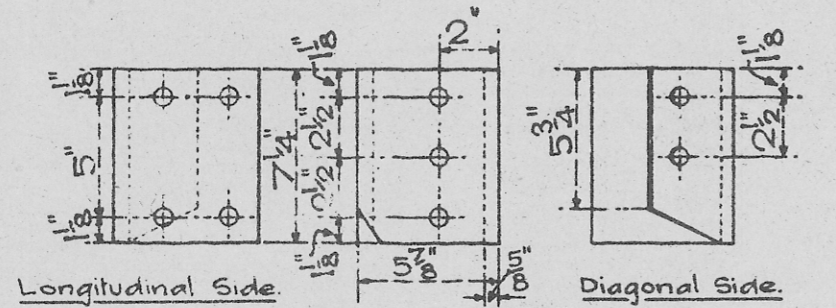
**5 DIAGONAL & TRIMMER KNEE.**

not required with Self Contained Buffer.  
4 per set R.&L. Mild Steel or Gde. B' Iron



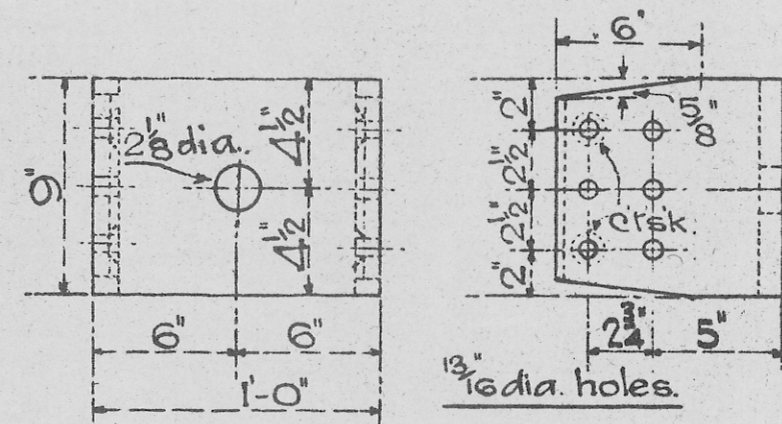
**8 HEADSTOCK & LONGITUDINAL KNEE.**

4 per set. 6" x 3 1/2" x 1/2" L. B.S.U.A. 116.



**9 CROSSBAR, LONGITUDE, & DIAGONAL KNEE.**

4 per set R.&L. Mild Steel or Gde. B' Iron.



**10 DRAWBAR KNEE.**

2 per set. Mild Steel or Gde. B' Iron.

Note:- All Holes to be Drilled.

FOR REMAINING DETAILS SEE THE FOLLOWING DRAWINGS.	
Axleguard	1012/1
Axleguard Stay	1012/2
Drawbar Plate	1012/3
Horse Hook	1012/6
Sole & Trimmer Knee 'B' (ord. Buffers only)	1012/14
Sole & Headstock Knee (ord. Buffers only)	1012/15
Sole & Crossbar Knee	1012/16
Bearing Spring Shoe	1012/17
Bearing Spring Stop	1012/18
Side Door Spring Bracket	1012/19
Sole & Side Rail Bracket	1012/20

**STANDARD 12 & 13-TON MINERAL WAGONS.**

**METAL UNDERFRAME DETAILS.**

SCALE: - 1 1/2 IN. TO 1 FT.

DECEMBER, 1944.

D<sup>c</sup>. No. 1402.